



**Guide Price**

**£450,000**

**Freehold**

2x  2x  1x 

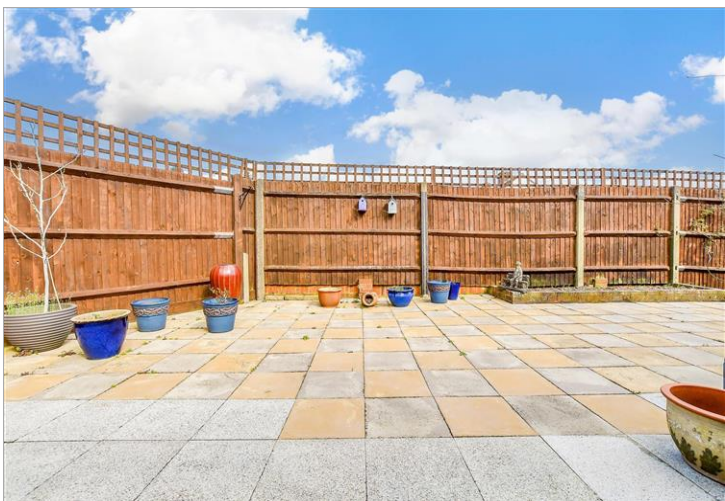
**Orchard Drive,  
Tonbridge, Kent, TN10**

**OVER 60?**

Secure this property  
for up to **59% less!**

*Wards*  
Helping you move forwards





## Main features

- Well presented bungalow located in popular residential area
- Generous corner plot
- Bright and spacious throughout with low maintenance garden and ample parking
- Close to local amenities and transport links

## Accommodation

### GROUND FLOOR

Porch

Lounge/Diner: 24'4 x 13'5 (7.42m x 4.09m)

Kitchen: 11'5 x 9'9 (3.48m x 2.97m)

Conservatory: 17'4 x 11'1 (5.29m x 3.38m)

Bedroom 1: 15'8 x 13'8 (4.78m x 4.17m)

Shower Room: 7'8 x 6'2 (2.34m x 1.88m)

Bedroom 2: 9'5 x 8'5 (2.87m x 2.57m)

Bathroom: 8'7 x 8'7 (2.62m x 2.62m)

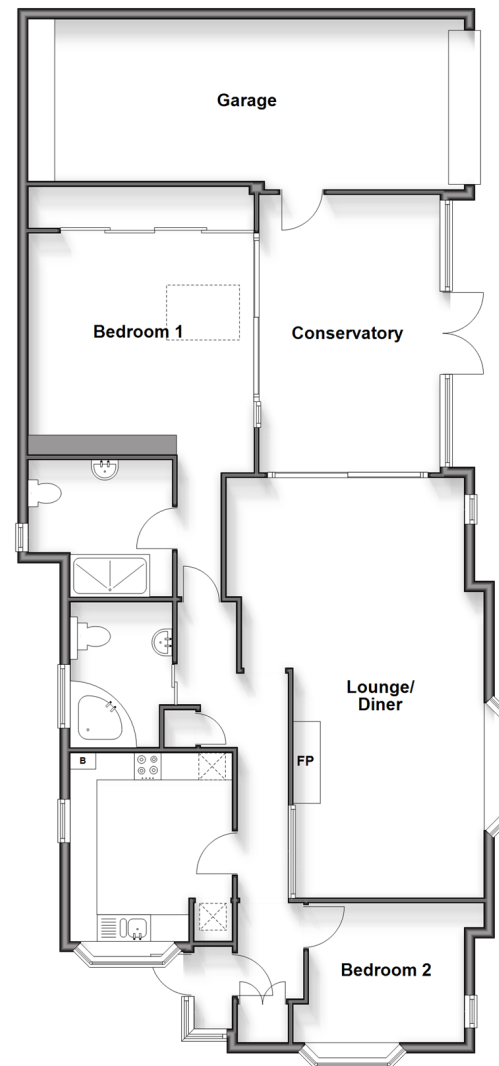
### OUTSIDE

Rear Garden

Garage: 28'6 x 9'5 (8.69m x 2.87m)

Off Road Parking

**Ground Floor**  
Approx. 144.1 sq. metres (1551.6 sq. feet)



**Call Tonbridge - 01732 770755 ■ [wardsofkent.co.uk](http://wardsofkent.co.uk)**

- Legal advice should be taken to verify fixtures/fittings, planning, alterations and/or lease details
- Appliances & services are untested, dimensions are approximate and floor plans are not to scale
- Through a Homewise Home For Life Plan people aged 60+ can secure this property for up to 50% less, by purchasing a Lifetime Lease.



14134173/20250918/NR/NR