



## Kipling Street, SE1

### £450,000

A highly attractive first-floor flat enjoying a sunny westerly aspect, flooding the property with natural light. The accommodation comprises a spacious open-plan living room and kitchen, a generous double bedroom, and a modern three-piece bathroom. Offered to the market chain free, the property also benefits from on-street permit parking.

Perfectly positioned on Kipling Street in the heart of SE1, moments from London Bridge Station. Bermondsey Street's celebrated food scene, galleries & cafés are all close by, while the South Bank offers iconic riverside walks past Borough Market, Tate Modern & numerous cultural landmarks.

### Features

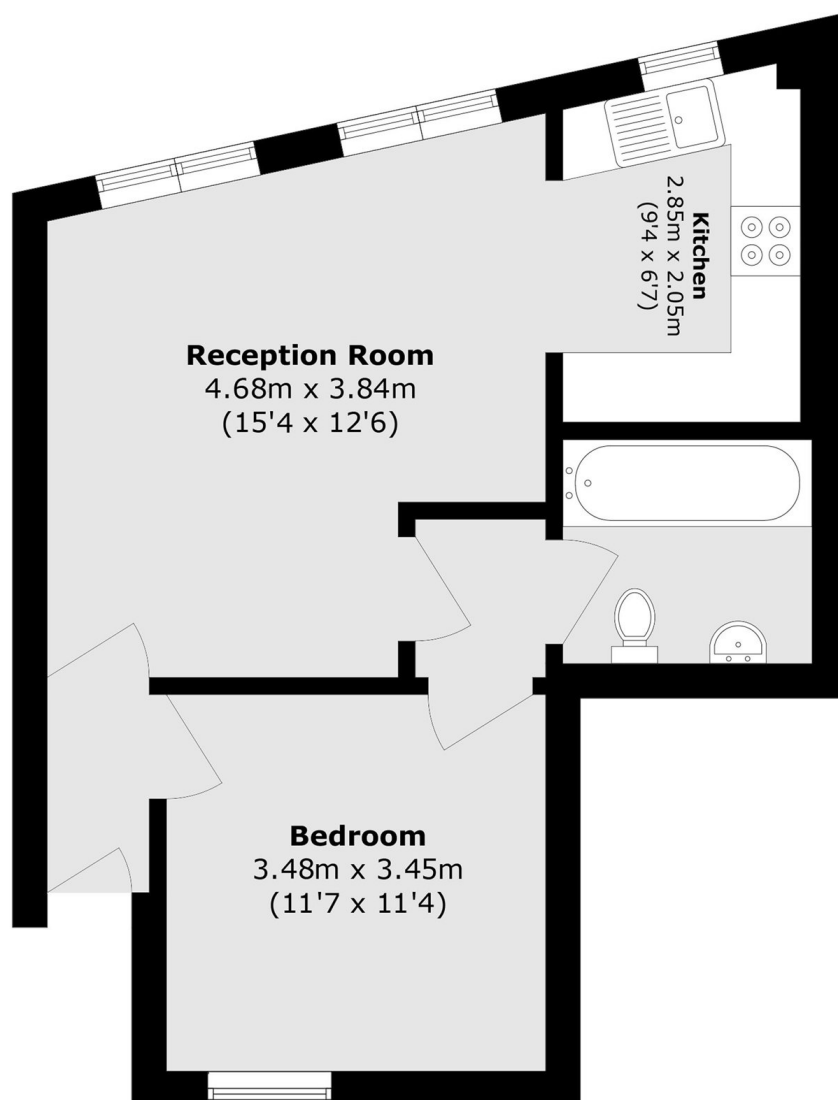
- Open Plan Living Space
- One Double Bedroom
- West-Facing
- On-Street Permit Parking
- Excellent Transport Links
- Chain Free Sale



**Kipling Street, SE1**



# Kipling Street, London, SE1



Total area (approx.): 46.1 sq. m (496.2 sq. ft)