
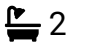

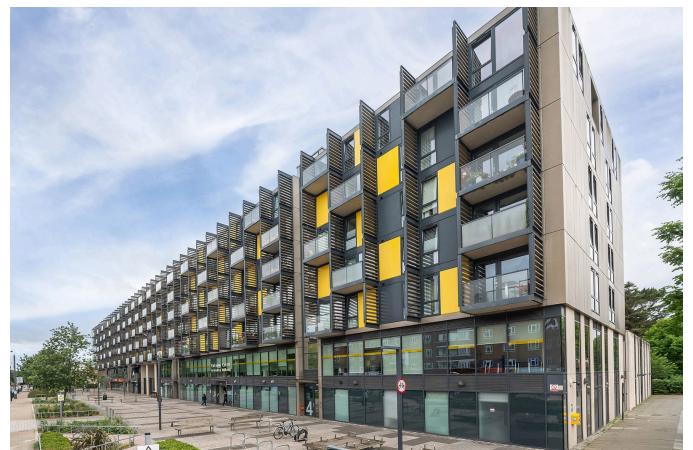


Cranston Court, Shepherd's Bush, W12

Guide Price £500,000 to £550,000

 2  2  1



- Quote MG1175 for all enquiries.
- Guide Price £500,000 - £550,000
- 2 Double Bedrooms
- 2 Bathrooms (1 Ensuite)
- Underground Parking
- West Facing Balcony Overlooking The Park
- 4th Floor
- Concierge Service
- Beautifully refurbished throughout
- Almost 900 sqft

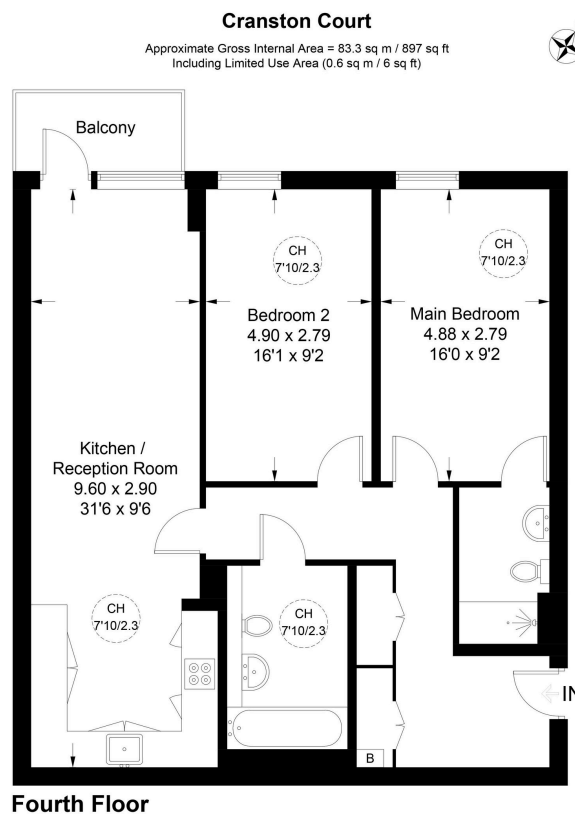


Illustration for identification purposes only, not for valuation purposes, measurements are approximate, not to scale: IPMS2

Measuring almost 900 sq ft, this impressive fourth-floor 2 bedroom, 2 bathroom apartment offers bright, modern living in one of West London's most exciting locations. The spacious open-plan kitchen and reception room opens onto a superb west-facing balcony overlooking the park, creating the perfect space to relax or entertain. Further benefits include concierge service, lift access, secure allocated underground parking and well-maintained communal areas.