



Greenway, Totteridge, N20 8ED

£1,395,000 Freehold

Council Tax Band G

REAL ESTATES
Est. 1981

Estate Agents · Residential Sales · Investments · Lettings

Real Estates are delighted to offer for sale a 4 BEDROOM DETACHED house in this sought after road, conveniently situated for Totteridge & Whetstone Northern Line tube station and multiple shopping facilities at Whetstone High Road. The property is being offered CHAIN FREE.

The spacious accommodation includes 2 reception rooms, fitted kitchen/breakfast area, study, utility room, guest cloakroom and the 1st floor provides 4 bedrooms and two bathrooms. The master bedroom benefits from walk in closet and en-suite shower room.

The rear garden, which extends to approx 100 ft offering fantastic potential to extend further (stpp) and is well secluded. Large driveway to front providing off street parking for a number of cars.

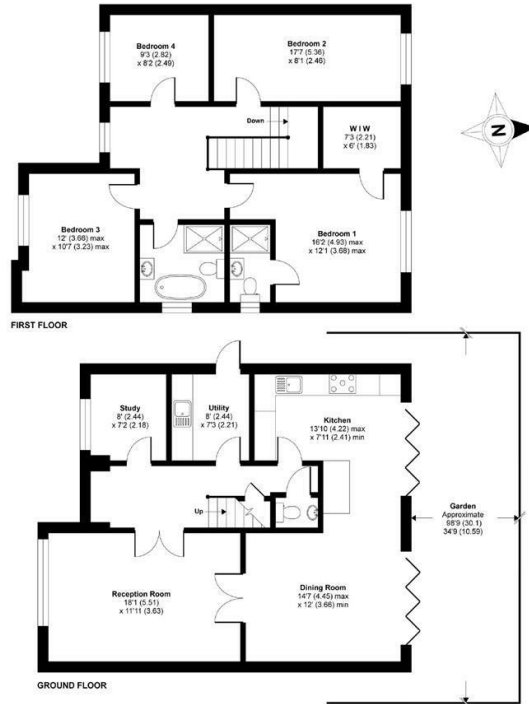
Early viewing highly recommended to avoid disappointment. Sole Agent.





Greenway, London, N20

Approximate Area = 1687 sq ft / 156.7 sq m
For identification only - Not to scale



Certified Property Measurer
Floor plan produced in accordance with RICS Property Measurement Standards incorporating International Property Measurement Standards (IPMS2 Residential). © rics/hcmm 2021. Produced for Real Estate. REF: 798008

Energy Efficiency Rating		Current	Potential
Very energy efficient - lower running costs	A		
B			80
C		66	
D			
E			
F			
G			
Not energy efficient - higher running costs			

EU Directive

