

Property ref: 66962

Skylark House, Drake Way, Reading, RG2 0NX

£1,250 PCM

HASLAM'S
Lettings



A modern one bedroom property apartment situated in the sought after Kennet Island development, within walking distance of Green Park and easily accessible to the M4.
Reading Borough Council tax band C.

Broadband/Mobile Info: Connections available. For an indication of specific speeds and supply of Broadband and Mobile, we advise applicants go to the Ofcom website Broadband and Mobile Coverage Checker.

Available 20/08/2026

- One double bedroom; Electric heating
- Allocated parking; Large terrace
- Close links to the A329 and M4; EPC rating B
- Open living room/kitchen area
- Walking distance to local amenities and bus routes
- Furnished; Managed by HASLAM'S

*Fees For Assured Periodic Tenancies: when you rent a property from us you will be required to pay a sum equivalent to one weeks' rent for a holding deposit. Upon successful application, this amount will be off set against your first months' rent. You will also be required to pay a security deposit equivalent to 5 weeks' rent which will be held and protected in line with Deposit legislation. For more information about our fees please visit: www.haslams.net
Fees for all other tenancies (Non Housing Act Tenancies / Company Lets): when you rent a property from us we will charge you a one-off fee per property. This charge is the equivalent of 15 days of the monthly rental charge (+VAT) with a minimum fee of £450 (inc.VAT) up to a maximum of £650 (inc.VAT). Other fees may apply depending on your circumstances.

0118 960 1055

lettings@haslams.net www.haslams.net

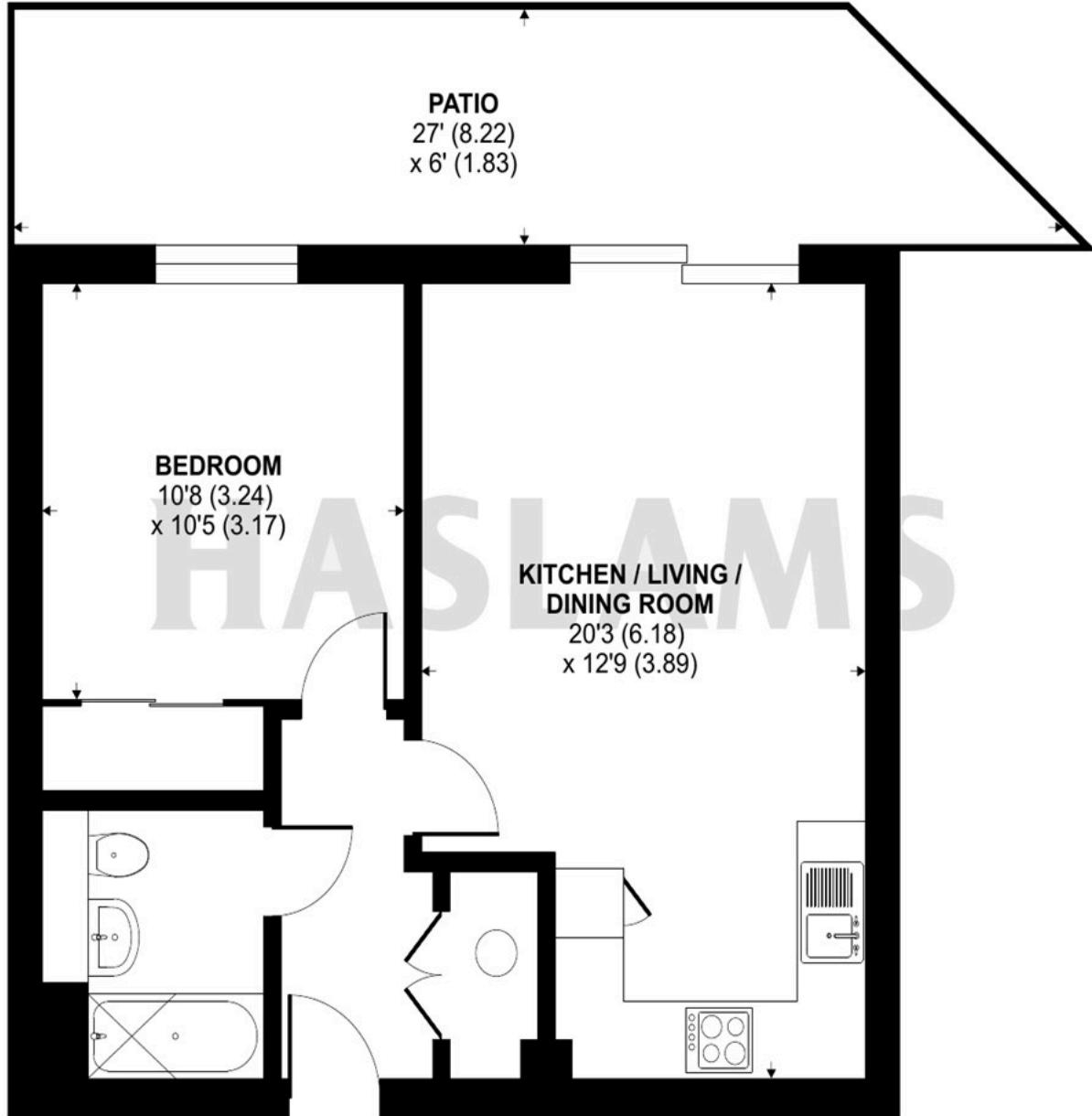
Haslams Estate Agents Ltd, 159 Friar Street, Reading, Berkshire, RG1 1HE



Drake Way, Reading, RG2

Approximate Area = 480 sq ft / 44.5 sq m

For identification only - Not to scale



FIRST FLOOR

 Floor plan produced in accordance with RICS Property Measurement 2nd Edition, Incorporating International Property Measurement Standards (IPMS2 Residential). © nchecon 2026. Produced for Haslams. REF: 1410889