

Surbiton Road, Hartburn



£150,000

IH INGLEBY HOMES





Deceptively spacious, this three bedroom property certainly demands internal inspection to be fully appreciated.

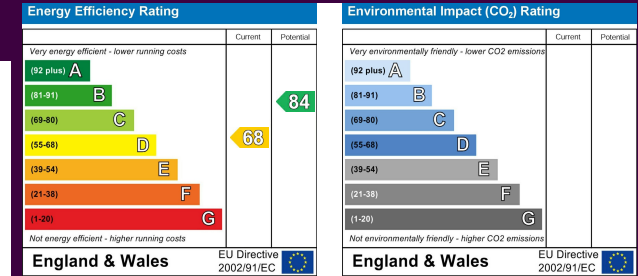
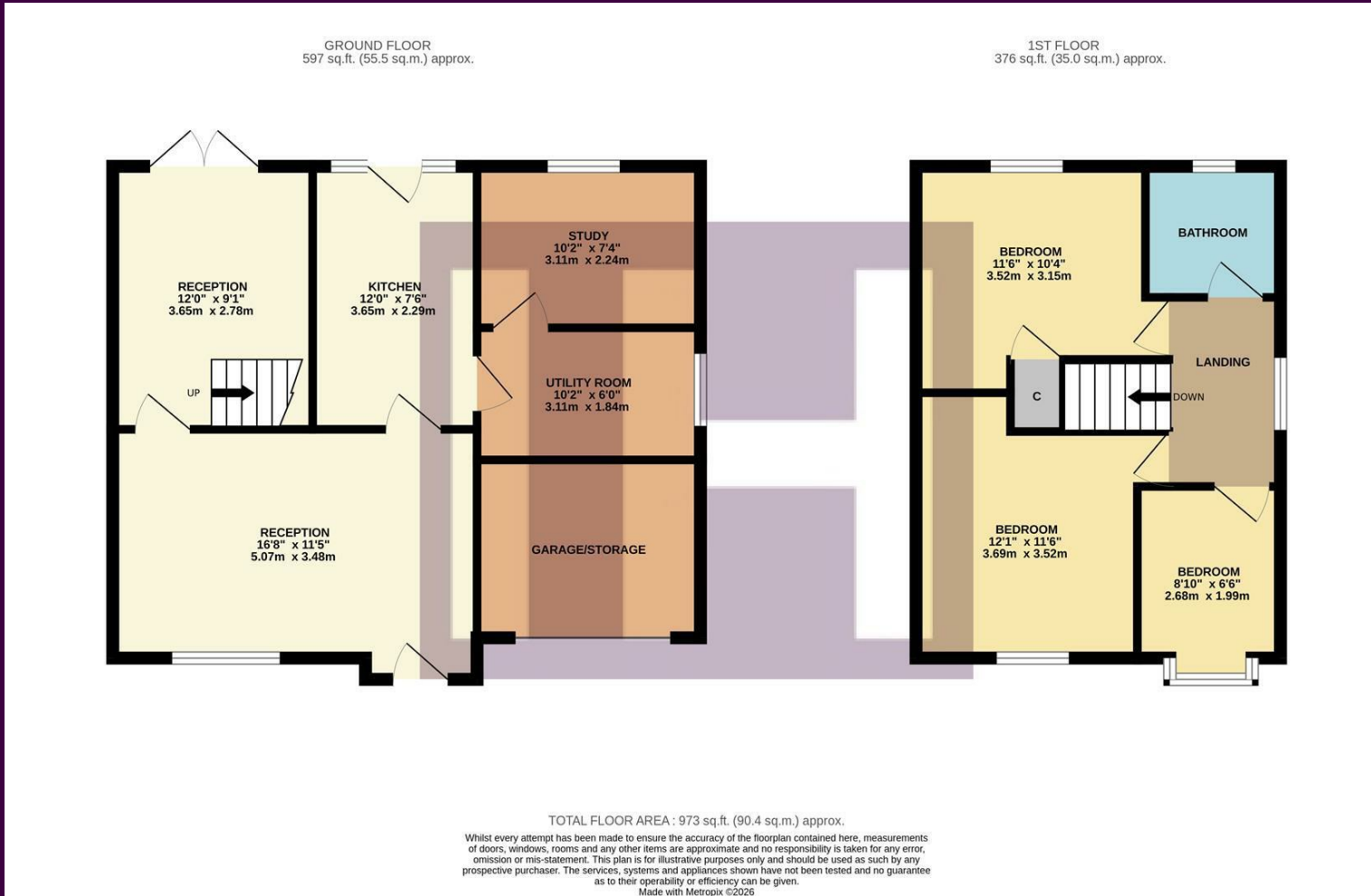
Situated within this popular residential area, with highly regarded local schooling, excellent transport links and amenities, this attractive property is sure to prove popular with many.

Enjoying a ground floor that brings a spacious main reception room, a further dining room, and modern kitchen, along with a study and utility space provided by way of a garage separation on the ground floor. The first floor provides three bedrooms and the family bathroom.



The rear garden is fully enclosed, bringing a decked area and lawn, whilst the front is laid to concrete imprint allowing off-road parking, with a section of the front of the garage remaining.

The Layout



The Location



Council Tax Band:
Tenure:

B
Freehold



- For Sale as part of a Taylor Wimpey Part Exchange
- Favoured location
- Deceptively spacious and attractive throughout
- Separate lounge, dining room and modern kitchen
- Three first floor bedrooms
- Enclosed rear garden, concrete imprint front drive
- Ideal first purchase