



**homeworks**  
estate agent



54 Swaffham Road  
Dereham, NR19 2DL

☎ (01362) 65 44 44  
✉ sales@homeworks-uk.com  
🌐 www.homeworks-uk.com

Podmore Lane, Scarning, Dereham, NR19 2NS

£575,000

3 2 5

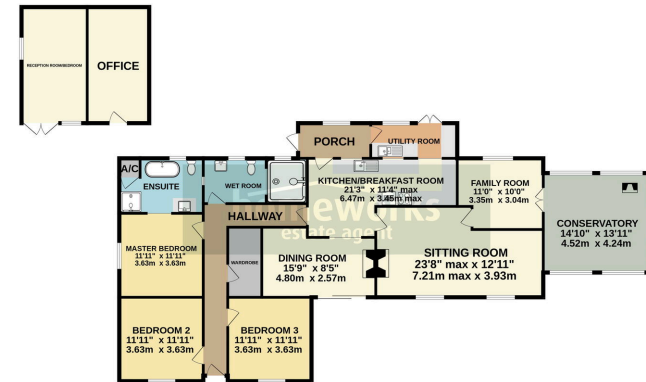


- **\*\* RARELY AVAILABLE LOCATION \*\***
- **21'3 KITCHEN/BREAKFAST ROOM WITH SEPARATE UTILITY**
- **15'9 DINING ROOM & SEPARATE 11' FAMILY ROOM**
- **RE-FITTED WET ROOM & EN-SUITE TO MASTER BEDROOM**
- **AMPLE OFF ROAD PARKING**
- **DETACHED BUNGALOW WITH THREE DOUBLE BEDROOMS**
- **FANTASTIC 23'8 SITTING ROOM WITH DOUBLE ASPECT WOOD BURNER**
- **14'10 CONSERVATORY WITH WOOD BURNER**
- **AMAZING PLOT OCCUPYING APPROXIMATELY 0.46 ACRES (STMS)**
- **PLAYROOM/OFFICE WITH POTENTIAL TO CONVERT**



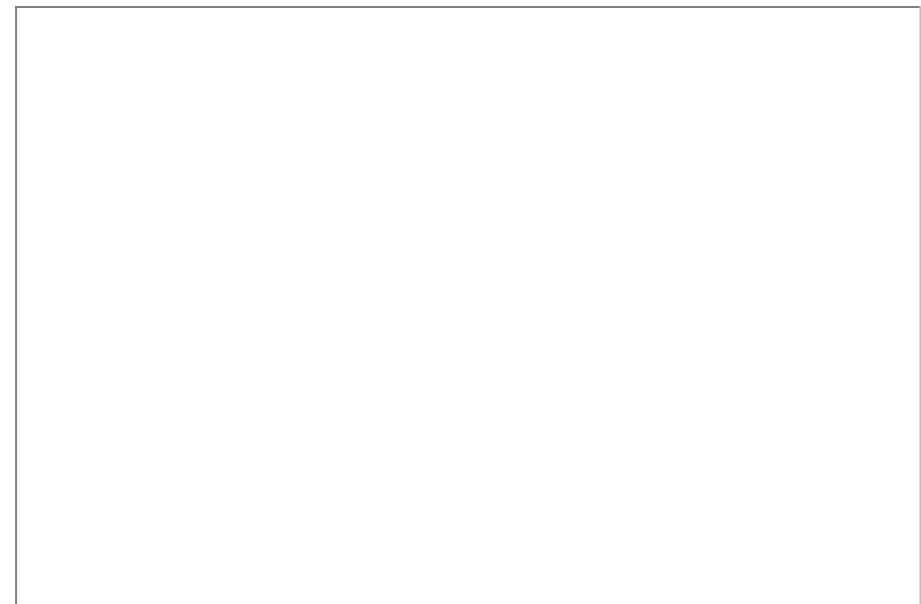


GROUND FLOOR



While every effort has been made to ensure the accuracy of the floorplan contained here, measurements of floor, window, rooms and any other items are approximate and no responsibility is taken for any errors, omissions or mis-statements. This plan is for illustrative purposes only and should be used as a guide only for prospective purchasers. The services, fixtures and fittings shown here are not intended and no guarantee as to their operability or efficiency can be given. Mark with reference 0200.

**\*\* RARELY AVAILABLE LOCATION \*\* DETACHED BUNGALOW WITH THREE DOUBLE BEDROOMS | 21'3 KITCHEN/BREAKFAST ROOM WITH SEPARATE UTILITY | FANTASTIC 23'8 SITTING ROOM WITH DOUBLE ASPECT WOOD BURNER | 15'9 DINING ROOM & SEPARATE 11' FAMILY ROOM | 14'10 CONSERVATORY WITH WOOD BURNER | RE-FITTED WET ROOM & EN-SUITE TO MASTER BEDROOM | AMAZING PLOT OCCUPYING APPROXIMATELY 0.46 ACRES (STMS) | AMPLE OFF ROAD PARKING | PLAYROOM/OFFICE WITH POTENTIAL TO CONVERT**



C AMOS MNAEA Managing Director  
VAT no. 185 328 683

