



## SCHOOL HOUSE YARD, SE18

£400,000

Apartment  
Two bedrooms  
Victorian  
Gated community  
Allocated parking  
Energy rating: C

@marshandparsons  
marshandparsons.co.uk

MARSH &  
PARSONS



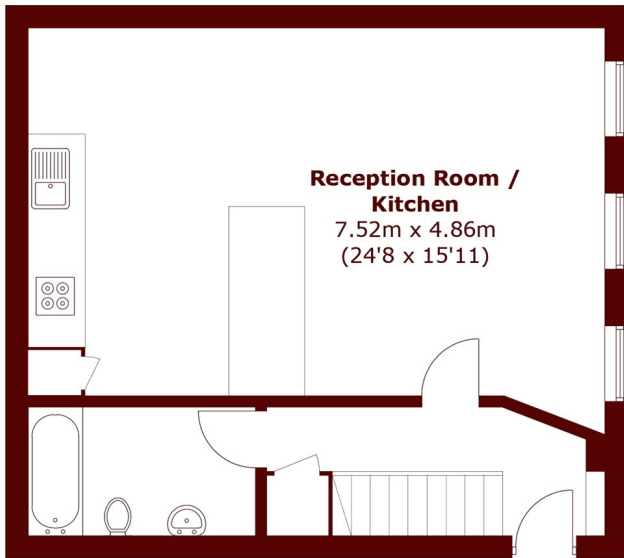
# ABOUT THE PROPERTY

Set in a converted Victorian school, this stylish two bedroom split-level apartment offers high ceilings and large windows. It features an open plan kitchen and living area with ample storage, a modern three-piece bathroom, and two double bedrooms upstairs. Located in the sought-after Schoolhouse Yard in Woolwich, the home provides security in a gated community, and includes allocated parking.

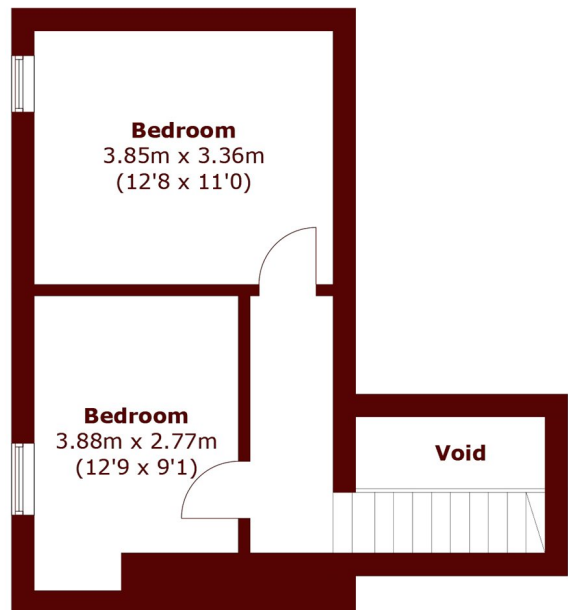
Approximately a 10 to 15 minute walk from Woolwich Arsenal station, which provides Elizabeth line, DLR, and National Rail services, with several bus stops just a few minutes away on Plumstead Common Road.



# STEP INSIDE SCHOOL HOUSE YARD



**First Floor**



**Second Floor**

Total area (approx.): 81.2 sq. m (875.1 sq. ft)  
(Excluding Void)

**Charlton**  
020 8293 0454

Energy Rating: C We aim to make our particulars both accurate and reliable. However, they are not guaranteed; nor do they form part of an offer or contract. If you require clarification on any points then please contact us, especially if you're traveling some distance to view. Please note that appliances and heating systems have not been tested and therefore no warranties can be given as to their good working order

**MARSH &  
PARSONS**