



50 Swithin Lane, Buckingham, MK18 1ZJ
Offers in excess of £200,000

Entrance Hall

Stairs leading to upper floor, storage

Open Plan Living/Kitchen/Dining Room 25'11" x 16'8" (7.9 x 5.1)

Integrated stainless steel single drainer sink unit, cupboard under, further range of base, drawer and eyelevel units, rolled edge work tops, integrated single electric oven, four burner gas hob, extractor hood over, integrated fridge freezer, washer/dryer, dishwasher, cupboard housing 'Logic' gas fired boiler, Upvc double glazed window to rear aspect, radiator, corner storage cupboard.

Bedroom 12'9" x 9'6" (3.9 x 2.9)

Double glazed window, carpet flooring, radiator

Bedroom 8'10" x 11'1" (2.7 x 3.4)

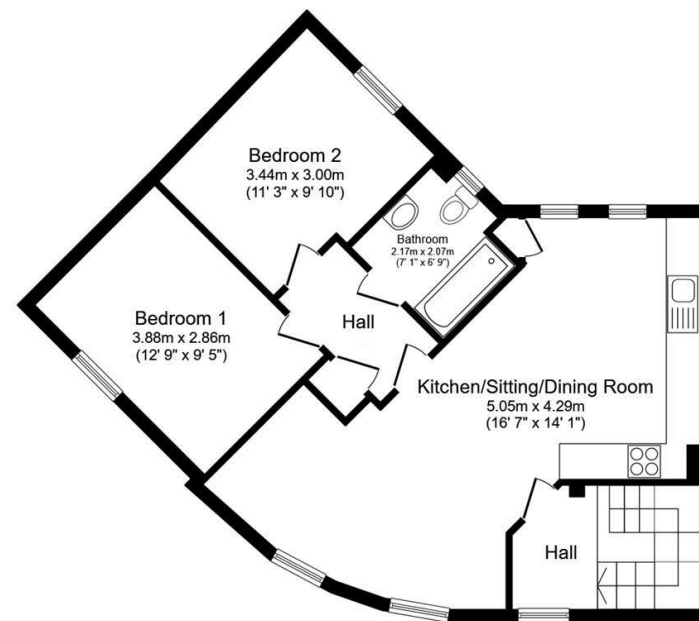
Double glazed window, carpet flooring, radiator

Bathroom

Matching white bathroom suite with tiled surrounds

Outside

Allocated parking space and access to two visitor parking spaces.



Floor Plan

Floor area 69.8 sq.m. (752 sq.ft.)

Total floor area: 69.8 sq.m. (752 sq.ft.)

This floor plan is for illustrative purposes only. It is not drawn to scale. Any measurements, floor areas (including any total floor area), openings and orientations are approximate. No details are guaranteed, they cannot be relied upon for any purpose and do not form any part of any agreement. No liability is taken for any error, omission or misstatement. A party must rely upon its own inspection(s). Powered by www.Propertybox.io