



10 Jackman Close, Abingdon OX14 3GA



10 Jackman Close

Stunning and very stylish three-bedroom, three-storey town house offering superbly presented accommodation over three floors, close to the thriving town centre's many amenities

10 Jackman Close forms part of a small, select development of similar stylish town houses providing a very pleasant cul-de-sac location combined with easy pedestrian access to the thriving town centre's wide range of facilities. There is a quick route onto the A34 leading to many important destinations north and south. Useful distances include Oxford City (circa. 8 miles) and Didcot town (circa. 10 miles) with its useful mainline railway station to London Paddington.

Bedrooms: 3

Bathrooms: 2

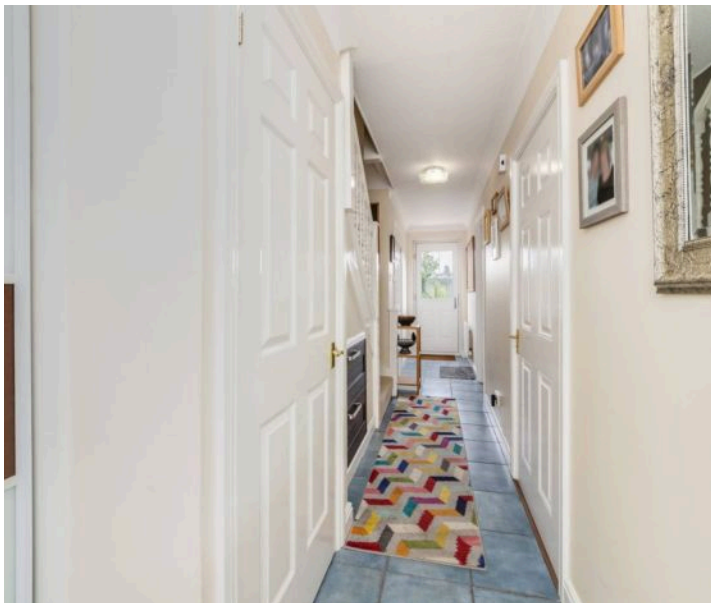
Reception Rooms: 2

Council Tax Band: E

Tenure: Freehold

EPC: C





Key Features

- Inviting entrance hall leading to tall coat cupboard, separate utility cupboard, cloakroom and very flexible ground floor third bedroom/study overlooking the rear gardens
- Stairs rising to first floor (fitted with efficient understairs storage cupboards) to wonderful and very spacious sitting room with bay window, open plan to dining area
- Stylish John Lewis refitted kitchen offering an excellent selection of contemporary floor and wall units complemented by many built-in electrical appliances
- Kitchen features include Maia composite working surfaces, Cameo glass splash backs, and attractive open views over the school playing fields
- Large principal top floor double bedroom with an extensive selection of fitted Hammonds bedroom furniture and en-suite shower room
- Second large top double bedroom with further selection of fitted Hammonds bedroom furniture and double opening windows leading to Juliet balcony complemented by bathroom with contemporary white suite
- Outside the front gardens provide hard standing parking facilities leading to integral garage
- Beautifully landscaped and fully enclosed rear gardens leading to delightful summerhouse/garden store with light & power - the whole enclosed by hedgerow and fencing
- Features include mains gas radiator central heating, double glazed windows and fitted water softener









BRITISH
PROPERTY
AWARDS
2024

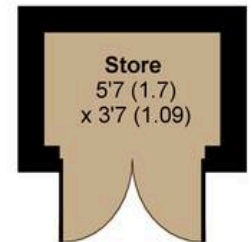
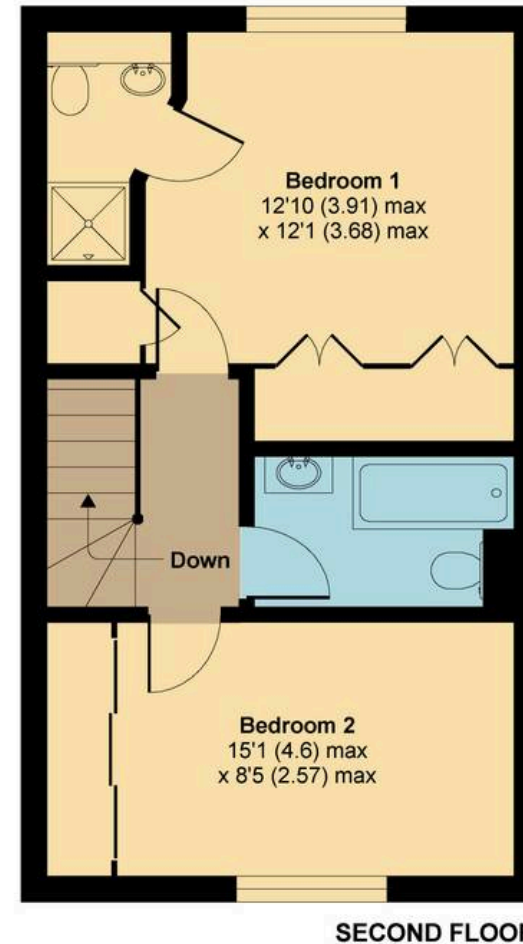
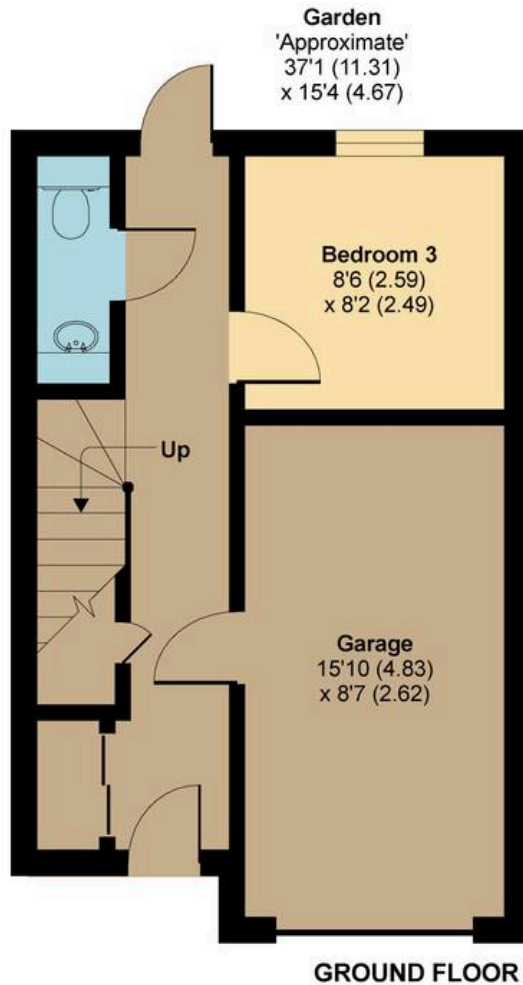
GOLD WINNER

ESTATE AGENT
IN ABINGDON

Hodsons
...your move. our passion



Introducing the Hodsons team...
...trust in our experience!



Jackman Close, Abingdon, OX14

MAIN HOUSE APPROX. GROSS INTERNAL FLOOR AREA 1036 SQ FT 96.2 SQ METRES
 GARAGE APPROX. GROSS INTERNAL FLOOR AREA 132 SQ FT 12.3 SQ METRES
 OUTBUILDINGS APPROX. GROSS INTERNAL FLOOR AREA 21 SQ FT 2 SQ METRES
 TOTAL APPROX. GROSS INTERNAL FLOOR AREA 1189 SQ FT 110.5 SQ METRES

Whilst every attempt has been made to ensure the accuracy of the floor plan contained here, measurements of doors, windows and rooms are approximate and no responsibility is taken for any error, omission or misstatement. These plans are for representation purposes only as defined by RICS Code of Measuring Practice and should be used as such by any prospective purchaser. Specifically no guarantee is given on the total square footage of the property if quoted on this plan. Any figure given is for initial guidance only and should not be relied on as a basis of valuation.

Copyright nichecom.co.uk 2017 Produced for Hodsons REF : 182952



5 Ock Street, Abingdon,
Oxfordshire, OX14 5AL
T: 01235 553686
E: abingdon@hodsons.co.uk
www.hodsons.co.uk