



The Hermitage

Richmond, TW10

£3,033 per month
(£699.92 per week)

CHESTERTONS



The Hermitage

Richmond, TW10

- One Double Bedroom
- Modern Fitted Kitchen
- Light and airy reception room
- Modern Fitted Bathroom
- Central Richmond location
- Moments from the River Thames



(SHORT-LET) Nestled in the heart of the bustling town of Richmond, this charming upper floor period apartment offers a perfect blend of historic charm and modern convenience. Featuring one spacious bedroom, this fully furnished property is ideal for individuals or couples seeking a stylish urban retreat.

The apartment boasts a bright and airy living space, complete with large windows that flood the rooms with natural light. The well-equipped kitchen provides a perfect setting for whipping up delicious meals, while the cosy bedroom offers a peaceful sanctuary for rest and relaxation.

Conveniently located within walking distance of local amenities, shops, and transport links, this property offers the best of both worlds - a tranquil living space in a vibrant urban setting. ALL BILLS INCLUDED

Stylish one double bedroom flat located on the top floor of this imposing period house. Accommodation briefly comprises; a light and airy reception room which leads onto a modern fitted kitchen ideal for entertaining, a spacious double bedroom and modern fitted bathroom. Located on The Hermitage, this property is ideally located moments from Richmond town centre and train station and also a short walk from River Thames. Available mid-July. EPC = E

Minimum Term: 12 months
Deposit Required: 5 weeks
Local Authority: London Borough of Richmond upon Thames
Council Tax Band:
EPC Rating: E
Furnished

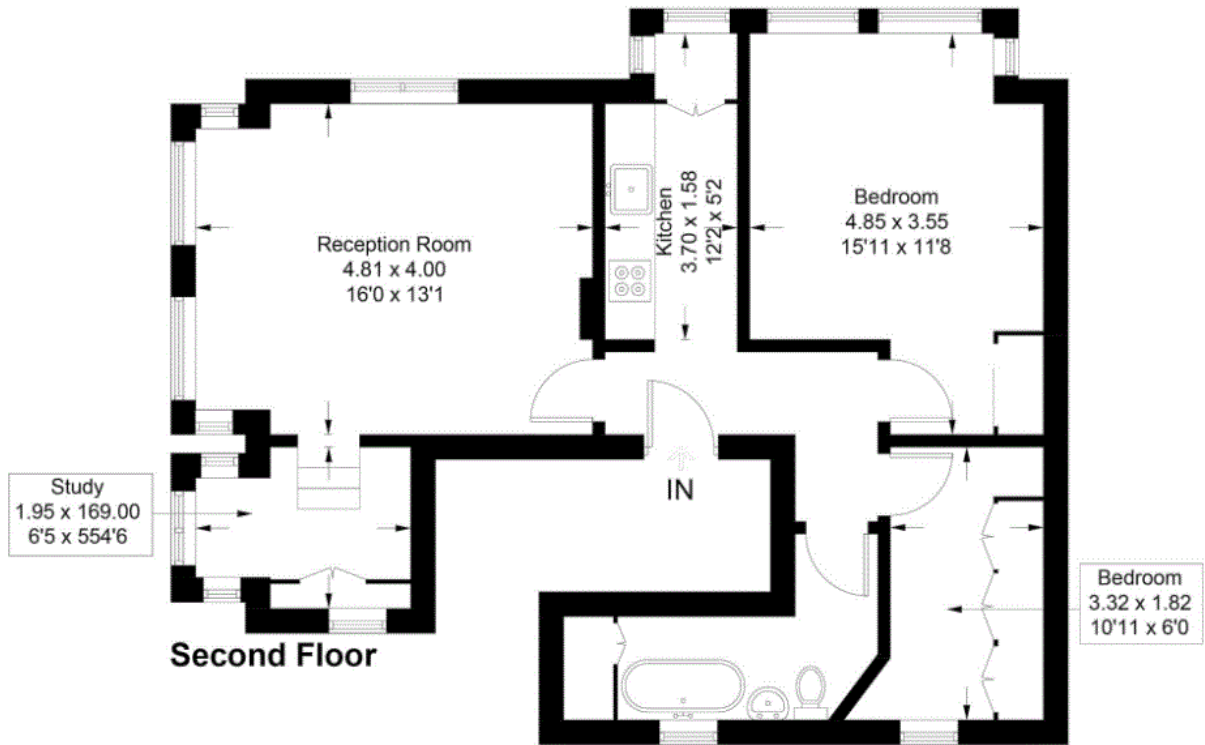
Score	Energy rating	Current	Potential
92+	A		
81-91	B		
69-80	C		
55-68	D		
39-54	E	◀	▶
21-38	F		
1-20	G		

Chestertons Richmond Lettings

23a Friars Stile Road
 Richmond
 Surrey
 TW10 6NH
 richmondlettingsusers@chestertons.co.uk
 02037583333
 chestertons.co.uk

St. Kilda

Approximate Gross Internal Area = 62.6 sq m / 674 sq ft



Featherstone Leigh Residential Ltd

Every attempt is made to assure accuracy, however measurements are approximate and for illustrative purposes only. Not to scale. (ID1190309)

