



Flat 2 112 Petherton Road, London, N5 2RT

£450,000

Flat 2 112 Petherton Road, London N5 2RT

Alwyne Estates are delighted to present you this well-presented one-bedroom flat located in a premier Highbury location.

The property features a spacious open-plan living and kitchen area, a bright double bedroom with built-in wardrobes, and a modern bathroom, offering comfortable and practical living throughout.

Ideally positioned, the flat is within easy reach of excellent transport links and the vibrant amenities of Newington Green. Canonbury Station is less than a 10-minute walk away, while the open green spaces of Clissold Park are right on your doorstep.

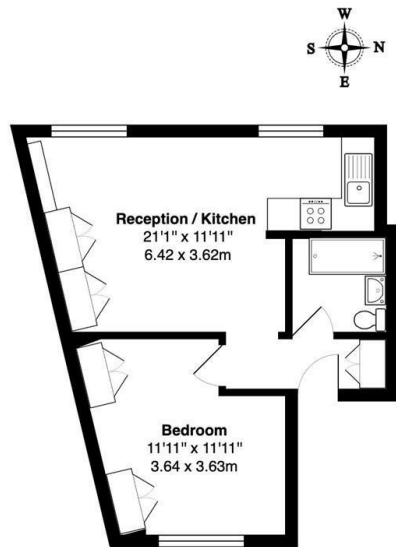
A fantastic opportunity for first-time buyers or investors alike.

Tenure: Leasehold - 146 years remaining



Council Tax Band: C

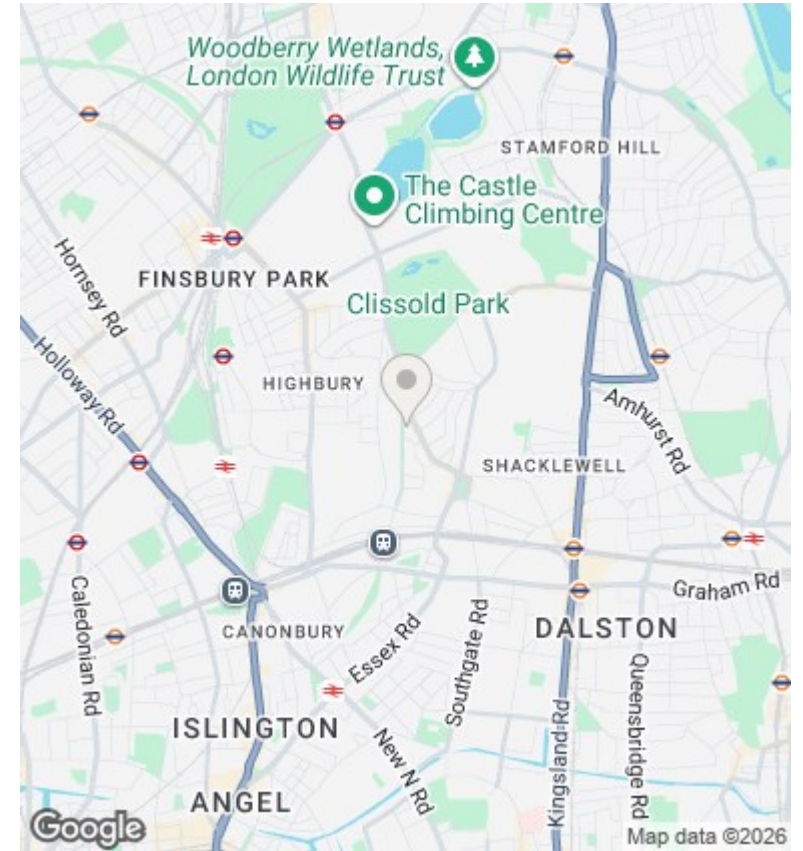




2nd Floor
Petherton Road N5

Total Gross Area: 405 ft² ... 37.6 m²

All measurements are approximate and for identification guideline purposes only, not to scale.
 Compliant with the RICS code of measuring practice



Directions

Viewings

Viewings by arrangement only. Call 02073593191 to make an appointment.

Council Tax Band

C

Energy Efficiency Rating		Current	Potential
Very energy efficient - lower running costs			
(92 plus) A			
(81-91) B			
(69-80) C		76	80
(55-68) D			
(39-54) E			
(21-38) F			
(1-20) G			
Not energy efficient - higher running costs			
England & Wales	EU Directive 2002/91/EC		

Full description

Second floor one bedroom flat set in a premier location in Highbury. The property comprises one bright double bedroom with built-in wardrobes and a modern bathroom. The property is available from 6th April



