



Price

£380,000

Freehold

3x  2x  2x 

Crescent Way, Chatham,
Kent, ME5

OVER 60?

Secure this property
for up to **59% less!**

Wards
Helping you move forwards



Main features

- **Extended semi-detached house in popular residential area**
- **Perfect for entertaining, with large kitchen/dining/family area**
- **Versatile layout with bedroom and 2nd bathroom on ground floor**
- **Brilliant location for a choice of local schools and shops within walking distance**
- **Excellent choice for a young family or a professional couple**

Accommodation

GROUND FLOOR

Entrance Hallway
 Lounge: 14'0 x 9'9 (4.27m x 2.97m)
 Kitchen Area: 16'4 x 8'2 (4.98m x 2.49m)
 Dining/Family Area: 22'4 x 11'11 (6.81m x 3.63m)
 Bedroom 3/Study: 10'6 x 6'8 (3.20m x 2.03m)
 Utility Room: 4'9 x 4'0 (1.45m x 1.22m)
 Shower Room

FIRST FLOOR

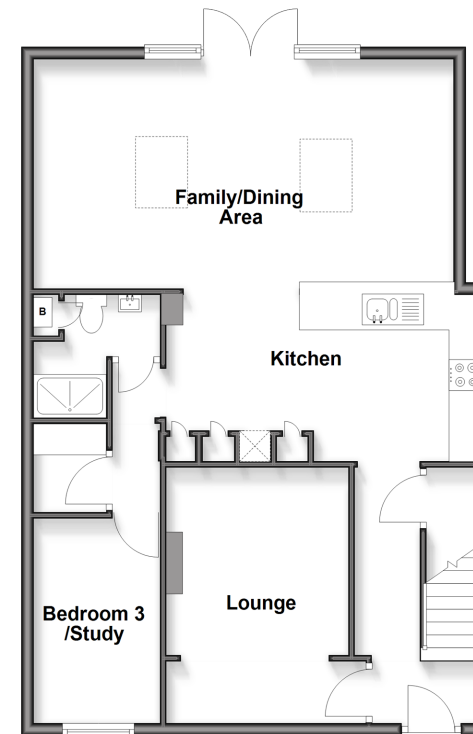
Landing
 Bedroom 1: 13'4 x 9'10 (4.07m x 3.00m)
 Bedroom 2: 9'9 x 8'6 (2.97m x 2.59m)
 Bathroom

OUTSIDE

Driveway
 Rear Garden

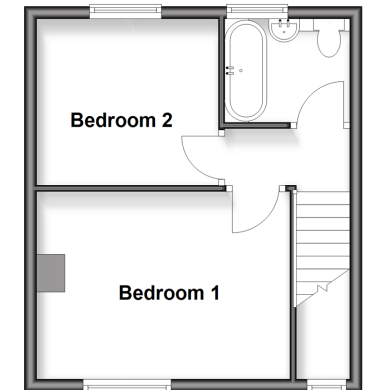
Ground Floor

Approx. 76.2 sq. metres (819.7 sq. feet)



First Floor

Approx. 29.6 sq. metres (318.9 sq. feet)



Call Chatham - 01634 841243 ■ wardsofkent.co.uk

■ Through a Homewise Home For Life Plan people aged 60+ can secure this property for up to 59% less, by purchasing a Lifetime Lease



10432675/20260429/BC/BC