



CABLE WALK, SE10

£335,000

Modern apartment
One bedroom
Private balcony
24-hour concierge
Close to stations
Energy rating: b

@marshandparsons
marshandparsons.co.uk

MARSH &
PARSONS



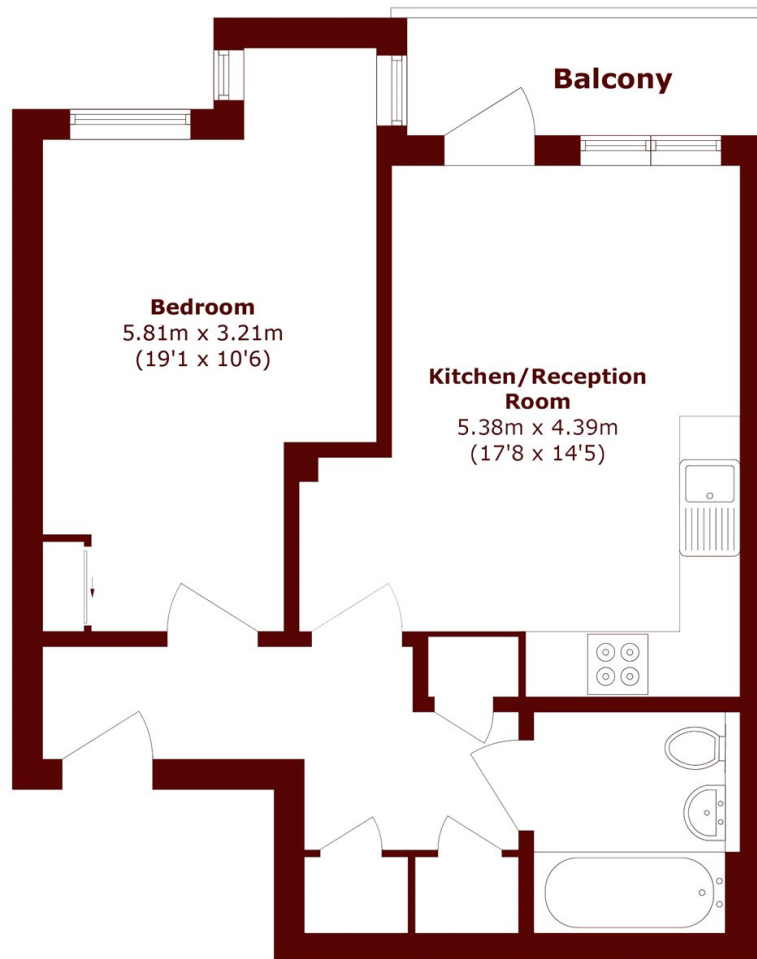
ABOUT THE PROPERTY

A first floor modern apartment, nestled away in a very private location sharing a communal entrance with only one other apartment. Residents have exclusive access to the on-site gym and a 24-hour concierge. Inside this modern home, you will find an open plan kitchen and lounge/diner offering direct access to a mostly enclosed private balcony, overlooking the courtyard. Large bedroom benefitting from a tall fitted wardrobe, a perfect work from home space and a modern bathroom suite.

North Greenwich tube station and Maze Hill mainline station is within walking distance. Greenwich town centre including the royal park and the covered market are close by.



STEP INSIDE CABLE WALK



Total area (approx.): 50.4 sq. m (542.5 sq. ft)

Balcony area (approx.): 4.0 sq. m (43.0 sq. ft)

Greenwich
020 8312 8312

Energy Rating: C We aim to make our particulars both accurate and reliable. However, they are not guaranteed; nor do they form part of an offer or contract. If you require clarification on any points then please contact us, especially if you're traveling some distance to view. Please note that appliances and heating systems have not been tested and therefore no warranties can be given as to their good working order

**MARSH &
PARSONS**