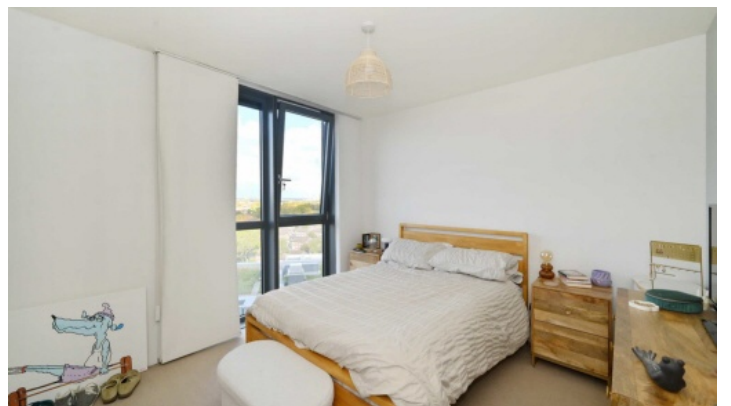




PROPERTY EXPERTS  
SINCE 1989



## HOMERTON ROAD, E9

£315,000

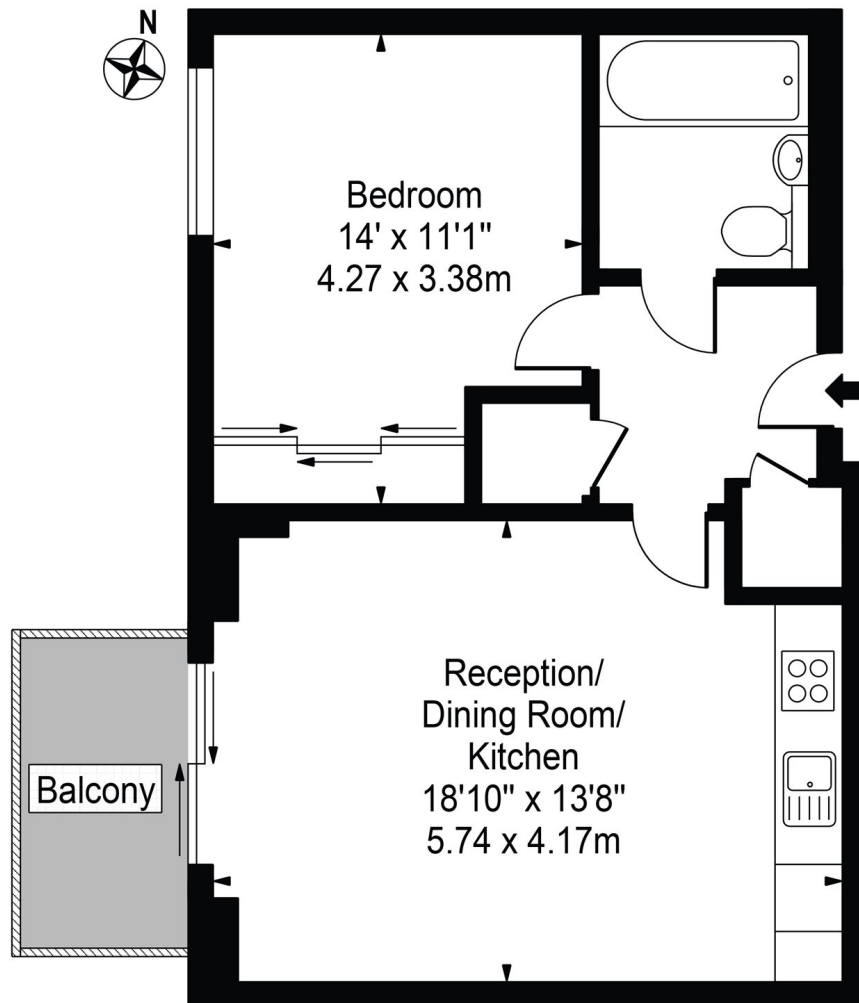
This modern one bedroom offers impressive views across the city skyline. The property features a bright open plan living and kitchen area with floor-to-ceiling windows, a double bedroom and a contemporary bathroom. Residents benefit from a concierge service, residential gym, secure entry system, and lift access.

- Modern
- Open Plan
- Concierge
- Private Balcony
- Gym & Roof Terrace
- Hackney Wick Station



## Sky Apartments

Approx. Gross Internal Area 516 Sq Ft - 47.91 Sq M



## Twelfth Floor

For Illustration Purposes Only - Not To Scale

This floor plan should be used as a general outline for guidance only and does not constitute in whole or in part an offer or contract. Any intending purchaser or lessee should satisfy themselves by inspection, searches, enquiries and full survey as to the correctness of each statement. Any areas, measurements or distances quoted are approximate and should not be used to value a property or be the basis of any sale or let.

### SOVEREIGN HOUSE

213 Victoria Park Road,  
London, E9 7HD  
020 8985 5800

Energy Rating: C We aim to make our particulars both accurate and reliable. However they are not guaranteed; nor do they form part of an offer or contract. If you require clarification on any points then please contact us, especially if you're traveling some distance to view. Please note that appliances and heating systems have not been tested and therefore no warranties can be given as to their good working order.