



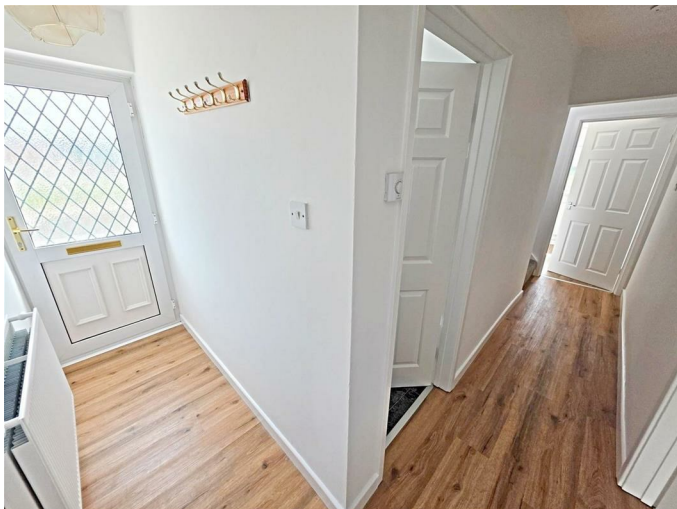
2 Elm Grove, Pontypridd, CF37 3AN
£900 Per Calendar Month

**** Quality refurbishment ** Spacious & well presented ** Three double bedrooms ****
Available now and early viewing strongly recommended.

A refurbished, semi detached property offering excellent size accommodation and is ready to move in to. Comprising of entrance hall, shower room/WC, study, lounge, living/dining room, modern kitchen with oven & hob, three double bedrooms and first floor bathroom/WC.

There are gardens to the front and rear together with a gated driveway for off road parking.
Recommended.

Entrance Hall



Lounge 13'11" x 10'8" (4.25 x 3.25)



Living/Dining Room 21'4" x 10'8" (6.51 x 3.24)



Shower Room/WC



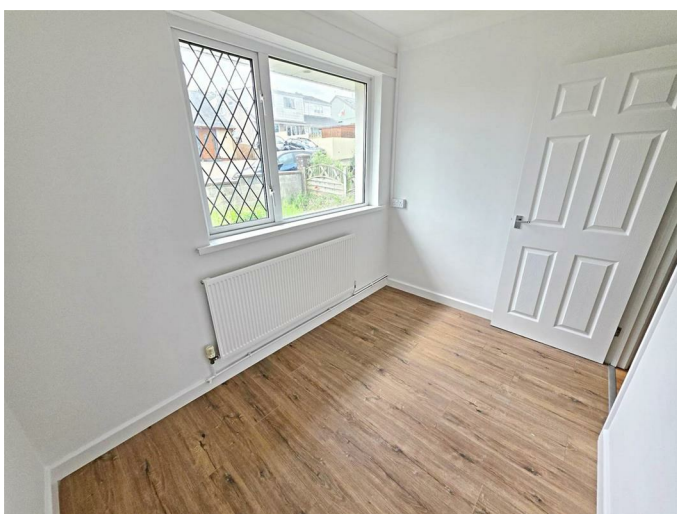
Kitchen 12'5" x 9'7" (3.78 x 2.92)



First Floor Landing



Study 9'8" x 6'7" (2.94 x 2.00)



Bedroom 1 13'2" x 9'5" (4.02 x 2.87)



Bathroom/WC



Bedroom 2 17'0" x 9'5" (5.17 x 2.88)



Gardens & Parking

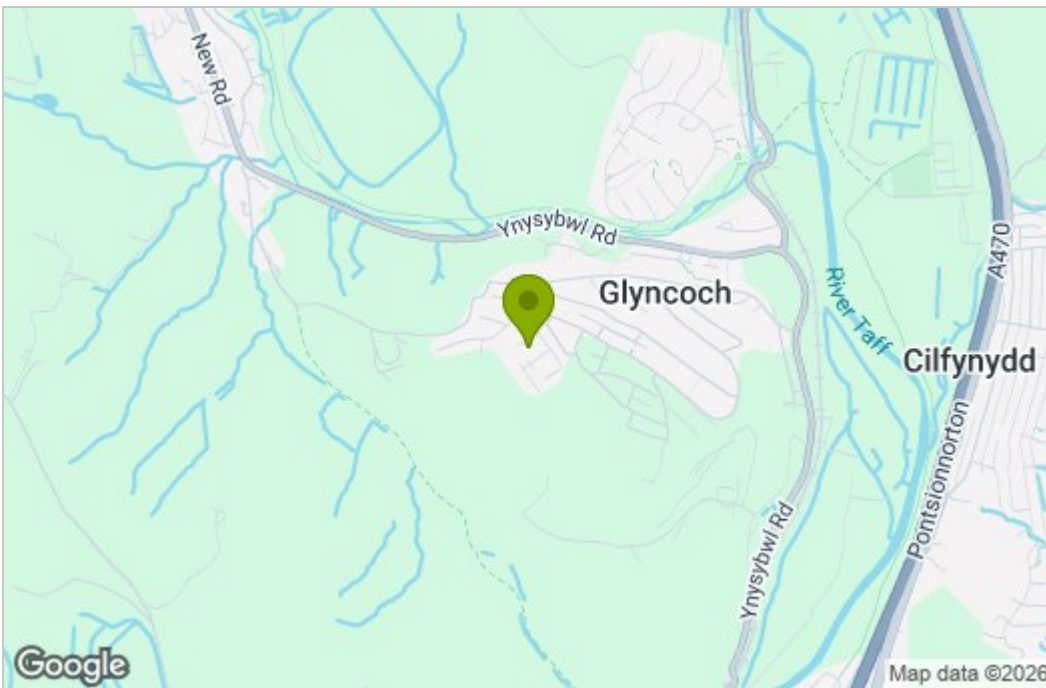


Bedroom 3 13'1" x 9'5" (3.98 x 2.88)

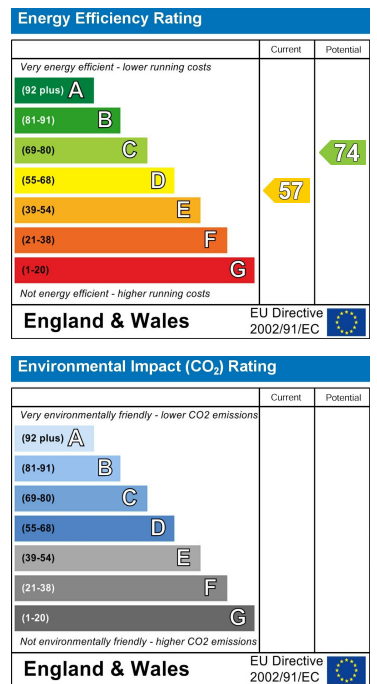


Floor Plan

Area Map



Energy Efficiency Graph



These particulars, whilst believed to be accurate are set out as a general outline only for guidance and do not constitute any part of an offer or contract. Intending purchasers should not rely on them as statements of representation of fact, but must satisfy themselves by inspection or otherwise as to their accuracy. No person in this firm's employment has the authority to make or give any representation or warranty in respect of the property.

22 Market Street, Pontypridd, CF37 2ST

Tel: 01443 404093 Email: pontypridd@hoskinsjohnson.co.uk www.hoskinsjohnson.co.uk