

# JAMES EDWARD

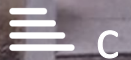
Comprehensively Cared For



Grosvenor Avenue

, London, N5 2NH

£850,000



# Grosvenor Avenue



## Description

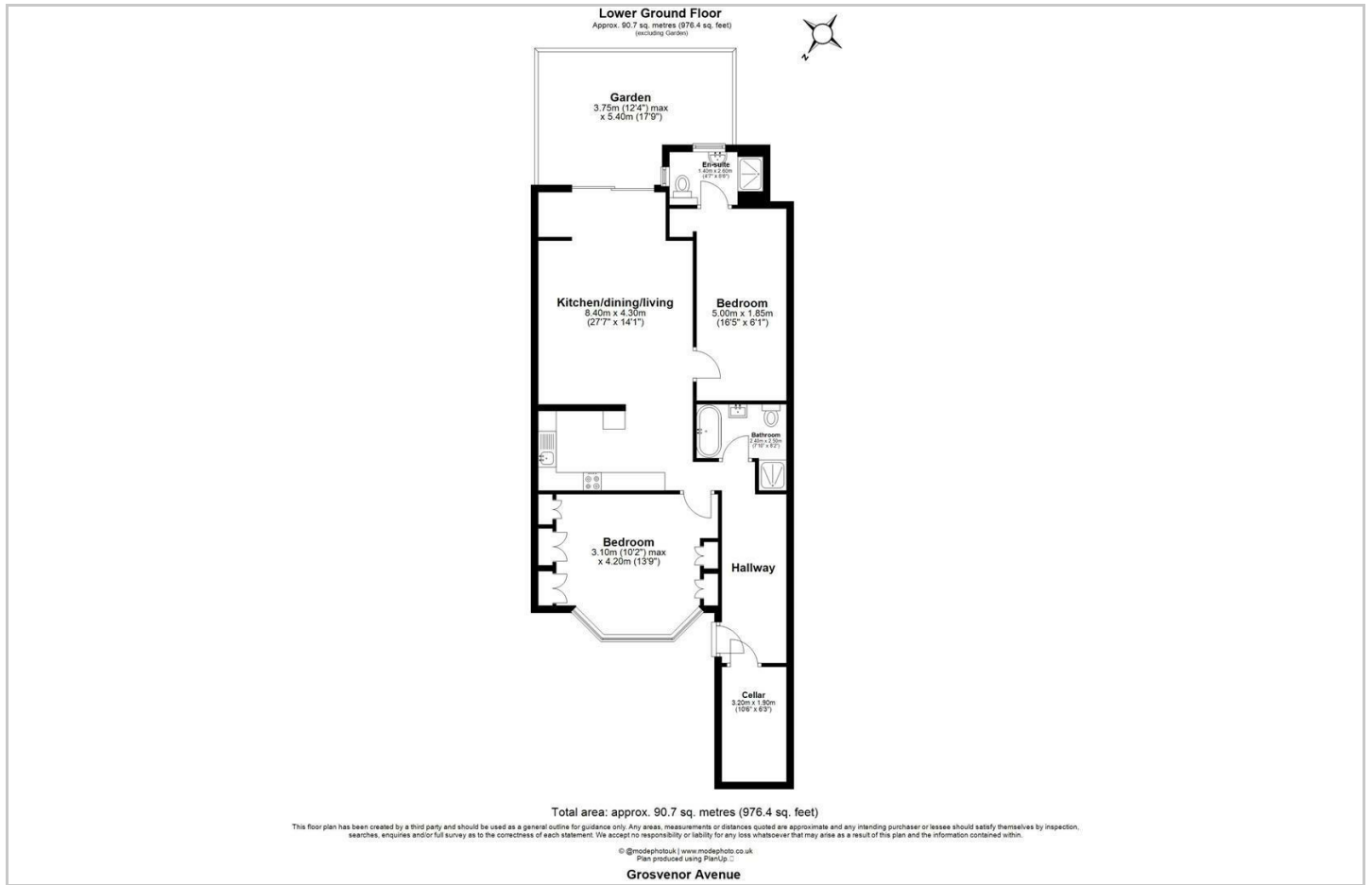
Charming two bedroom, two bathroom flat offering a private entrance and South facing Garden. Both Canonbury and Highbury and Islington Stations just a short stroll away.

- Private South Facing Garden
- Two Large Bedrooms
- Chain Free Sale
- Short Walk to Canonbury and Highbury & Islington Stations
- 1000 sq ft
- Direct Access to Flat
- Two Bathrooms
- Share of Freehold
- Close to Clissold Park and Highbury Fields

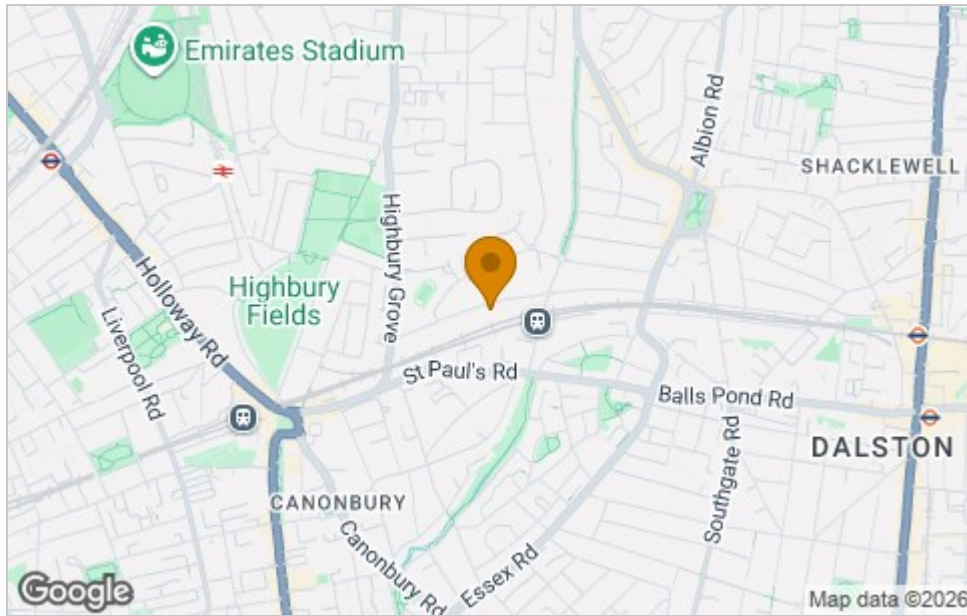




# Floor Plan



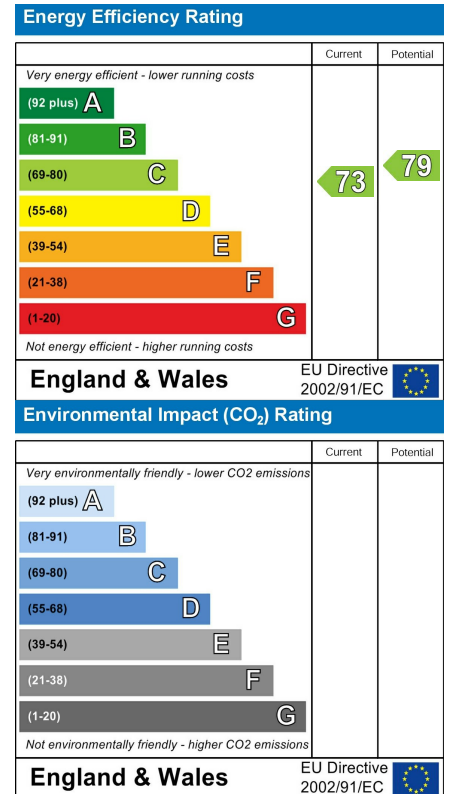
# Area Map



# Viewing

Please contact our James Edward Office on 020 7952 5197 if you wish to arrange a viewing appointment for this property or require further information.

# Energy Efficiency Graph



These particulars, whilst believed to be accurate are set out as a general outline only for guidance and do not constitute any part of an offer or contract. Intending purchasers should not rely on them as statements of representation of fact, but must satisfy themselves by inspection or otherwise as to their accuracy. No person in this firm's employment has the authority to make or give any representation or warranty in respect of the property.