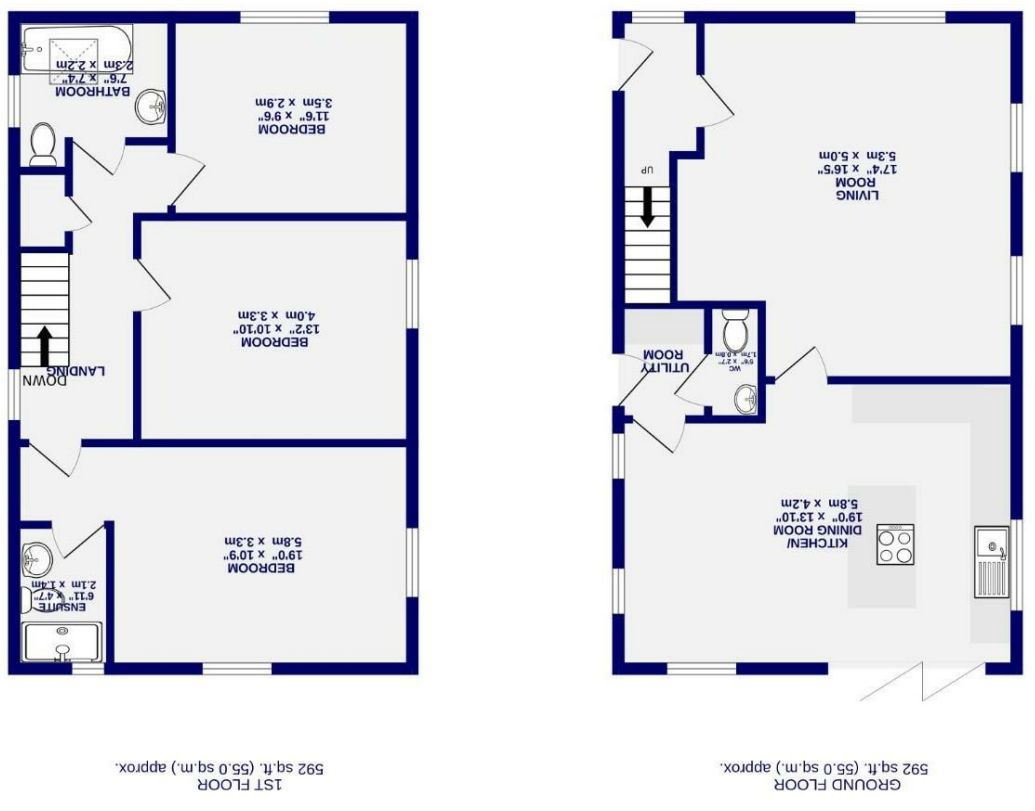


These particulars have been prepared as accurately and as reliably as possible, but should not be relied upon as 'statement of fact'. If there is any point which is of particular importance to you, please contact the office and we would be pleased to check the information. We have not tested any services, appliances, equipment or facilities and nothing in these particulars should be deemed to be a statement that they are in good working order, or that the property is in good structural condition or otherwise. Any areas, measurements, floor plans or distances referred to are given as a guide only and are not precise. Purchasers must satisfy themselves by inspection or by otherwise regarding the items mentioned above and as to the correctness of each of the statements contained in these particulars. No person in the employment of Ashtons has any authority to make or give any representation or warranty whatsoever in relation to this property or these particulars nor enter into any contract relating to the property on behalf of the vendor. Please note that some images may have been edited with the use of AI. We are legally required to carry out AML checks for all purchasers, sellers and giftors, which become mandatory once an offer has been accepted. There is a non-refundable fee of £30 + VAT per purchaser and per giftor for these checks.

- EPC TBC
 - Ideal Family Home
 - Popular Village Setting
 - Open Plan Kitchen Diner
 - Driveway Parking
 - Two Bathrooms & G.F.W.C
 - Three Bedrooms
 - Detached House
- Freehold
Council Tax Band - E
- # Southfield Close Rufforth, York YO23 3RE

Whilst every effort has been made to ensure the accuracy of the floorplans, measurements of rooms and any other areas are approximate. It is advised to take the measurements on the day of the viewing. Buyer's attention is drawn to the fact that the floorplans are not to scale and no guarantee is given as to their accuracy. Measurements shown have not been tested and no guarantee is given as to their accuracy. Please note that some images may have been edited with the use of AI. We are legally required to carry out AML checks for all purchasers, sellers and giftors, which become mandatory once an offer has been accepted.



Southfield Close

Rufforth, York

YO23 3RE

Offers Over £375,000

 3  2

Located in the highly sought-after village of Rufforth, conveniently positioned within easy reach of York and the outer ring road, is this beautifully presented, recently built three bedroom detached home. Offering contemporary living in a semi-rural setting, the property combines modern design with practical family space and attractive countryside views.

Internally, the accommodation opens into a welcoming entrance hall with engineered oak flooring and stairs leading to the first floor. To the front is a spacious lounge, filled with natural light from multiple windows and offering ample room for a variety of seating arrangements, making it an ideal space for both relaxing and entertaining.

To the rear of the property is the impressive dining kitchen, undoubtedly the heart of the home. Fitted with a stylish range of modern wall and base units complemented by solid oak worktops, the space also features a central island with inset hob and additional storage beneath. Integrated appliances include a double oven and dishwasher, with further space for freestanding appliances. Bi-folding doors open onto the rear garden, creating a seamless connection between indoor and outdoor living. Off the kitchen is a useful utility room with access to the garden, along with a ground floor cloakroom.

To the first floor are three well-proportioned bedrooms. The principal bedroom enjoys a dual aspect and benefits from its own en-suite shower room, fitted with a contemporary three-piece suite. The remaining two bedrooms are served by the stylish house bathroom, which features a freestanding bath alongside modern fittings, creating a luxurious yet practical space.



*Edited with AI



*Edited with AI



*Edited with AI

