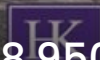




19 Alconbury Close, Great Sankey

Warrington

Offers in Region of £268,950



UK HOME

19 Alconbury Close

Great Sankey, Warrington

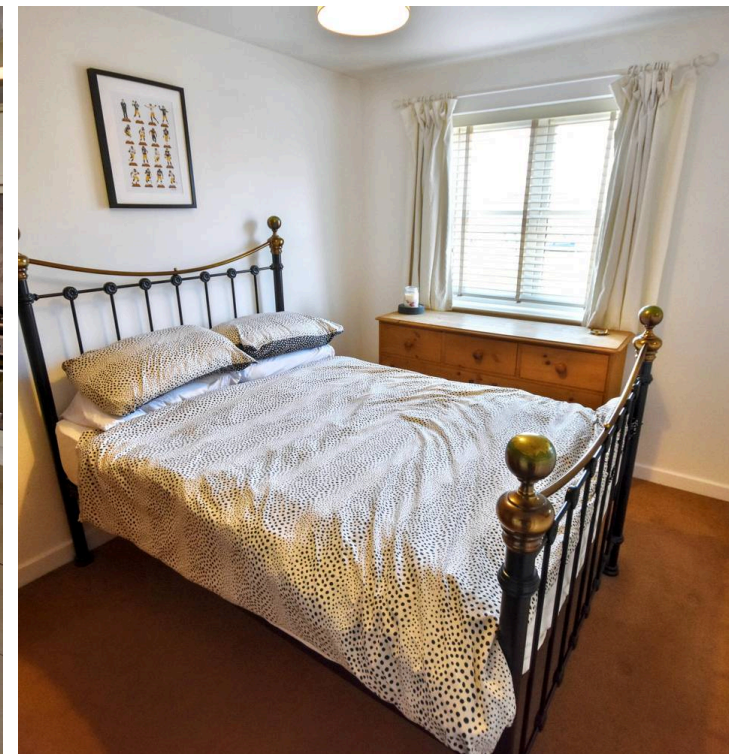
Council Tax band: B

Tenure: Freehold

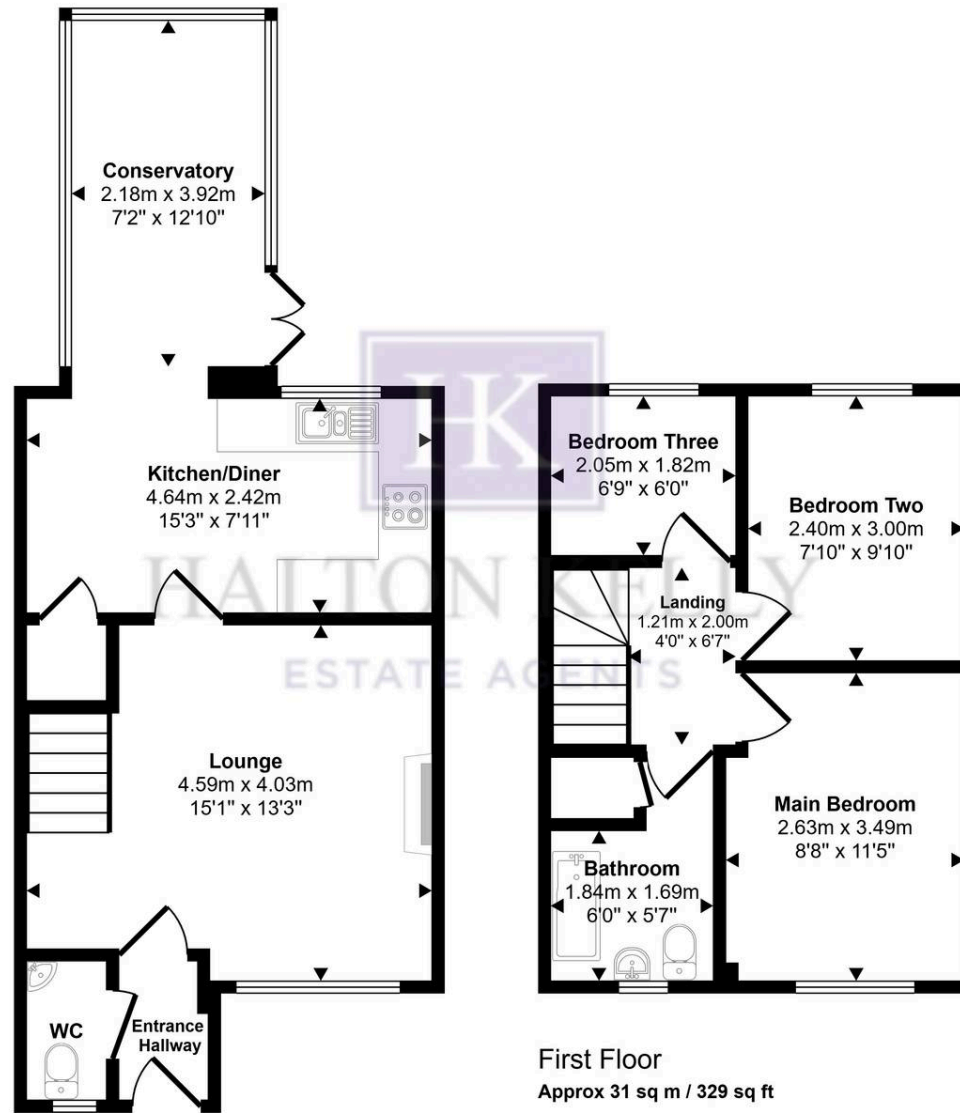
EPC Energy Efficiency Rating: C

EPC Environmental Impact Rating: C

- WELL MAINTAINED
- PRIVATE REAR GARDEN
- FABULOUS FAMILY HOME
- OPEN OUTLOOK
- NEAR TO THE TRAIN STATION
- OPEN PLAN CONSERVATORY
- NO ONWARD CHAIN
- FREEHOLD TITLE



Approx Gross Internal Area
73 sq m / 783 sq ft



Ground Floor
Approx 42 sq m / 454 sq ft

First Floor
Approx 31 sq m / 329 sq ft

This floorplan is only for illustrative purposes and is not to scale. Measurements of rooms, doors, windows, and any items are approximate and no responsibility is taken for any error, omission or mis-statement. Icons of items such as bathroom suites are representations only and may not look like the real items. Made with Made Snappy 360.