

PULLEN

ESTATE AGENTS



8 Mayfair Avenue

Bexleyheath, DA7 4TH

Guide price £450,000

GUIDE PRICE £450,000 to £475,000

A beautifully positioned semi-detached residence offering exceptional potential, set within the highly sought-after Mayfair Avenue.

Requiring modernisation, this attractive two/three-bedroom home presents an excellent opportunity for buyers looking to make improvements to their family home. Ideally situated, the property provides convenient access to Bexleyheath mainline station, along with an excellent selection of highly regarded local schools.

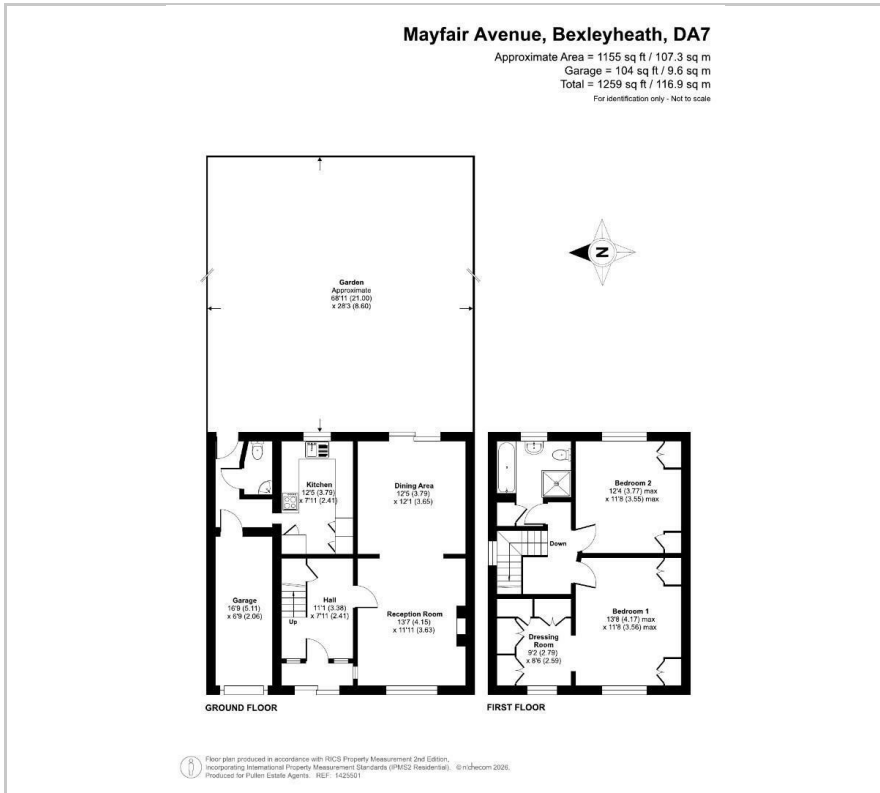
- Potential to improve
- Two/three bedrooms
- Private garden
- Off street parking
- Access to Bexleyheath station
- Potential to extend

Viewing

Please contact our Chislehurst Office on 02034899589 if you wish to arrange a viewing appointment for this property or require further information.



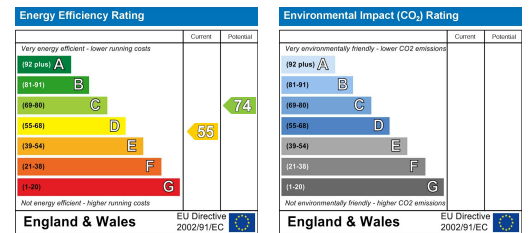
Floor Plan



Area Map



Energy Efficiency Graph



These particulars, whilst believed to be accurate are set out as a general outline only for guidance and do not constitute any part of an offer or contract. Intending purchasers should not rely on them as statements of representation of fact, but must satisfy themselves by inspection or otherwise as to their accuracy. No person in this firm's employment has the authority to make or give any representation or warranty in respect of the property.