

9 Green Close

Epping Green, Epping
Offers Over £515,000

Nestled within the village of Epping Green, this three bedroom end of terrace with detached garage, is a lovely place to call home. Move in ready yet with plenty of options to add your own style, there's much to love here.

Council Tax band: E

Tenure: Freehold

- Four bedrooms
- En-Suite
- Short drive to Epping station and high street
- Garage
- Ground floor Wc
- Established garden



Hammond
& Smith

Kitchen

11' 1" x 8' 4" (3.38m x 2.53m)

Wc

Lounge/Dining room

15' 9" x 15' 4" (4.80m x 4.68m)

Conservatory

13' 4" x 7' 9" (4.06m x 2.36m)

Bedroom 2

15' 4" x 8' 4" (4.68m x 2.55m)

Bedroom 1

20' 6" x 15' 4" (6.26m x 4.68m)

Shower Room

7' 4" x 5' 5" (2.23m x 1.66m)

Bedroom 3

12' 0" x 8' 2" (3.67m x 2.50m)

Bedroom 4

8' 8" x 6' 10" (2.65m x 2.08m)

Bathroom

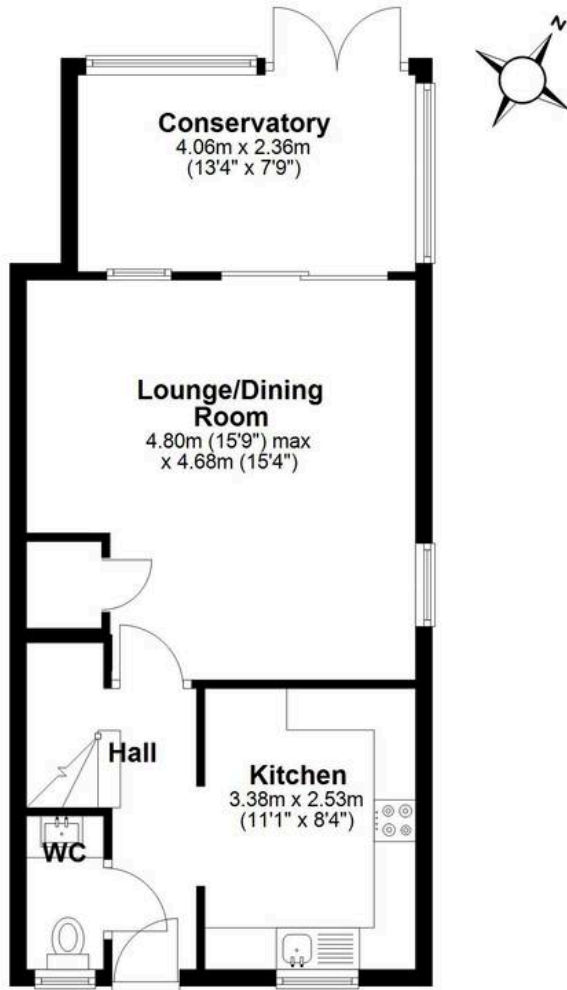
8' 2" x 6' 2" (2.50m x 1.87m)





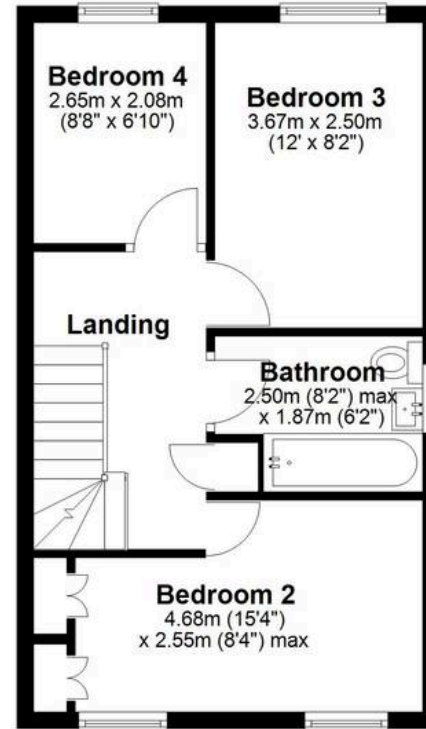
Ground Floor

Main area: approx. 48.7 sq. metres (524.4 sq. feet)
Plus garages, approx. 12.5 sq. metres (134.8 sq. feet)



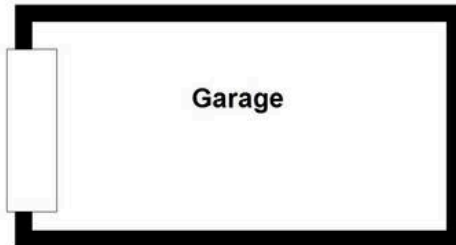
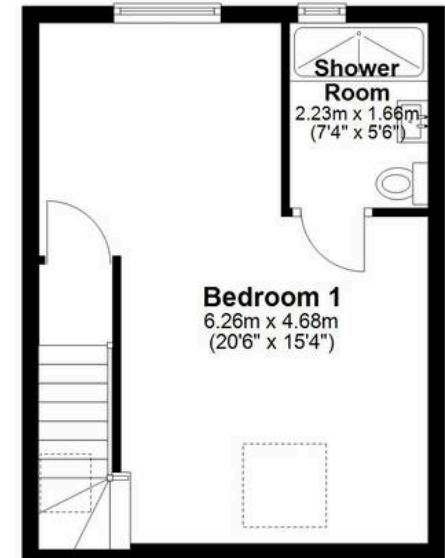
First Floor

Approx. 38.7 sq. metres (416.7 sq. feet)



Second Floor

Approx. 29.3 sq. metres (314.9 sq. feet)



Main area: Approx. 116.7 sq. metres (1256.1 sq. feet)
Plus garages, approx. 12.5 sq. metres (134.8 sq. feet)