



Long Meadow, NW5

£500,000

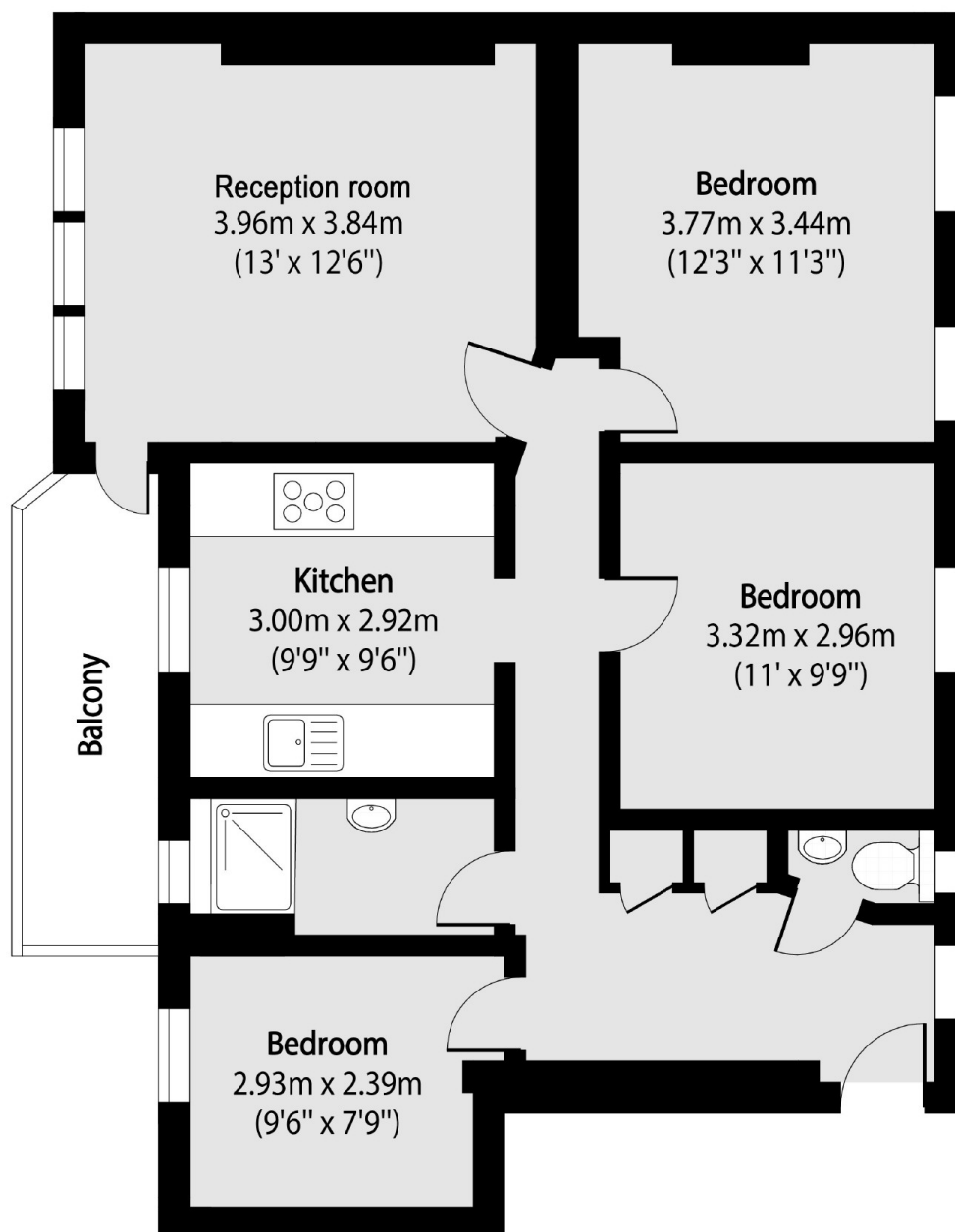
Situated on the ground floor of this well-maintained block is a superb, naturally bright three double bedroom flat offering spacious living throughout. The flat offers approximately 825 sq.ft of accommodation with a large reception room and a private balcony.

Barn Close is located directly opposite the sought after Torriano School and is well-located for the local shops on Brecknock Road. The nearest rail service is at Kentish Town (Northern line and National Rail), offering excellent links into the City and West End.

Features

- Three Bedrooms
- Chain Free
- Private Balcony
- Good Condition
- Leasehold
- Great Location

Long Meadow, London, NW5



Total area (approx): 76.67 sq m (825 sq. ft)

Balcony total area (approx): 5.77 sq m (62 sq. ft)