



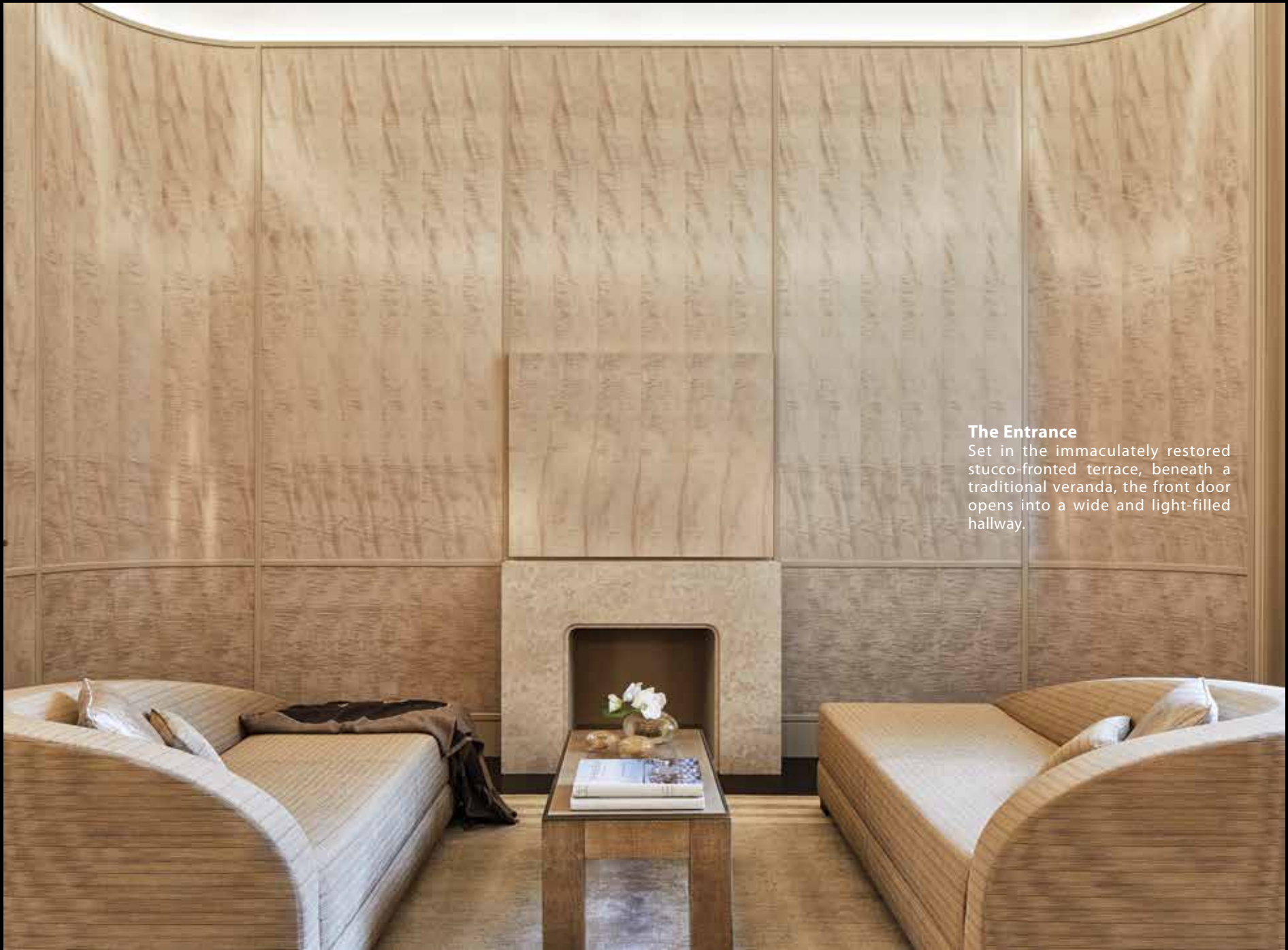
N_o 45

ENNISMORE GARDENS
LONDON

Ennismore Gardens is extremely well located for a range of amenities, including the 350 acres (160 hectares) of Hyde Park, one of eight Royal Parks in the capital. The iconic department stores of Harvey Nichols and Harrods, a wide selection of five-star hotels, London's finest restaurants, international music venues, luxury shopping, leading museums, schools and universities are all within close proximity, thus making it an exceptional international address.



ALEXANDER
MILLETT



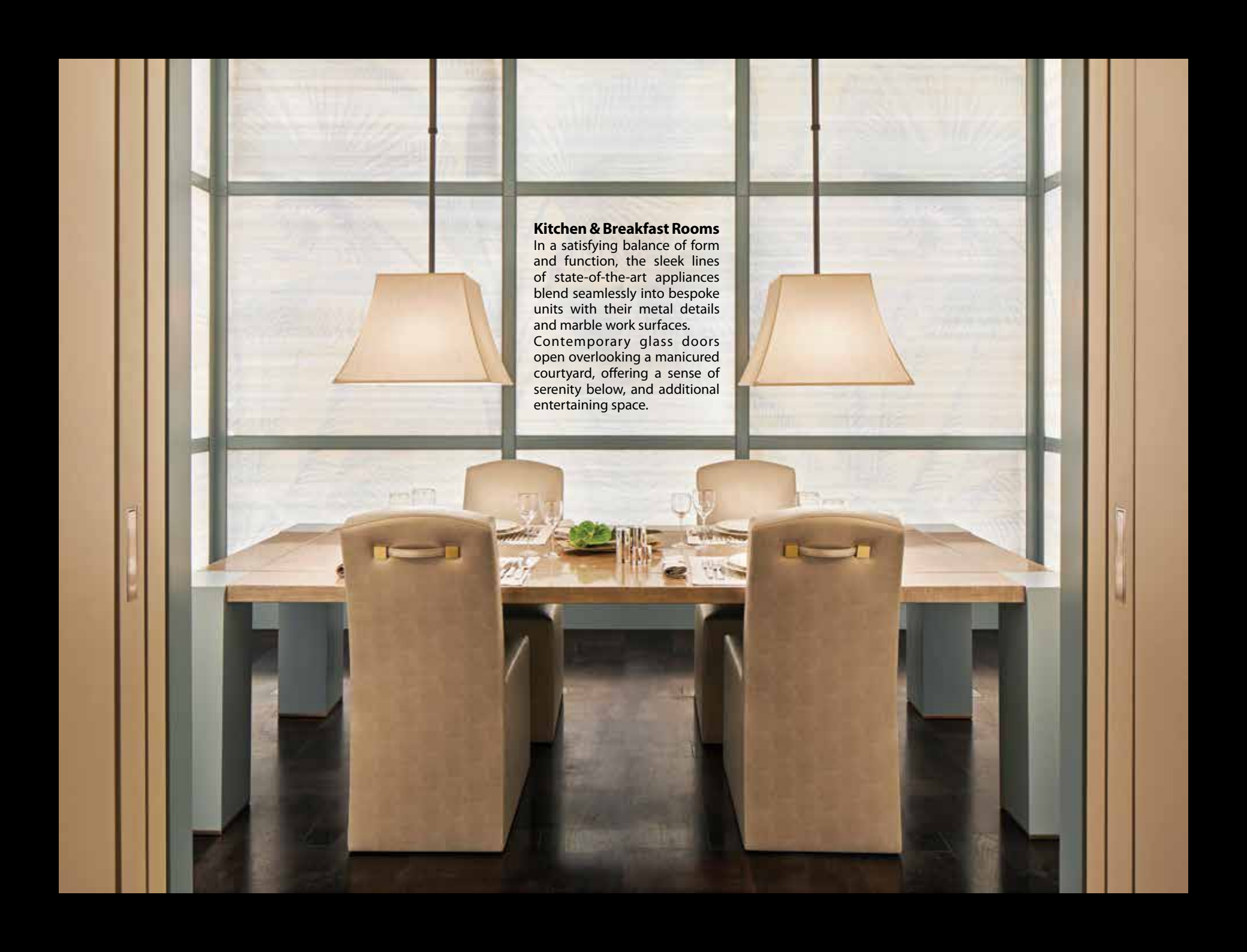
The Entrance

Set in the immaculately restored stucco-fronted terrace, beneath a traditional veranda, the front door opens into a wide and light-filled hallway.



Formal Entertaining Rooms

A well thought out blend of classical and contemporary styling highlights the elegant proportions of the formal reception room and adjoining library. Grand ceilings and a balcony are complemented by a spectacular marble fireplace, with stunning views over the garden square.

A photograph of a dining room. In the center is a rectangular wooden dining table with a light-colored top and a darker base. Four upholstered chairs with a light beige fabric and a small gold-colored detail on the backrest are arranged around the table. The table is set with white plates, silverware, and glasses. A small green garnish is on the table. Two large, square, beige pendant lamps hang from the ceiling. The background is a large window with a grid pattern, looking out onto a bright, possibly overcast day. The floor is dark wood. The overall aesthetic is modern and minimalist.

Kitchen & Breakfast Rooms

In a satisfying balance of form and function, the sleek lines of state-of-the-art appliances blend seamlessly into bespoke units with their metal details and marble work surfaces. Contemporary glass doors open overlooking a manicured courtyard, offering a sense of serenity below, and additional entertaining space.







Master Suite

A magnificent master suite with green views and a spacious walk through wardrobe leading to an opulent bathroom. The light colour palette offers a sense of tranquillity and the tactile textures throughout add to the luxury of this elegant bedroom suite.







Bedroom Suites

In the five further bedroom suites each bathroom is individual, each with different striking Italian marble and complimentary fabrics within the body of the bedroom.

The fabrics have been carefully chosen, each item of furniture beautifully designed and every element carefully considered, coming together to create a selection of exquisite bedroom suites.











Karaoke Room

A discreet and fun room on a half landing, that has been sound proofed and installed with Karaoke equipment, a moment away from the formal first floor reception room.



Gym, Spa and Pool

A shimmering confluence of mirrors, marble, and high gloss timber veneer produces a breathtaking relaxation space with a steam room, sauna, and swimming pool, that includes a stair leading up to the private courtyard.





Bespoke Wine Room and Cellar

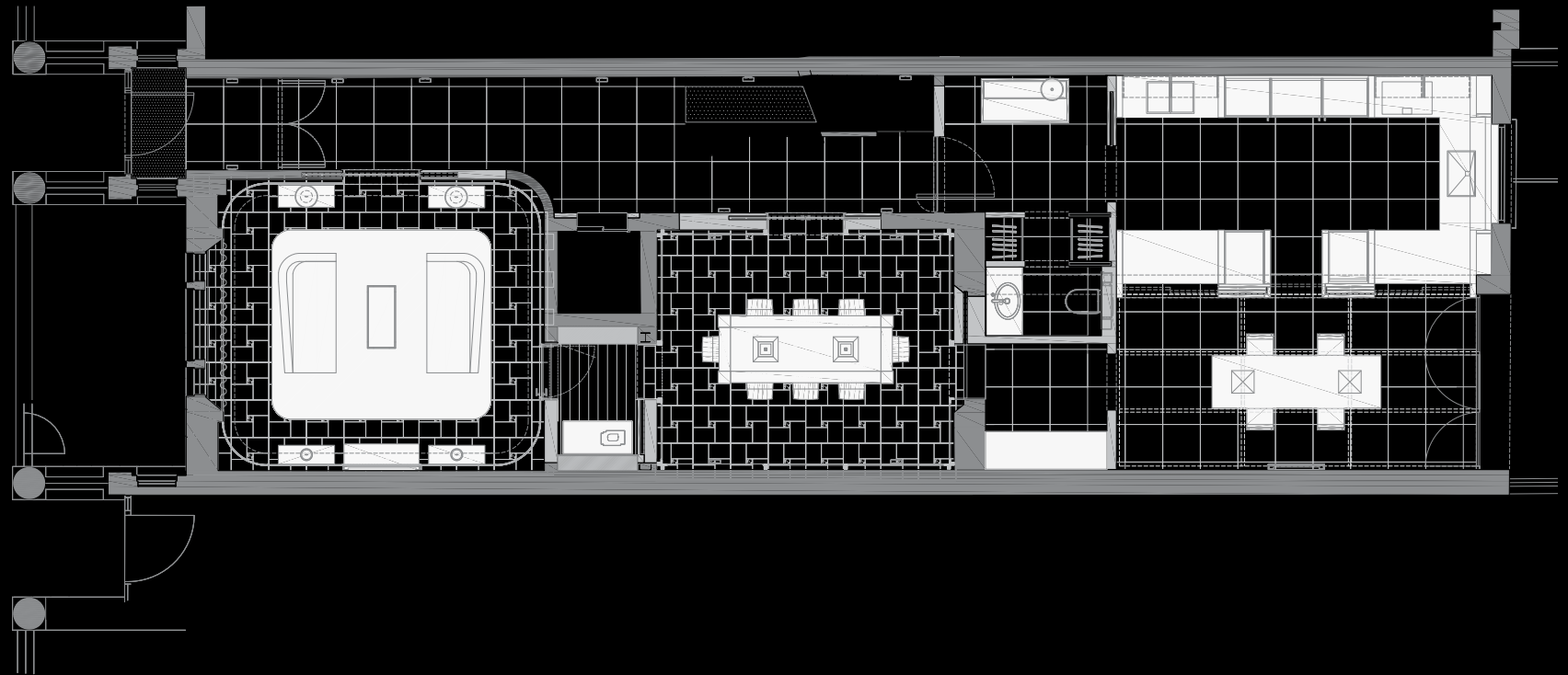
The wine room is made up of floor to ceiling wine racks with presentation lighting for ambience, that includes cigar storage.

A beautifully hidden away room with it's stand out feature being the newly dug 'corkscrew' style wine cellar within the floor with hydraulic access.

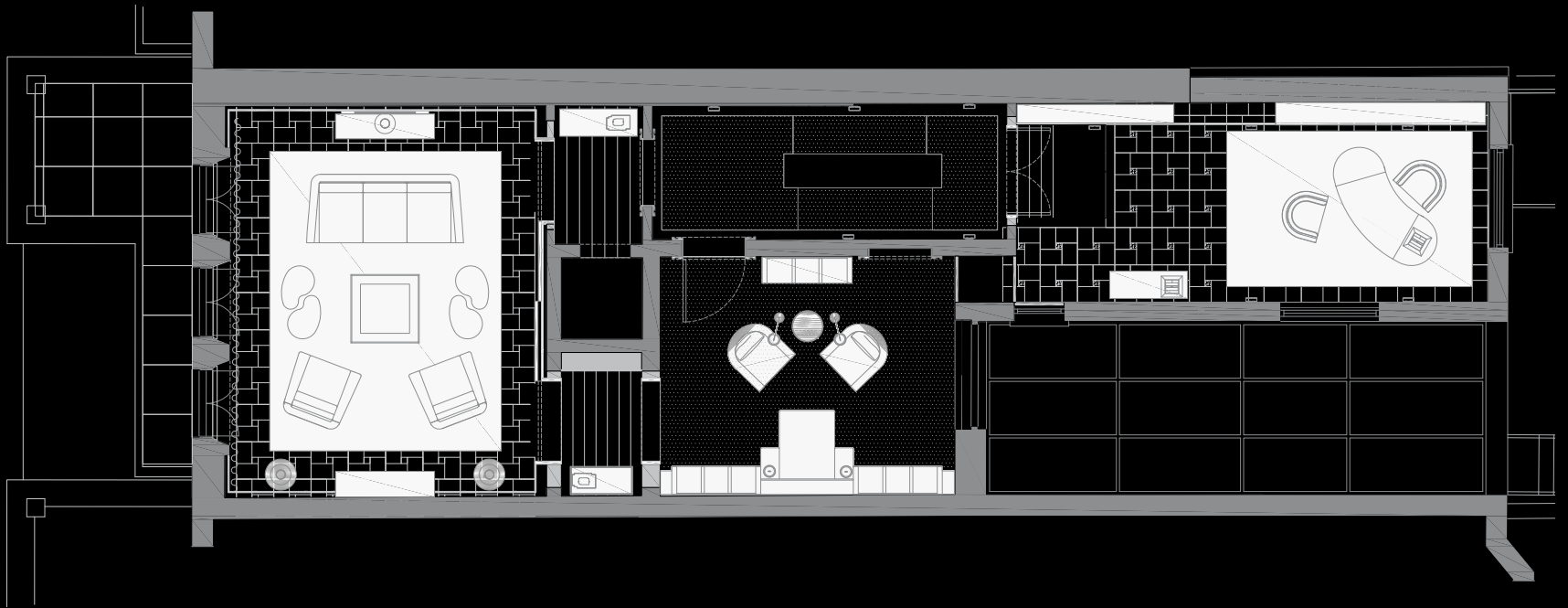
Cinema and Games Room

An impressive wide and high-ceilinged cinema and games room benefitting from direct access to a private courtyard. The room incorporates a pool table, large television, a drop-down cinema projector and screen for a fully immersive experience and atmosphere.

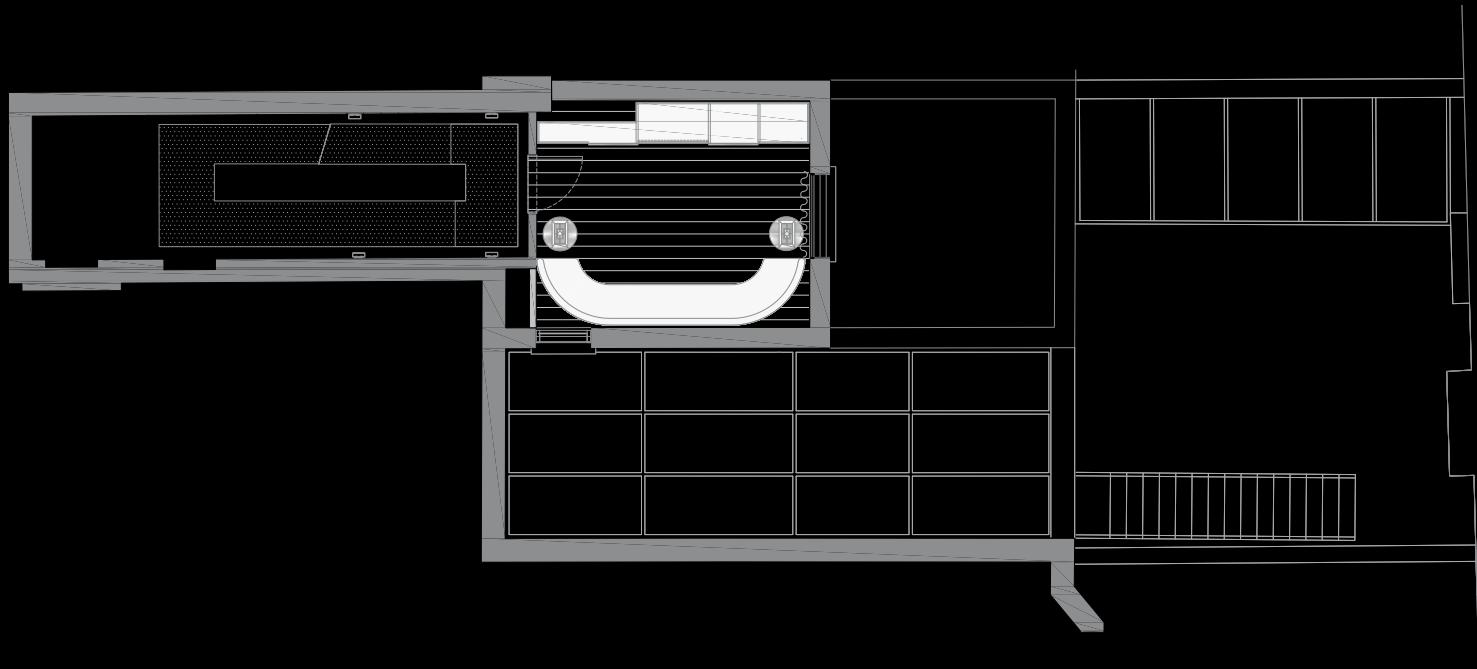




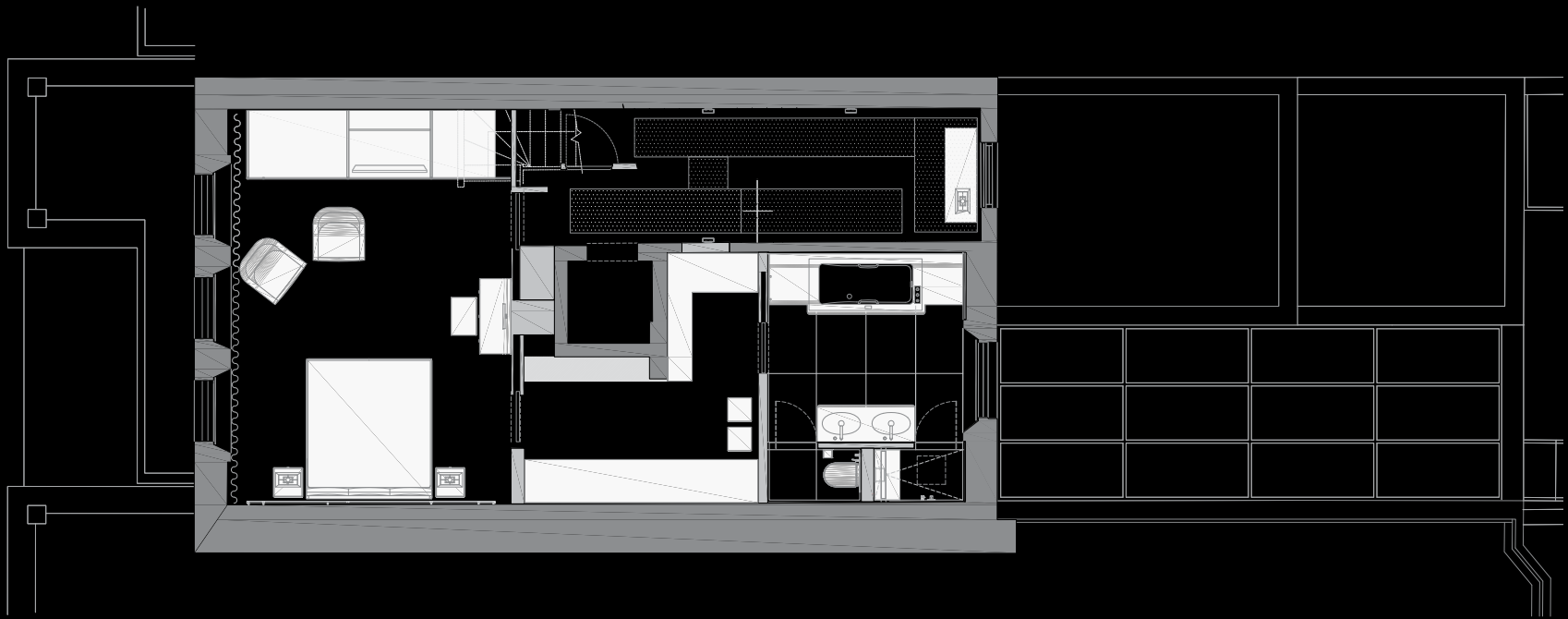
Grand Floor Plan



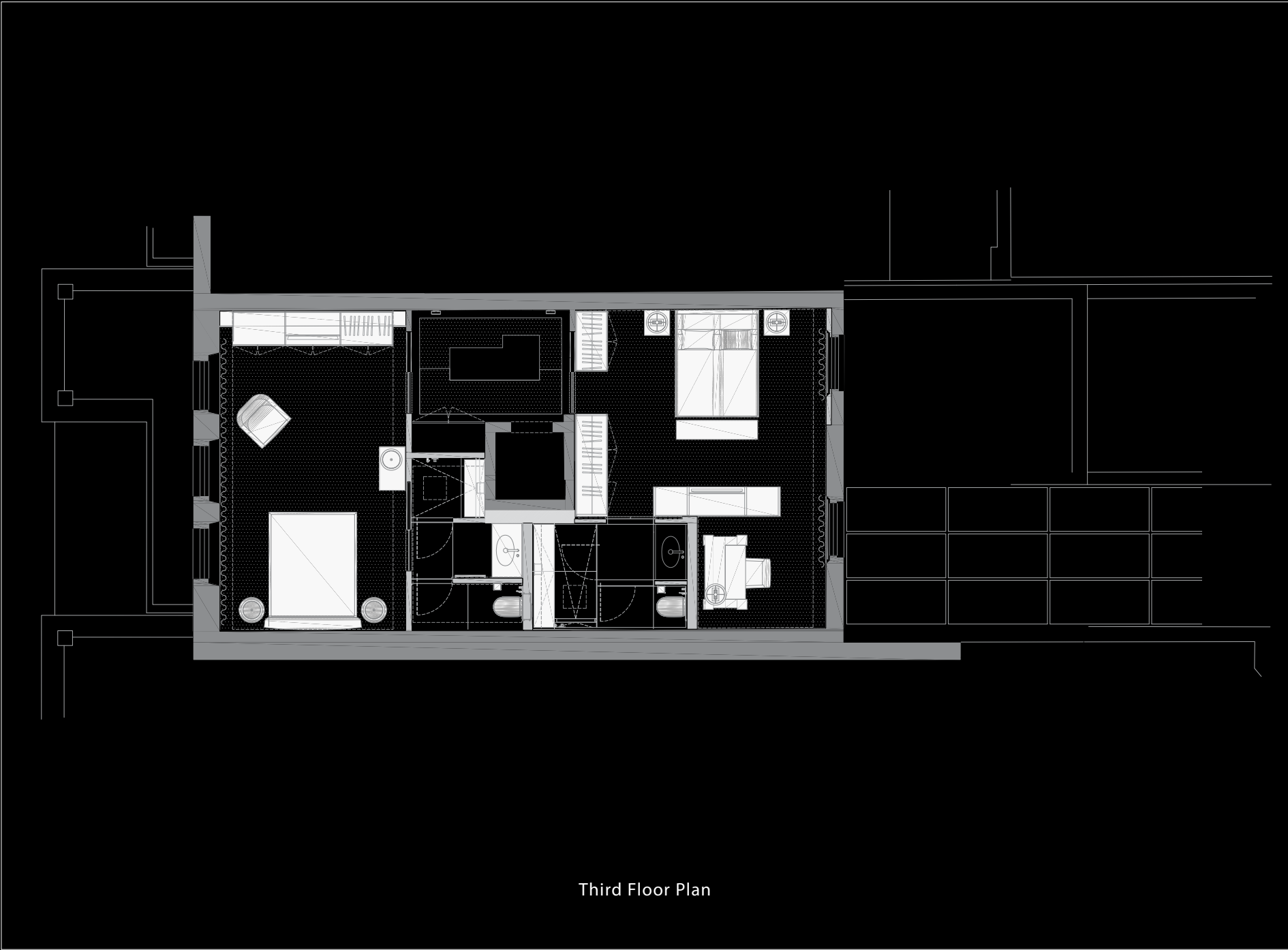
First Floor Plan



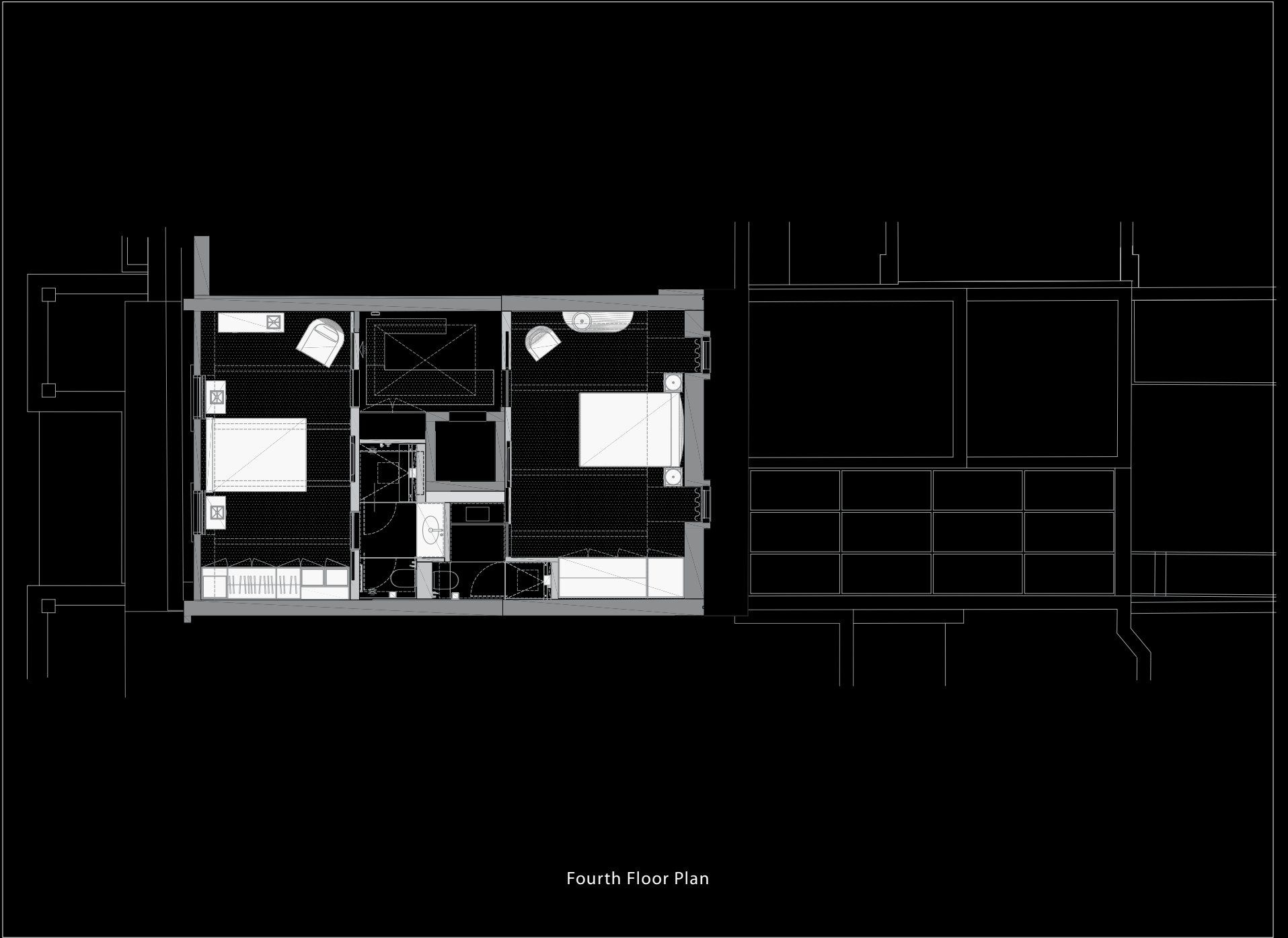
Mezzanine Floor Plan



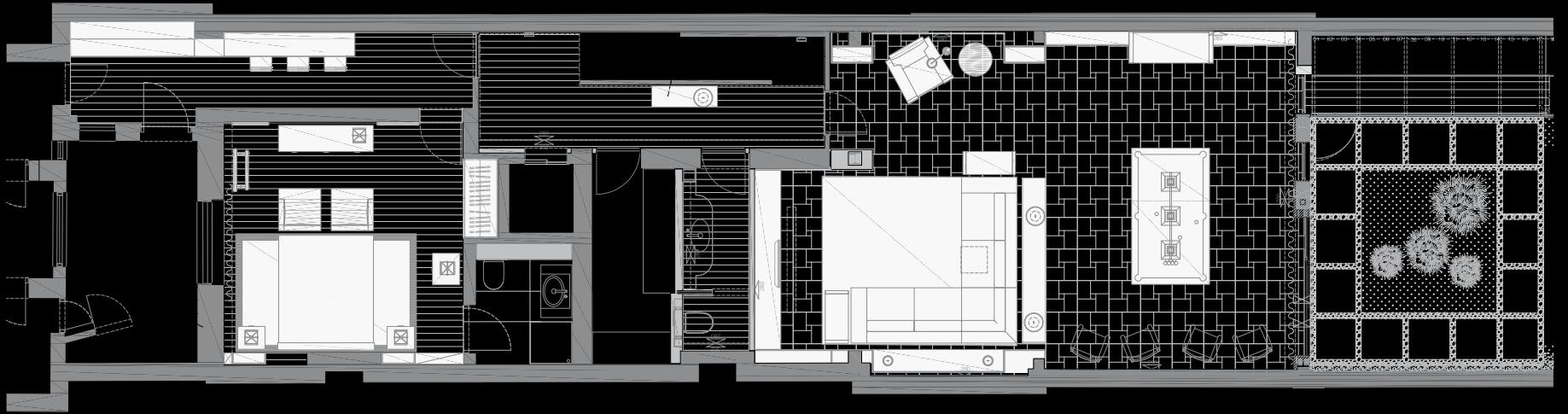
Second Floor Plan



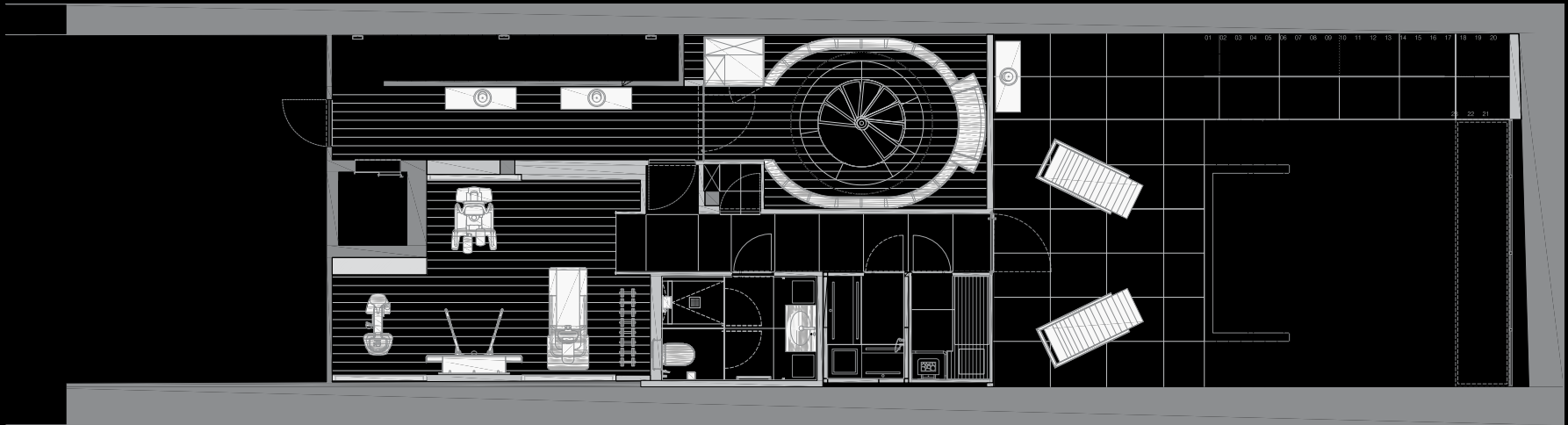
Third Floor Plan



Fourth Floor Plan



Basement Floor Plan



Sub Basement Floor Sections

