



OVER 60?

Secure this property
for up to **59% less!**

Price

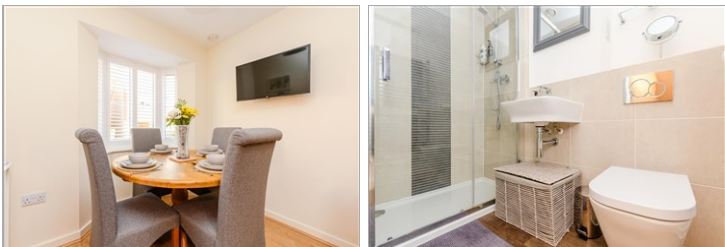
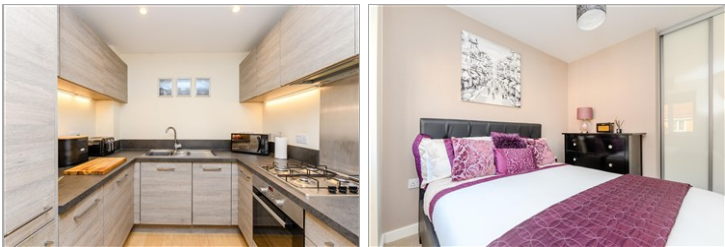
£475,000

Freehold

3x  3x  1x 

**Hazelbourne Avenue,
Borough Green,
Sevenoaks, Kent, TN15**

Wards
Helping you move forwards



Main features

- Off road parking with car port and storage
- Sought after residential area
- Easy access to M20 and M25
- Walking distance to shops and local train station
- Stunning garden with sunny entertaining space

Accommodation

GROUND FLOOR

Entrance Hall

Kitchen: 14'1 x 8'0 (4.30m x 2.44m)

Lounge: 15'2 x 11'6 (4.63m x 3.51m)

FIRST FLOOR

Landing

Bedroom 1: 12'2 x 8'2 (3.71m x 2.49m)

En-suite: 6'5 x 4'8 (1.96m x 1.42m)

Bedroom 2: 9'5 x 8'2 (2.87m x 2.49m)

Bedroom 3/Office: 8'6 x 6'7 (2.59m x 2.01m)

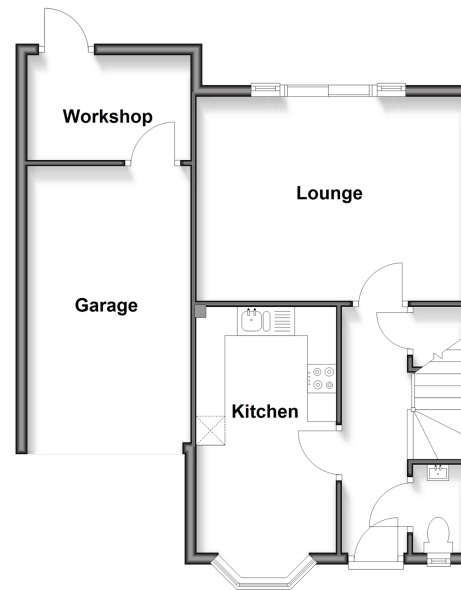
Bathroom: 7'6 x 6'7 (2.29m x 2.01m)

OUTSIDE

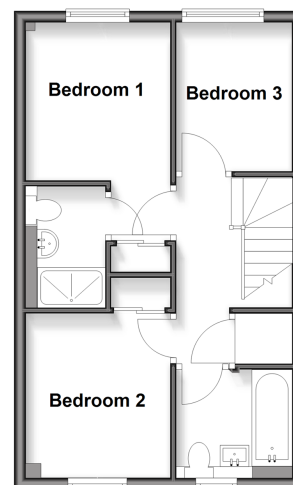
Car Port with Storage

Rear Garden

Ground Floor
Approx. 56.6 sq. metres (609.1 sq. feet)



First Floor
Approx. 36.7 sq. metres (394.9 sq. feet)



Call West Kingsdown - 01474 852816 ■ wardsofken.co.uk

- Legal advice should be taken to verify fixtures/fittings, planning, alterations and/or lease details
- Appliances & services are untested, dimensions are approximate and floor plans are not to scale
- Through a Homewise Home For Life Plan people aged 60+ can secure this property for up to 50% less, by purchasing a Lifetime Lease.



14420155/20251031/YE/JS