



Chelsea Cloisters, SW3

£2,500 Per calendar month

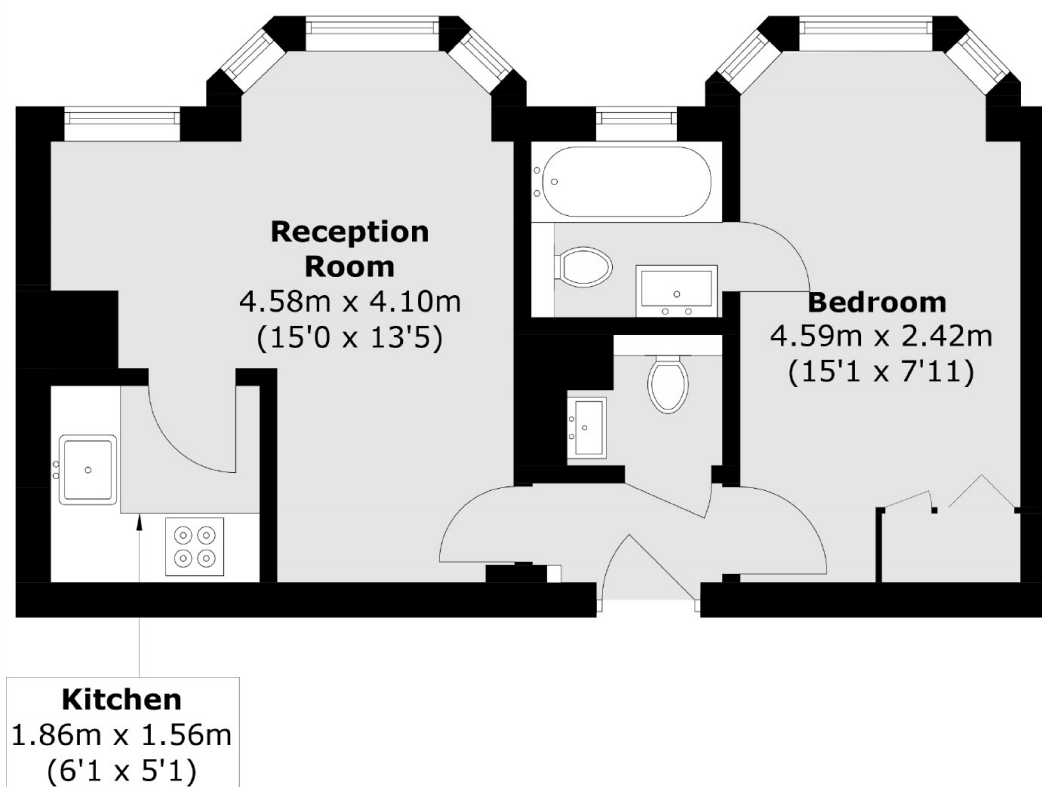
A newly redecorated one bedroom flat on the fifth floor of a portered mansion block. The flat benefits from a modern kitchen and bathroom and a good amount of built in storage.

Chelsea Cloisters is excellently located between Sloane Square and South Kensington tube stations. The world famous shops and restaurants the Kings Road have to offer are also within walking distance.

Features

- One Bedroom
- One Bathroom
- Newly Redecorated
- Fifth Floor
- Lift
- Porter

Chelsea Cloisters, London, SW3



Fifth Floor

Total area (approx.): 35.0 sq. m (376.7 sq. ft)