



Kensington High Street, W8

£2,774 Per calendar month

In the heart of Kensington, this one bedroom flat is on the top floor of a mansion block. It has recently been refurbished to a high specification and comes with a day time porter.

Phillimore Court is moments from the shops of Kensington High Street and the green open spaces of Holland Park and Kensington Gardens.

Features

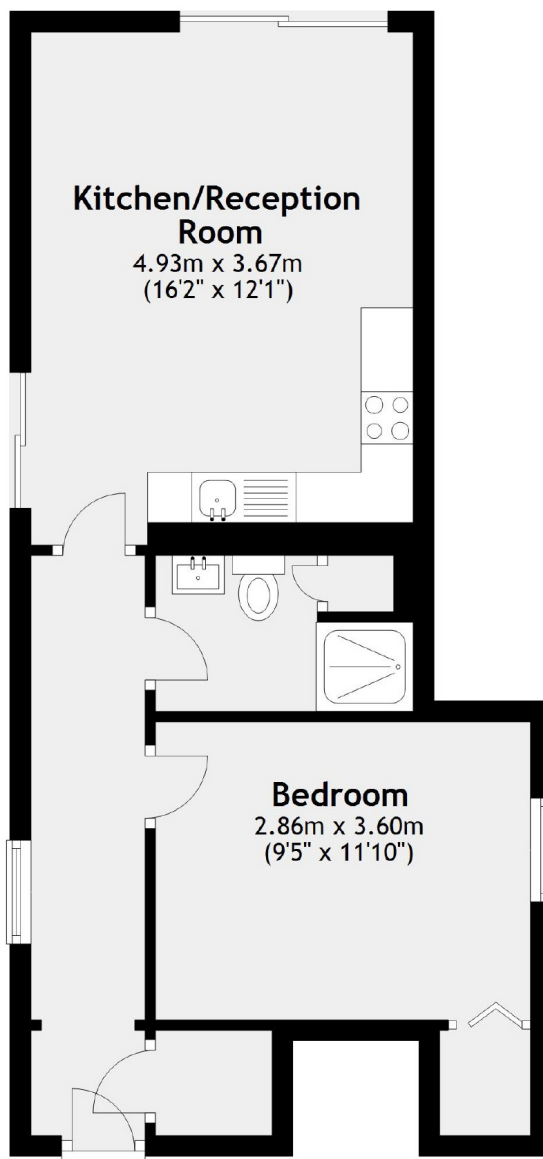
- One Bedroom
- Modern Kitchen and Bathroom
- Recently Refurbished
- Top Floor
- Lift Access
- Portered Mansion Block



Kensington High Street, W8



Kensington High Street,
London, W8



Total area: approx. 41.6 sq. metres (447.7 sq. feet)

Dexters

Kensington
1 Campden Hill Road
London
W8 7DU
Lettings
020 7067 2434

Energy Rating: . We aim to make our particulars both accurate and reliable. However they are not guaranteed; nor do they form part of an offer or contract. If you require clarification on any points then please contact us, especially if you're traveling some distance to view. Please note that appliances and heating systems have not been tested and therefore no warranties can be given as to their good working order.

 **RICS** | Regulated
Estate Agent
and Letting Agent

dexters.co.uk