



Chelsea Manor Street, SW3

£425 Per week

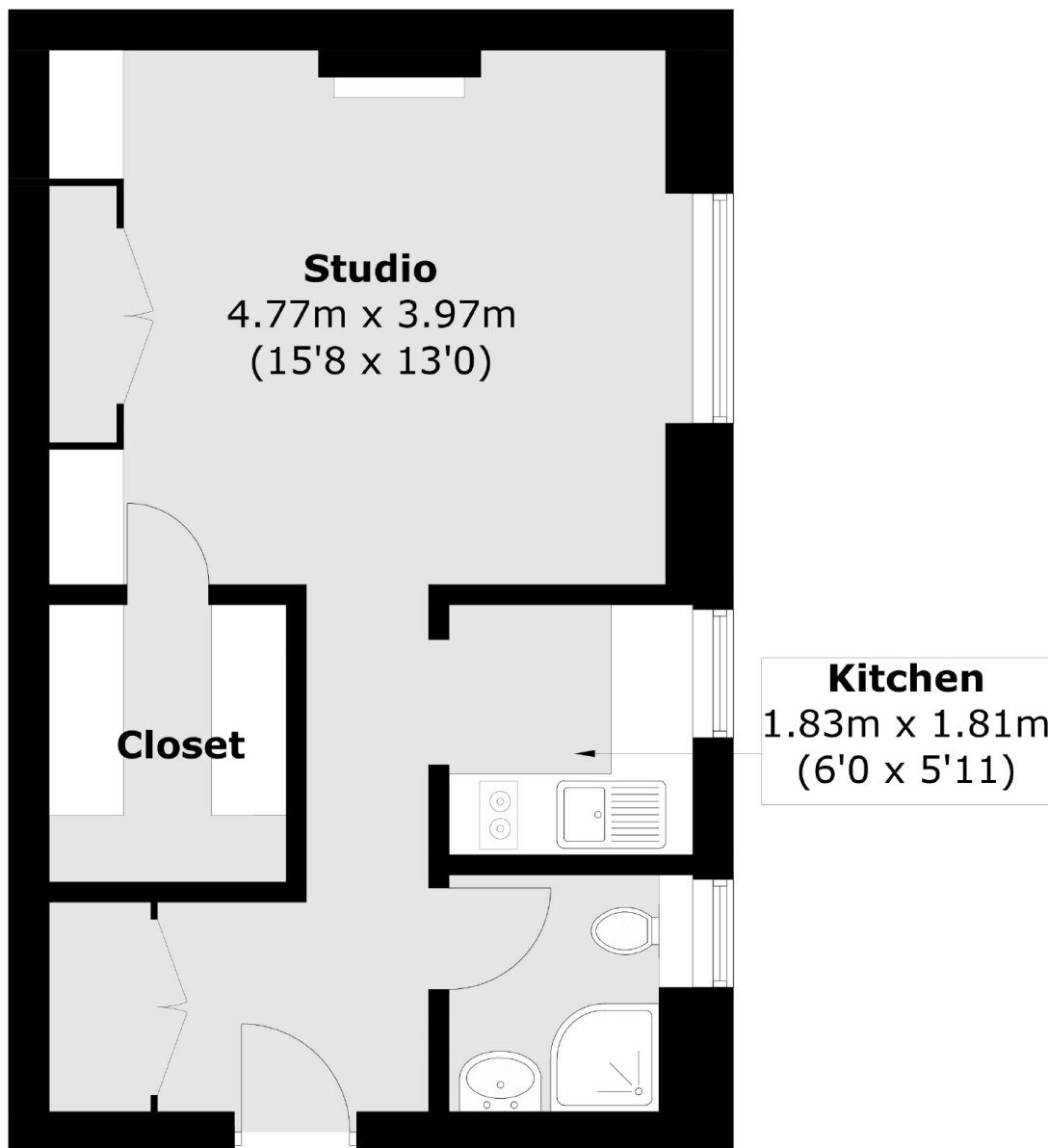
A spacious studio apartment in this portered mansion building with a lift on the second floor. The studio benefits from a separate modern kitchen and bathroom and has a large walk in wardrobe.

Off Kings Road with a wide choice of well known high street shops and upmarket boutiques, bars and restaurants. The closest supermarket is Waitrose and Marks and Spencer around the corner.

Features

- Studio
- Portered Block
- Second Floor
- Walk In Wardrobe
- Recently Refurbished
- Heating & Hot Water Included

Chelsea Manor Street, London, SW3



Total area (approx.): 37.4 sq. m (402.5 sq. ft)