



Hilton Square, Leigh, WN7

£1,195 PCM

In the popular town of Leigh, Hilton Park is a development of 103 properties located conveniently for leisure and work activities, with access to Manchester city centre.

The Leathley is a wonderful family home with plenty of space. Entering through the hallway, your living room is at the front of the property before leading through to an open plan kitchen/dining area. With a WC and French windows to your private garden, the downstairs has space to entertain and relax.

On the second floor the master bedroom comes complete with en-suite shower room and storage cupboard, whilst a family bathroom with shower and bath is found along the landing. A further two bedrooms – one double and one single – complete the layout upstairs.

Benefiting from the centres of Leigh and Wigan nearby with their wide range of amenities, Hilton Park is itself within close proximity to a number of highstreet shops including Sainsbury's, Aldi and Asda as well as the Leigh Parsonage Retail Park. Leisure activities are well catered for too with Powerbeck Gym and Firs Park both within easy walking distance from the development.

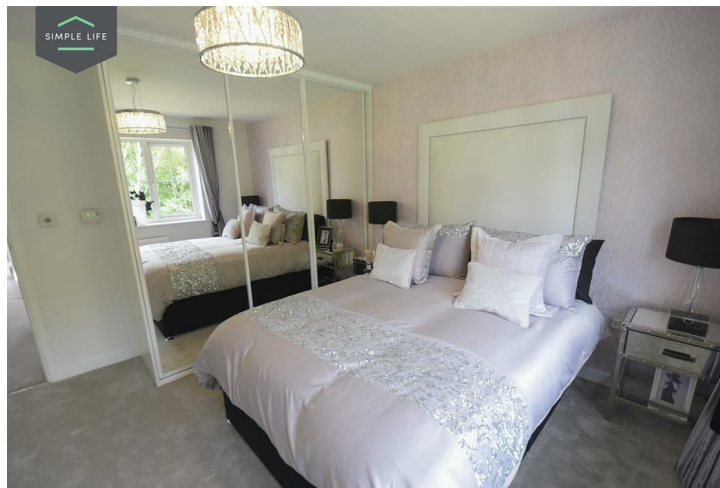
The nearest train station to the development is Atherton just 2.5 miles from Hilton Park providing direct services to Manchester City Centre, whilst Wigan station has additional services through Avanti's West Coast mainline.

Further transport by car is easily achieved with the site being between the A580 East Lancs Road, M6, M60, M58 and M61 giving you straight forward access to the wider motorway network.

To visit the site please use postcode WN7 1RL.

Deposit: £1370
Holding deposit: £270
Unfurnished
Council tax: B
Available 23rd February 2026





Key Features

- Car Parking Space
- Dishwasher
- Washing/drying machine
- Carpets up the stairs and in the bedrooms
- Blinds in the bedrooms
- Security Alarm
- Fridge-freezer
- Modern kitchen worktops and units
- Private back garden

Location

