



Pixham Lane, Dorking

£2,600 Per Month





“

Whether you're drawn by the character, the generous proportions or the idyllic setting, this apartment offers an exceptional lifestyle within easy reach of Dorking town centre and excellent transport links. Available immediately on an unfurnished basis, contact Ralph James today to arrange your viewing.

”



Set within the distinguished Pixham Firs, this substantial ground floor apartment offers over 1,000 sq ft of well-balanced accommodation in one of Dorking's most picturesque settings.

The welcoming entrance hall leads through to an impressive bay-fronted sitting room, where high ceilings, ornate period detailing and large windows create a wonderfully bright living space. Across the hall, the spacious kitchen/dining room provides ample room for both everyday dining and entertaining, complete with a range of fitted units and white goods.

Both bedrooms are excellent-sized doubles, offering flexibility for those working from home or requiring guest accommodation. A well-appointed family bathroom completes the internal layout.

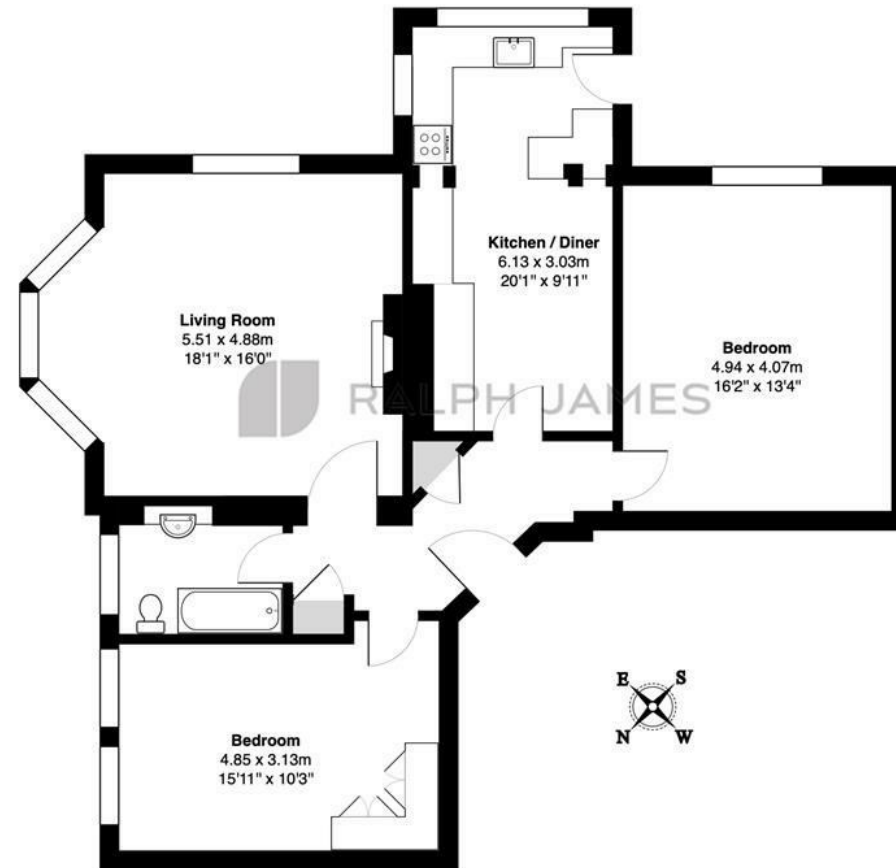
Outside, residents enjoy beautifully maintained communal grounds with mature planting, expansive lawns and direct access to the banks of the River Mole, creating a peaceful environment rarely found so close to the town centre. The property also benefits from a private garage together with additional residents' parking.

Situated on the highly regarded Pixham Lane, the apartment is conveniently placed for Dorking town centre, the mainline railway stations, nearby countryside walks and excellent road connections including the A24 and M25.

Offered unfurnished and available for immediate occupation, this is an exceptional opportunity to rent a character home in one of Dorking's most desirable residential locations. Early viewing is strongly recommended.

Need to know

- Ground floor apartment within an elegant period conversion
- Two generously proportioned double bedrooms
- Spacious sitting room with attractive bay window
- Large kitchen/dining room with appliances included
- Character features including decorative ceilings and high ceilings
- Modern bathroom
- Garage and residents' parking
- Beautiful communal gardens backing onto the River Mole
- Peaceful setting on the sought-after Pixham Lane
- EPC: E



Ground Floor

Pixham Firs, Pixham Lane Pixham, Dorking

Total Area: 95.6 m² ... 1029 ft²

FOR ILLUSTRATIVE PURPOSES ONLY.

Whilst every attempt has been made to ensure the accuracy of the floor plan shown, all measurements, positioning, fixtures, features, fittings and any other data shown are an approximate interpretation for illustrative purposes only and are not to scale.

No responsibility is taken for any error, omission, miss-statement or use of data shown.

The above statement applies to both 'Still Moving London LTD' and the Company or individual displaying this floor plan.

Unauthorised reproduction prohibited.

Â© Still Moving London LTD (www.stillmoving.london)



Interested?

dorking@ralphjames.co.uk
01306 284555

#

ralphjames.co.uk