



**Singer Mews, SW4**

**£500,000**

**Dexters**



## Singer Mews, SW4

A well presented and contemporary first floor apartment, set within a highly desirable gated development, offering approximately 825 sq.ft of well balanced space. The property features a bright and spacious reception room with direct access to a private balcony, providing an ideal space for both relaxing and entertaining. There is a generously sized, fully fitted kitchen, along with two well proportioned double bedrooms. The principal bedroom benefits from an en-suite bathroom, complemented by a separate family bathroom serving the second bedroom. Further benefits include secure gated access, well maintained communal areas, and the advantage of being sold chain free.

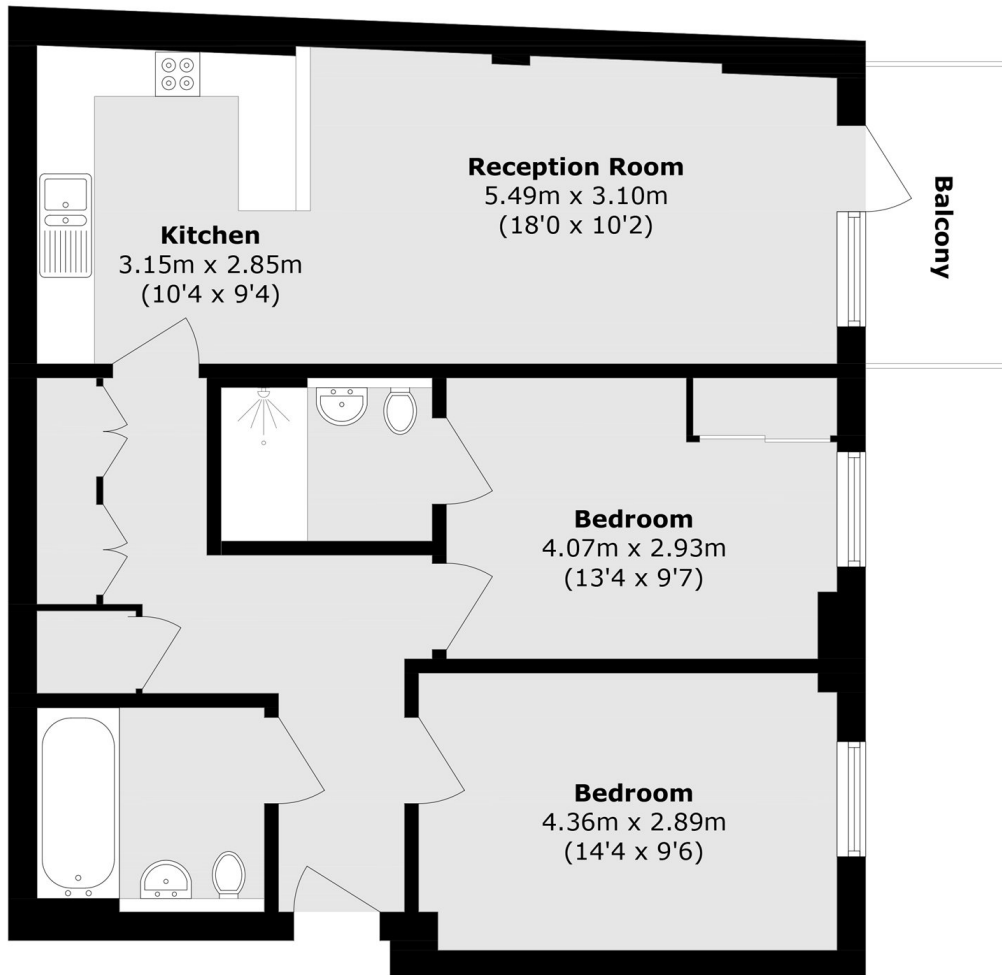
Singer Mews is situated moments from the many shops, restaurants and cafés of Clapham Old Town & Clapham High Street. Clapham North & Stockwell Underground stations are a very short walk away.

### Features

- Chain Free
- Private Gated Development
- Two Double Bedrooms
- Two Bathrooms
- Storage
- Balcony



# Singer Mews, London, SW4



Total area (approx.): 76.6 sq. m ( 824.5 sq. ft)  
Balcony area (approx.): 4.6 sq. m (49.5 sq. ft)