



**Church Street, Loose, Maidstone, Kent, ME15 0BU**  
**Guide Price £325,000**

\*\*\*GUIDE PRICE £325,000 TO £350,000\*\*\*NO FORWARD CHAIN\*\*\*IMMACULATE THREE BEDROOM COTTAGE IN THE HEART OF THE LOOSE CONSERVATION AREA WITH FEATURE LOG BURNER, COTTAGE GARDEN AND A PRIVATE SAUNA  
Nestled in the picturesque Loose Valley Conservation Area, this beautifully restored three-bedroom character home offers a rare opportunity to embrace nature while enjoying the convenience of nearby amenities. With no onward chain, this home is ready for its next owner to move straight in and enjoy its charm and comfort. Surrounded by stunning countryside, residents can explore scenic walks, enjoy the vibrant local wildlife, and visit the well-regarded village pub just a short stroll away. There is an excellent primary school within walking distance, while Maidstone, with its range of shops, restaurants, and entertainment, is just four miles away.

The property has been sympathetically restored to a high standard and offers versatile accommodation across three floors. Inside, there is a welcoming entrance hall. On the lower ground floor, there is a bedroom and a useful W/C. The ground floor features a beautifully designed kitchen, complete with integrated appliances, including a dishwasher and fridge freezer, which then leads into a cosy living room. The living room is enhanced by a feature fireplace with a log burner, creating a warm and inviting atmosphere. On the first floor, there are two well-proportioned bedrooms and a modern shower room.

To the rear, the charming cottage garden is a true highlight, featuring manicured lawns, a delightful brick pathway, and beautifully stocked borders. Additional benefits include a shed for storage and even a private sauna for ultimate relaxation.

A rare find in an idyllic village setting, this home perfectly blends period character with modern comfort. Contact us today to arrange your viewing!



**GROUND FLOOR**

Lounge/Kitchen 20'9" x 10'8" (6.35m x 3.26m)

**LOWER GROUND FLOOR**

Bedroom 1 13'1" x 9'9" (4.01m x 2.99m)

**FIRST FLOOR**

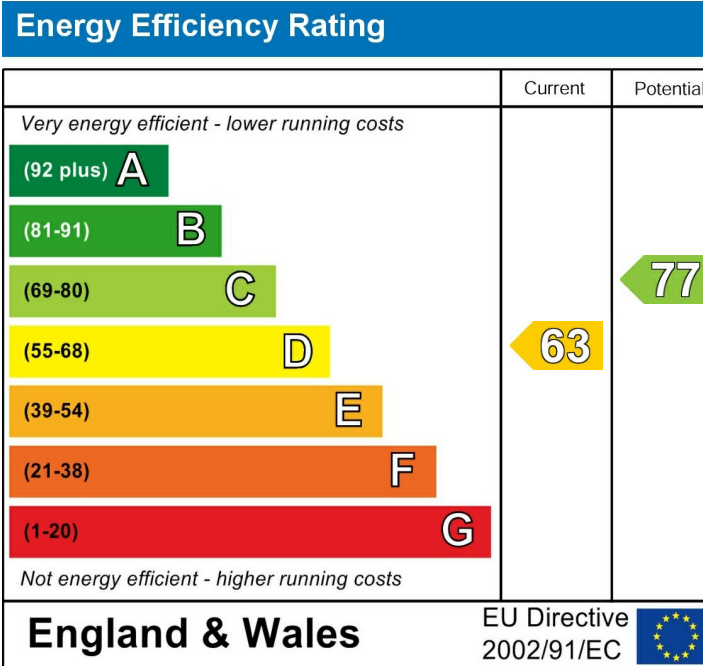
Bedroom 2 11'1" x 10'11" (3.39m x 3.34m)

Bedroom 3 9'4" x 5'11" (2.85m x 1.82m)

Bathroom

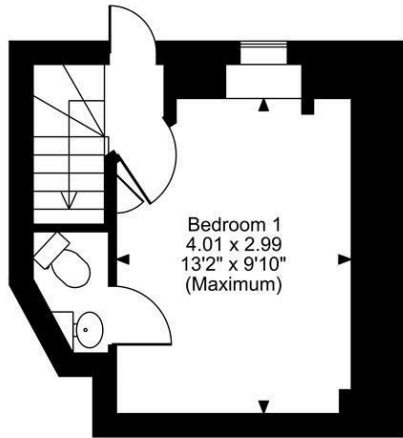
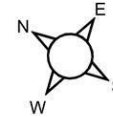
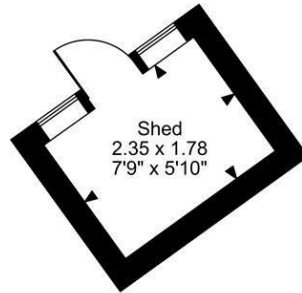
**EXTERNALLY**

Shed 7'8" x 5'10" (2.35m x 1.78m)

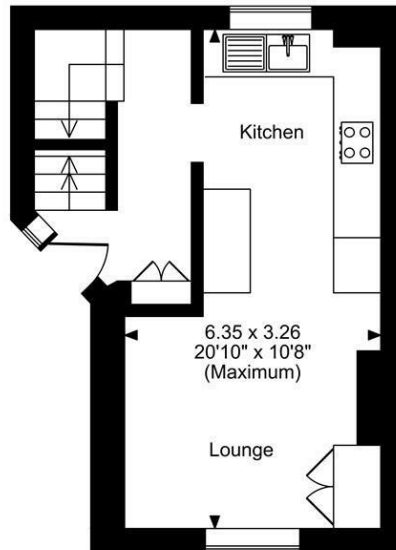


Page & Wells limited for themselves and for the vendors of this property whose agents they are give notice that: 1. These particulars do not constitute any part of, an offer or a contract. 2. All statements contained in these particulars as to this property are made without responsibility on the part of Page & Wells Limited or the Vendor. 3. None of the statements contained in these particulars as to the property is to be relied on as statements or representations of fact. 4. Any intending purchaser must satisfy himself by inspection or otherwise as to the correctness of each of the statements contained in these particulars. 5. The vendor does not make or give, and neither Page & Wells Limited nor any person in their employment has any authority to make or give any representation whatsoever in relation to this property. These particulars are supplied on the understanding that all negotiations are carried out throughout Page & Wells Limited. Properties with a reference prefixes EAA are those which Page & Wells Limited disclose an interest in accordance with the provisions of the Estates Agents Act 1979

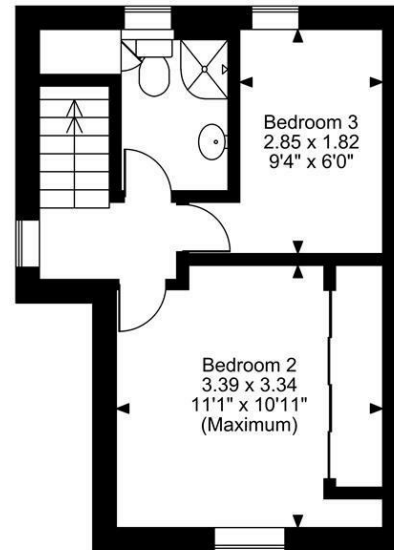
**Cape Cottages, Church Street, Loose, Maidstone, Kent**  
**Approximate Gross Internal Area**  
**Main House = 683 Sq Ft/63 Sq M**  
**Shed = 45 Sq Ft/4 Sq M**  
**Total = 728 Sq Ft/67 Sq M**



**Lower Ground Floor**



**Ground Floor**



**First Floor**

**FOR ILLUSTRATIVE PURPOSES ONLY - NOT TO SCALE**

The position & size of doors, windows, appliances and other features are approximate only.

© ehouse. Unauthorised reproduction prohibited. Drawing ref. dig/8639047/LCO

