



Orville Road, SW11

£5,500 Per calendar month

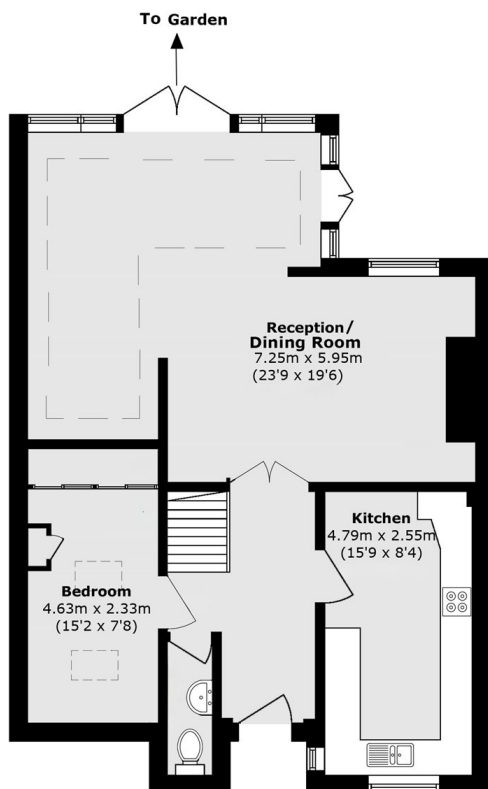
This four bedroom terraced house situated near Battersea square has been meticulously designed with a clean modern finish throughout. Including four bedrooms, two bathrooms with a separate w/c, large open plan reception room/dining room, a spacious eat in kitchen with a south east facing private garden.

Orville Road is located in Battersea. With several nearby primary and secondary school options like Thomas's Battersea primary school and Harris academy. It is positioned near Battersea Square and the River Thames, roughly a 5-minute walk from Battersea Bridge Road and a 15-minute walk from Clapham Junction station.

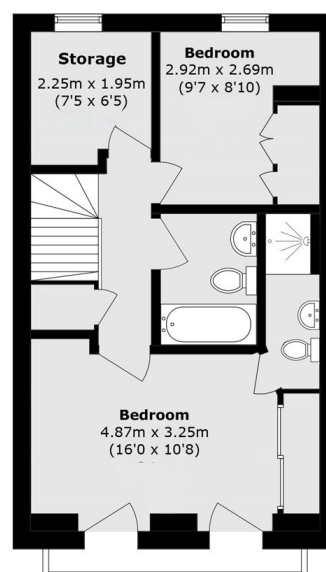
Features

- Four Double Bedrooms
- Transport Links
- Open plan
- Conservatory
- Garden
- House

Orville Road, London, SW11



Ground Floor



First Floor

Total area (approx.): 113.7sq. m (1223.8sq. ft)