



Drewstead Road, SW16

£250,000

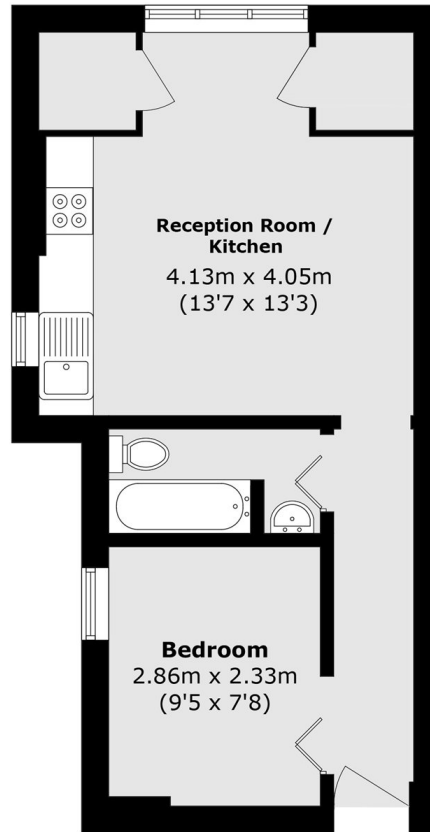
Situated on a charming and quiet street, this top floor one double bedroom home is filled with natural light throughout. The open-plan living space features a modern kitchen, creating a bright and inviting atmosphere. Further benefits include the property being offered with no onward chain.

Drewstead Road is a highly sought-after, tree-lined street ideally positioned to enjoy everything Streatham Hill has to offer. Tooting Common sits at the end of the road, while Balham High Road and access to the Northern Line are just a short distance away. Streatham Hill mainline station provides excellent rail connections, and frequent bus routes to Brixton town centre are all within easy walking distance.

Features

- Sought After Location
- Top Floor
- One Double Bedroom
- Open Plan Living
- Modern Kitchen
- Chain Free

Drewstead Road, London, SW16



Total area (approx.): 31.9 sq. m (343.3 sq. ft)