

Redcliffe Close, SW5

£550,000

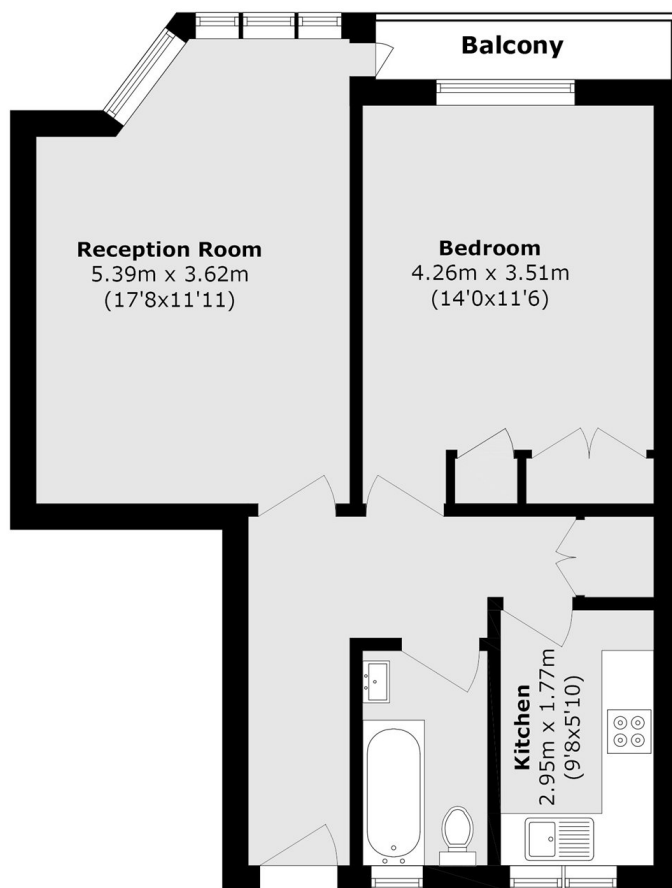
The property offers spacious and well-designed accommodation, including a generously sized and bright living area. Residents also benefit from the convenience of an on-site porter, adding an extra layer of comfort and security. Conveniently, the service charge covers costs for heating and water which is an added bonus.

Redcliffe Close is ideally located for all the shops, bars and restaurants offered on Old Brompton Road and the surrounding areas. Earls Court Station is within close proximity.

Features

- Access To Bike Shed
- Second Floor
- Communal Gardens
- Porter
- Lift
- Chain Free

Redcliffe Close, London, SW5



Total area (approx.): 53.6 sq. m (577.0 sq. ft)

Balcony area (approx.): 2.7 sq. m (29.1 sq. ft)