



Brighton Road, KT6

£3,395 Per calendar month

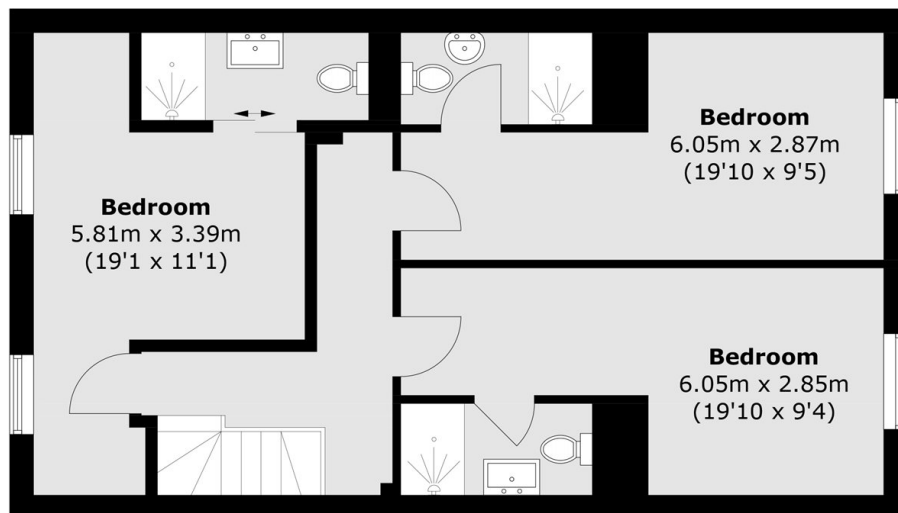
This beautifully refurbished home offers generous living space, thoughtfully designed for modern comfort. The property features a bright open-plan reception area and three double bedrooms, each with its own bathroom. A private garden provides the perfect setting for outdoor relaxation and entertaining, and a high-quality finish throughout.

Brighton Road is in the heart of Surbiton, off Portsmouth Road which runs along the idyllic River Thames and less than half a mile away from Surbiton train station and high street.

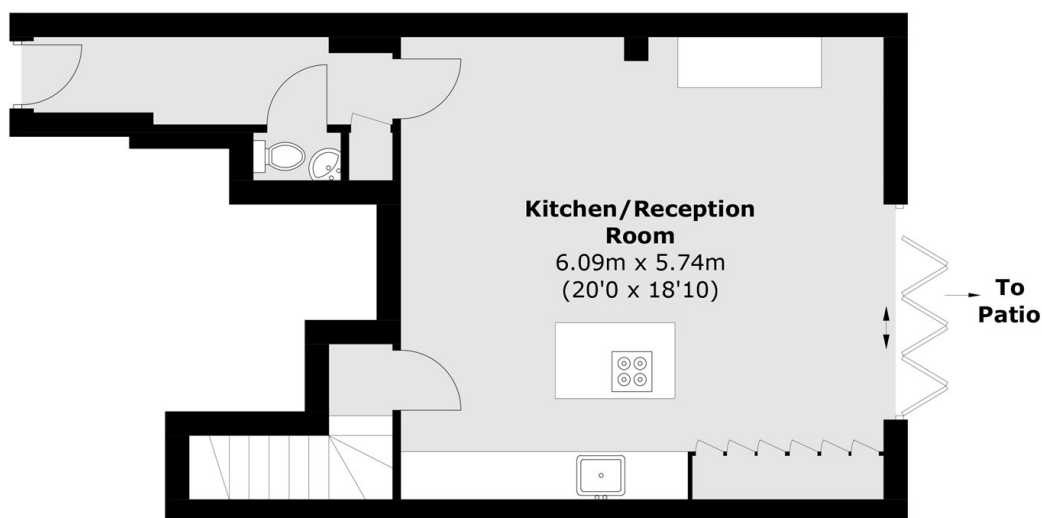
Features

- Recently Refurbished
- Three Bedrooms
- Three Bathrooms
- Private Garden
- Open Plan
- Central Location

Brighton Road,
Surbiton, KT6



First Floor



Ground Floor

Total area (approx.): 106.7 sq. m (1,148.5 sq. ft)