



Streatham High Road, SW16

£375,000

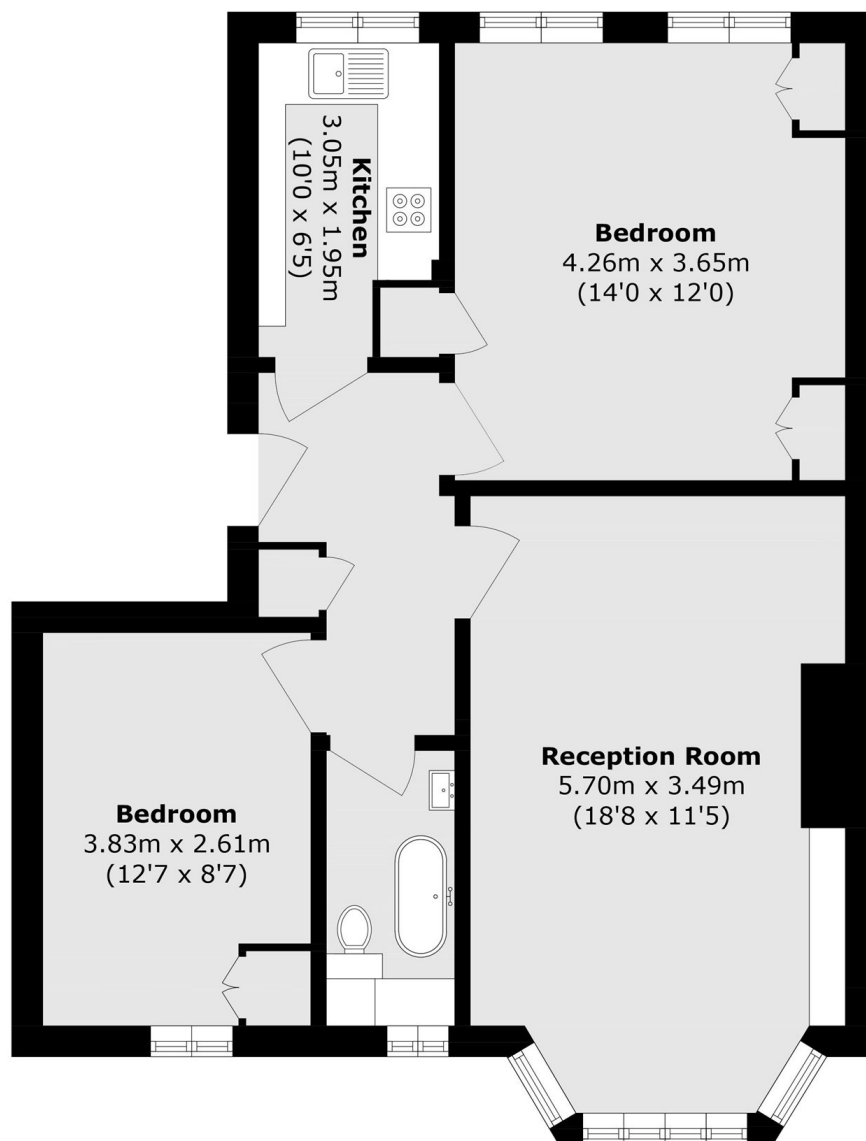
OFFERS OVER Set within a desirable mansion block in the heart of Streatham, this two double bedroom apartment offers over 695 sq ft of living space, a separate kitchen and a generous reception room.

Perfectly positioned on Streatham High Road, The High benefits from close proximity to both Streatham Hill and Streatham mainline stations, along with numerous bus routes, offering quick and easy access to Brixton.

Features

- Two Double Bedrooms
- Convenient Location
- Over 695 Sq Ft
- South After Location
- Large Living Space
- Separate Kitchen

Streatham High Road, London, SW16



Total area (approx.): 64.6 sq. m (695.3 sq. ft)