



FOR SALE

Offers in Excess of £280,000

6 Tudor Rose Court South Parade,
Southsea, PO4 0DE.

Tenure: Leasehold

ESTATE  AGENTS

LAWSON ROSE

PROPERTY DESCRIPTION

Lawson Rose are truly delighted to bring to the market this beautifully presented and exceptionally well-proportioned retirement apartment, ideally situated within the highly regarded and much sought-after Tudor Rose Court in the heart of Southsea. This elegant apartment offers a bright and airy open-plan living/kitchen space, perfectly designed for modern, low-maintenance living. The room is flooded with natural light and provides direct access onto a private balcony, where you can enjoy far-reaching sea views—an ideal spot for a morning coffee or a quiet evening unwind. The accommodation further comprises a generous storage cupboard, two well-proportioned double bedrooms, with the principal bedroom benefitting from its own walk-in wardrobe, adding a real touch of luxury and practicality. There is also a contemporary fitted shower room, complemented by a separate W/C for added convenience. Tudor Rose Court is renowned for offering an outstanding standard of retirement living, combining comfort, security and a strong sense of community. Residents benefit from lift and wheelchair access throughout, an emergency call system for complete peace of mind, and attentive on-site management. The development also features a beautifully maintained residents' lounge, perfect for socialising, along with an attractive bistro-style restaurant, providing a wonderful space to dine and connect with neighbours. Offered with no forward chain, this superb apartment presents a fantastic opportunity for those seeking a relaxed and secure coastal lifestyle in one of Southsea's most desirable developments. We would highly recommend an internal viewing to fully appreciate the space, setting and lifestyle on offer. For further information or to arrange a viewing, please contact the Lawson Rose sales team on 02392 367779.

Material Information:

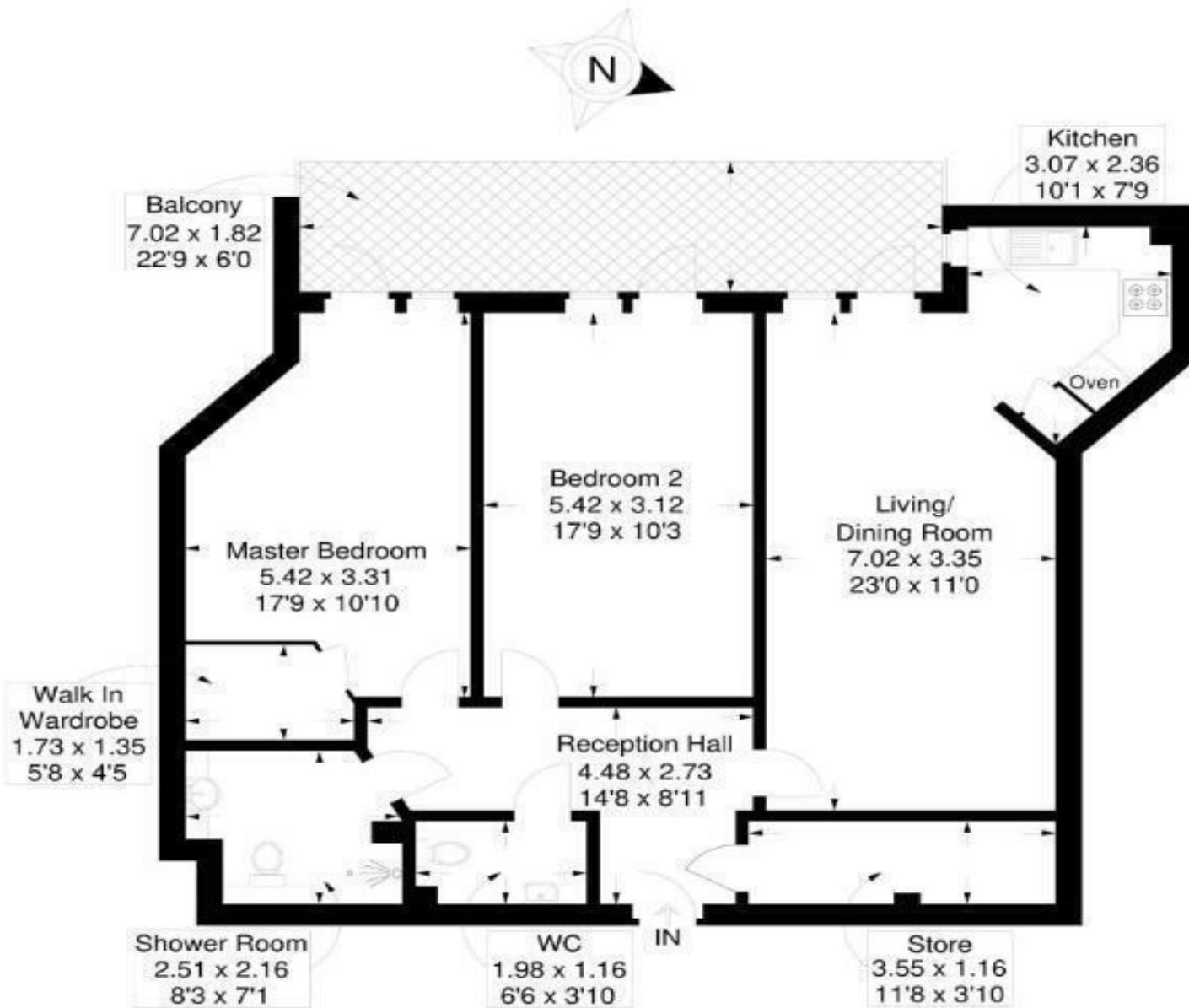
- Construction: Brick Built
- Electricity Supply: Alternating Current
- Heating: Gas Central Heating
- Water Supply: Mains Water Supply
- Sewage: Mains Sewage
- Broadband: Standard, Superfast Fibre and Gfast Fibre are available.
- Mobile: Ofcom Checker shows EE, Three, O2 and Vodafone all have voice and data availability in this area.
- Permit Parking: 1st permit is £30, 2nd permit is £120 and 3rd permit (where available) is £300.
- Council Tax: Portsmouth City Council – Band D
- Flood Risk – Low Risk (Stated on the Gov.uk portal)
- Leasehold –
- Retirement Property
- Term:
- Management Company: McCarthy Stone
- Service Charge: TBC
- Ground Rent: TBC





Tudor Rose Court, South Parade, Southsea

Approximate Gross Internal Area = 86.9 sq m / 936 sq ft



First Floor

This plan is for layout guidance only. Not drawn to scale unless stated. Windows and door openings are approximate. Whilst every care is taken in the preparation of this plan, please check all dimensions, shapes and compass bearings before making any decisions reliant upon them.

Please note that none of the services or appliances have been tested by Lawson Rose Estate Agents.