



BROADWATER RISE

Guildford, Surrey



A SUBSTANTIAL DETACHED FAMILY HOME SET WITHIN GLORIOUS GROUNDS ON ONE OF GUILDFORD'S MOST DESIRABLE ROADS

Summary of accommodation

Ground Floor: Reception hall | Drawing room | Family room | Kitchen/dining room | Study | Bedroom five/second study | Cloakroom

First Floor: Principal bedroom suite with shower room and dressing room | Three further bedrooms | Family bathroom

Garden and grounds: Established south-facing rear garden | Patio terrace spanning the back of the house
Detached garage | Summer house

In all about 0.435 acres

Distances: Guildford's Upper High Street 0.9 mile, London Road Station, Guildford 0.9 mile (from 47 minutes to London Waterloo), Guildford mainline station 1.6 miles (from 32 minutes to London Waterloo), A3 (northbound) 1.9 miles, A3 (southbound) 2.5 miles, M25 (Junction 10) 8.2 miles, Heathrow Airport 21.5 miles, Gatwick Airport 32.6 miles, Central London 34.8 miles
(All distances and times are approximate)

SITUATION

Broadwater Rise is widely regarded as one of Guildford's most sought-after residential addresses, positioned on the town's sunny south-eastern hillside and known for its generous plots, mature trees and tranquil atmosphere. Despite its peaceful setting, the property is conveniently located within easy reach of Guildford town centre, which offers a comprehensive range of shopping, restaurants, cultural amenities and leisure facilities.

Guildford mainline station provides fast and frequent services to London Waterloo, making the location ideal for commuters. The area is also particularly well placed for access to highly regarded state and independent schools, as well as beautiful open countryside, including the Surrey Hills Area of Outstanding Natural Beauty, with its extensive network of walks, bridleways and outdoor pursuits.

Excellent road connections via the A3 offer swift access to London, the M25, Heathrow and Gatwick airports, further enhancing the property's appeal as a long-term family home combining convenience, quality of life and enduring desirability.

Schools: Tormead, Guildford High School, George Abbot School, Royal Grammar School and Royal Grammar Preparatory School, St Peter's Catholic School, St Thomas of Canterbury Catholic School, Guildford County School, Pewley Down Infant School, Holy Trinity Junior School, Boxgrove Primary School, St Catherine's, Charterhouse, Aldro.

Amenities: G Live, Yvonne Arnaud Theatre, Pit Farm Tennis Club, Merrow Tennis Club, Surrey Sports Park, Spectrum Leisure Centre, Bramley Golf Club, West Surrey Golf Club, Guildford Golf Club, Worplesdon Golf Club.



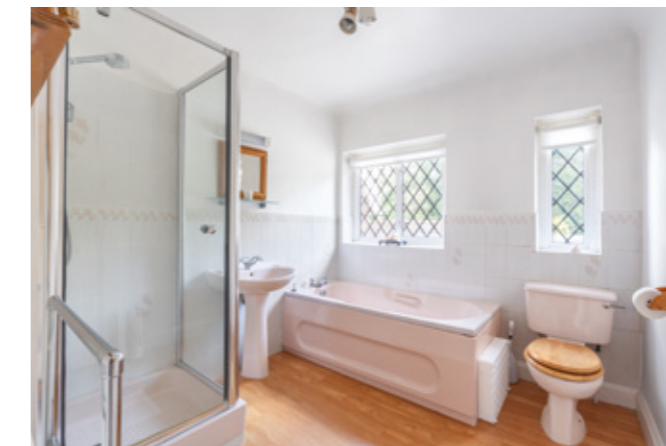
THE PROPERTY

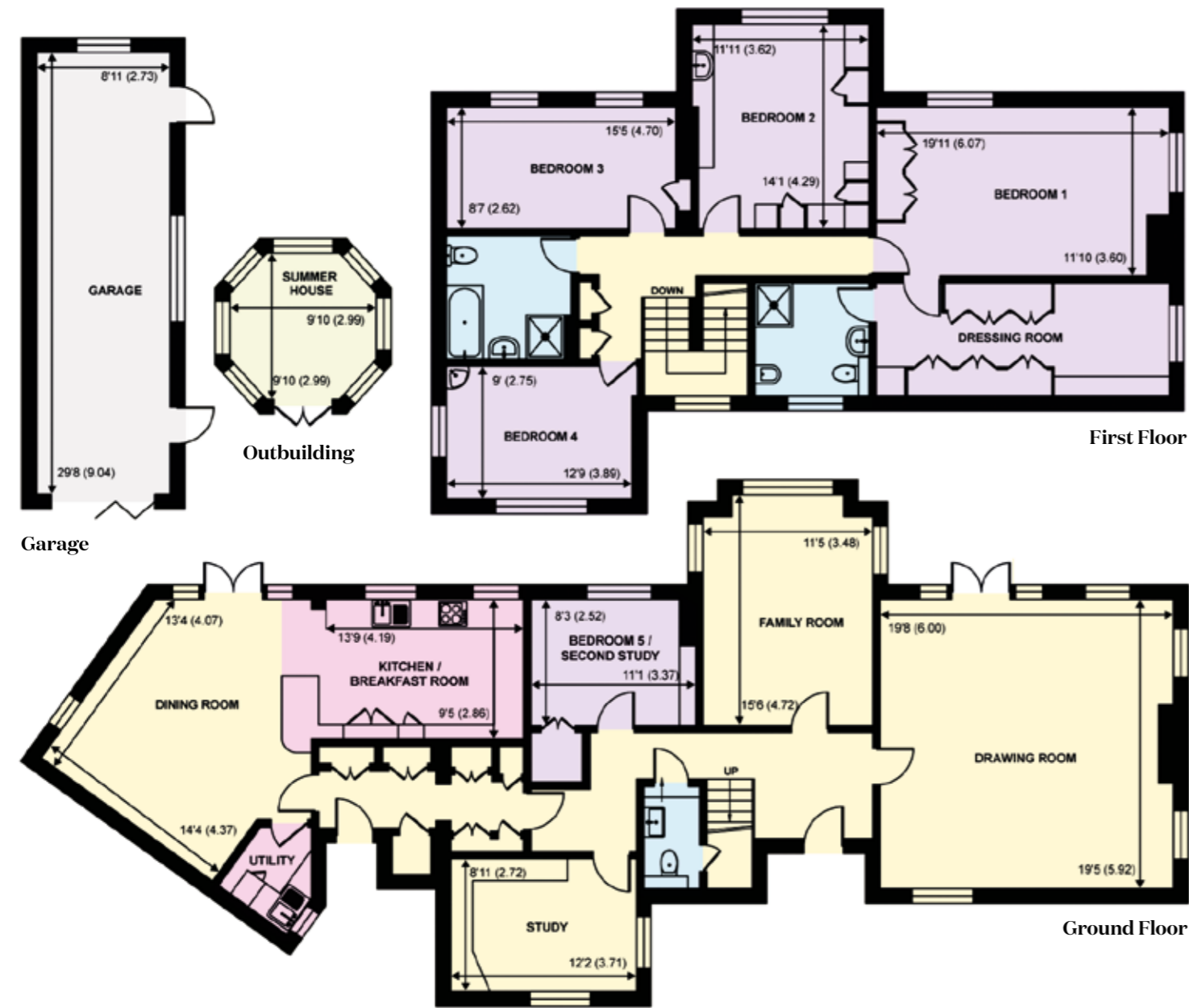
Occupying a generous and private plot on the favoured south-eastern slopes of Guildford, this attractive detached residence offers just under 3,000 sq ft of versatile accommodation surrounded by mature gardens that provide both seclusion and a delightful sense of space.

The house presents with classic architectural character, featuring tile-hung elevations under a pitched roof, complemented by leaded light windows and tall chimneys. Internally, the accommodation is well-balanced and ideal for modern family living, while also offering excellent scope for enhancement or adaptation, subject to the usual consents.

On the ground floor, a welcoming entrance hall leads to a generous drawing room, filled with natural light and ideal for entertaining or relaxing, alongside a comfortable family room offering further flexible living space. The kitchen/dining room, with underfloor heating, creates a natural hub for family meals and social gatherings, with French doors onto a sheltered patio. A bedroom on this level offers flexibility for guests or multigenerational living.

Upstairs, the first floor offers four well-sized bedrooms, including an impressive principal bedroom with en suite and dressing room. The remaining bedrooms are served by a family bathroom.





- Reception
- Bedroom
- Bathroom
- Kitchen/Utility
- Storage
- Outside

Approximate Gross Internal Area = 2593 sq ft / 240.8 sq m
Garage = 266 sq ft / 24.7 sq m
Outbuilding = 83 sq ft / 7.7 sq m
Total = 2942 sq ft / 273.2 sq m

This plan is for layout guidance only. Not drawn to scale unless stated. Windows and door openings are approximate. Whilst every care is taken in the preparation of this plan, please check all dimensions, shapes and compass bearings before making any decisions reliant upon them.



We would be delighted
to tell you more.

James Ackerley
01483 617920
james.ackerley@knightfrank.com

Knight Frank Guildford
2-3 Eastgate Court, High Street
Guildford GU1 3DE

Tim Chapman
01483 963880
tim.chapman@knightfrank.com

[knightfrank.co.uk](https://www.knightfrank.co.uk)

Your partners in property

1. Particulars: These particulars are not an offer or contract, nor part of one. You should not rely on statements given by Knight Frank in the particulars, by word of mouth or in writing ("information") as being factually accurate about the property, its condition or its value. Neither Knight Frank nor any joint agent has any authority to make any representations about the property, and accordingly any information given is entirely without responsibility on the part of Knight Frank. 2. Material Information: Please note that the material information is provided to Knight Frank by third parties and is provided here as a guide only. While Knight Frank has taken steps to verify this information, we advise you to confirm the details of any such material information prior to any offer being submitted. If we are informed of changes to this information by the seller or another third party, we will use reasonable endeavours to update this as soon as practical. 3. Photos, Videos etc: The photographs, property videos and virtual viewings etc. show only certain parts of the property as they appeared at the time they were taken. Areas, measurements and distances given are approximate only. 4. Regulations etc: Any reference to alterations to, or use of, any part of the property does not mean that any necessary planning, building regulations or other consent has been obtained. A buyer must find out by inspection or in other ways that these matters have been properly dealt with and that all information is correct. 5. Fixtures and fittings: A list of the fitted carpets, curtains, light fittings and other items fixed to the property which are included in the sale (or may be available by separate negotiation) will be provided by the Seller's Solicitors. 6. VAT: The VAT position relating to the property may change without notice. 7. To find out how we process Personal Data, please refer to our Group Privacy Statement and other notices at <https://www.knightfrank.com/legals/privacy-statement>.

Particulars dated May 2026. Photographs and videos dated May 2026. All information is correct at the time of going to print. Knight Frank is the trading name of Knight Frank LLP. Knight Frank LLP is a limited liability partnership registered in England and Wales with registered number OC305934. Our registered office is at 55 Baker Street, London W1U 8AN. We use the term 'partner' to refer to a member of Knight Frank LLP, or an employee or consultant. A list of members names of Knight Frank LLP may be inspected at our registered office. If you do not want us to contact you further about our services then please contact us by either calling 020 3544 0692, email to marketing.help@knightfrank.com or post to our UK Residential Marketing Manager at our registered office (above) providing your name and address. Brochure by wordperfectprint.com