



Walton Street, SW3

£807 Per week

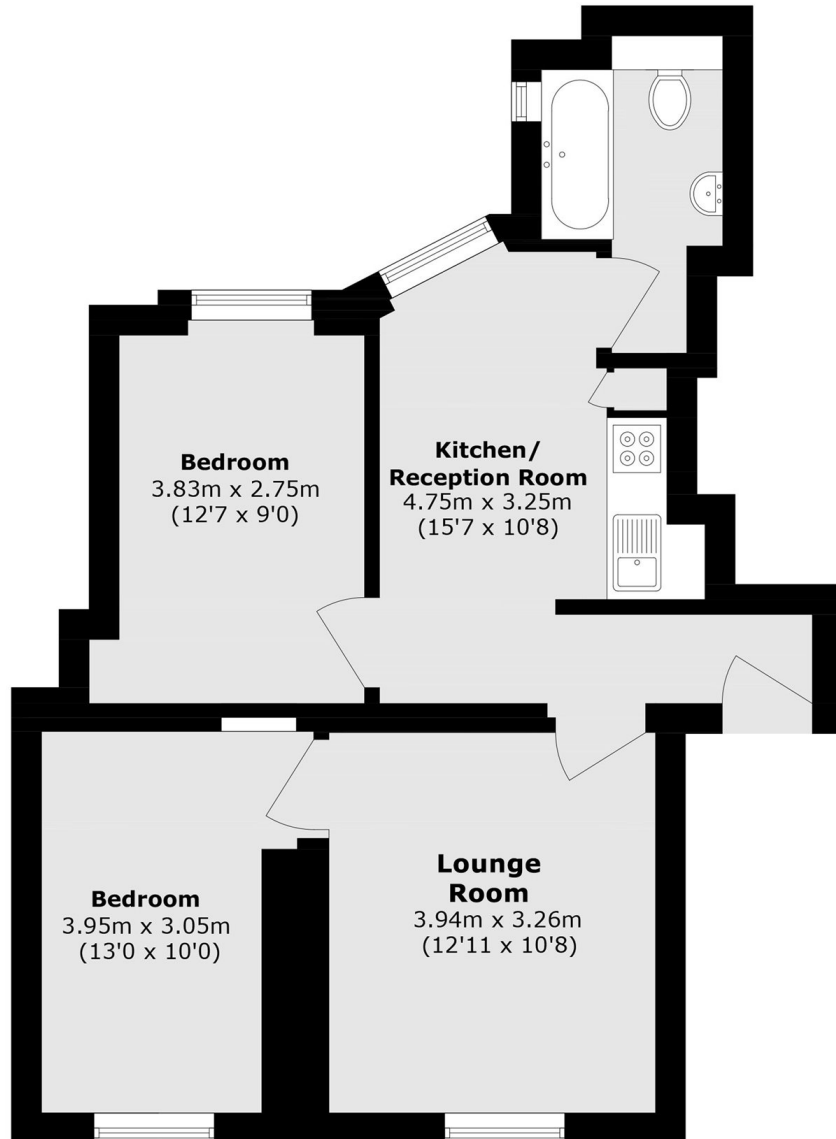
A stylish and contemporary two bedroom lateral apartment, situated within a secure and desirable portered building on Walton Street. It offers elegant double bedrooms, a spacious lounge and modern eat-in kitchen. Located only a short walk from South Kensington underground station and King's Road.

The Marlborough is a popular secure gated development with its own on-site porter and exquisite courtyard. Situated in the heart of Chelsea close to exclusive boutiques and restaurants on Walton Street & the King's Road.

Features

- Porter
- Gated Development
- Separate Kitchen
- Furnished
- Wooden Flooring
- Two Bedrooms

Walton Street, London, SW3



Fourth Floor

Total area (approx.): 51.2 sq. m (551.1 sq. ft)