

7 Cottage Meadow Way, £255,000

(Other charges apply)

RICHMOND
VILLAGES

Part of Bupa

SF

1



1



EPC - C



1 bedroom second floor apartment

A spacious, second floor, one bedroom apartment with lift access. At 837 sqft (77.8sqm), the accommodation comprises an entrance hall, large living room with triple aspect, modern fitted kitchen, main bedroom with dressing room en-suite shower room. The apartment is situated close to the main village centre and village facilities and the property is available with no upward chain.

Specification

- Spacious and bright living room with South, West and North facing aspects. French doors leading to balcony. Modern remote controlled electric fire and surround.
- Modern fitted kitchen with granite worktops, under cupboard lighting and built-in Neff appliances including electric oven and hob, fridge/freezer and dishwasher.
- Large main bedroom with fitted wardrobes.
- Dressing room with double glazed skylight window.
- En-suite shower room with walk-in shower and fully fitted white suite.
- Entrance hall with large storage cupboard and utility cupboard with Bosch washing machine and Bosch tumble dryer.
- Central heating radiators in all rooms. TV and satellite points*.
- Well stocked flower borders and lawns maintained by the Village Gardeners.
- Allocated parking space for one car.



*Satellite subscription not included.

Important Notice: These particulars are intended to give a fair and substantially correct overall description. Other fees and charges apply, please contact the Village Advisers for further details. Properties are sold on a 125 year lease and this property has 119 years remaining.

01332 794300

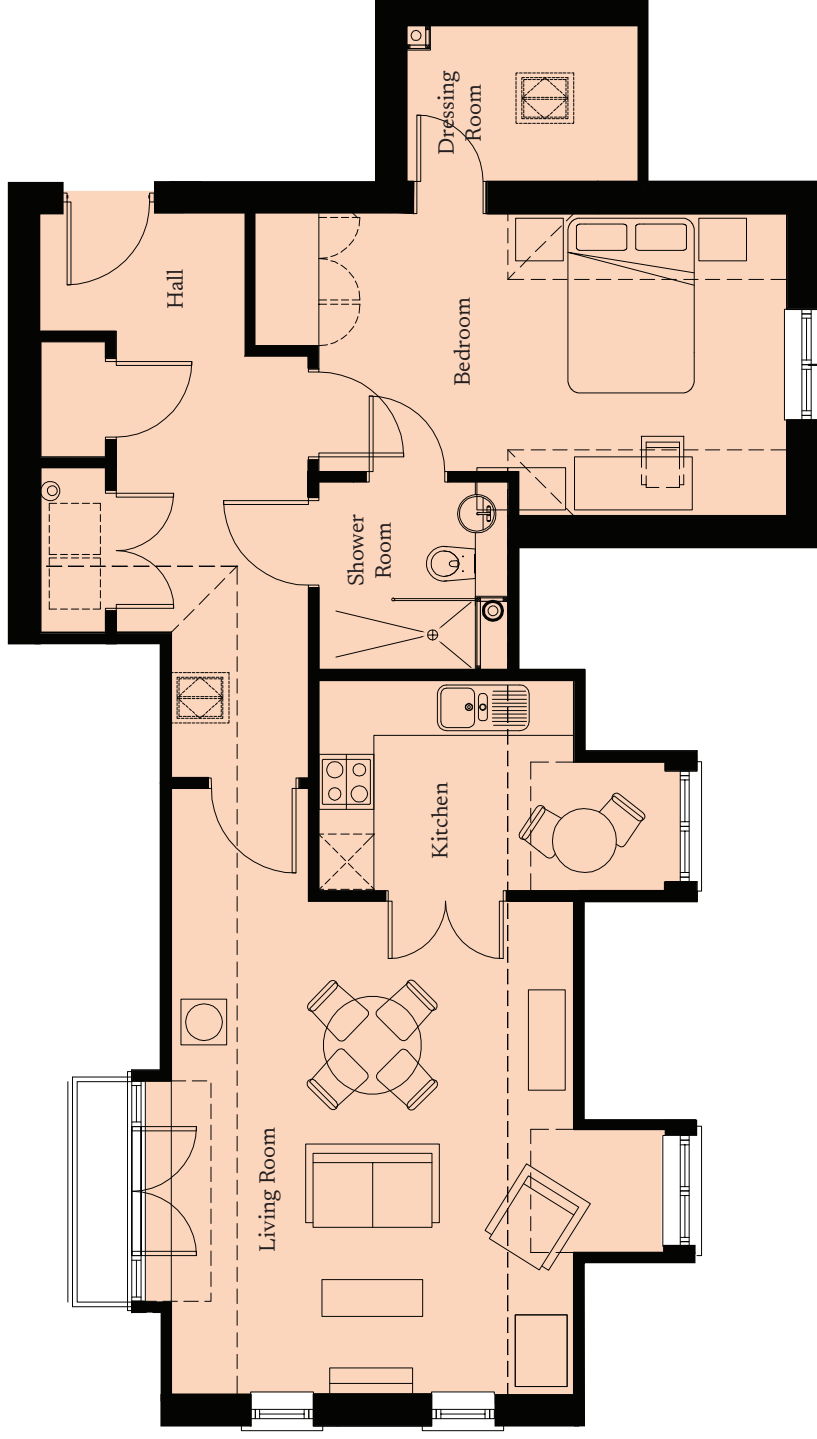
astonontrent@richmond-villages.com

Richmond Villages Aston-on-Trent,
Richmond Drive, Aston-on-Trent, Derbyshire DE72 2EA

7 Cottage Meadow Way

Second Floor | 77.8m² – 837ft²

- Kitchen**
3780mm x 2295mm
12'4" x 7'6"
- Living Room**
5722mm x 5388mm
18'9" x 17'8"
- Bedroom**
5810mm x 3300mm
19'1" x 10'10"
- Dressing Room**
1900mm x 1700mm
6'2" x 5'7"
- Shower Room**
2063mm x 2047mm
6'9" x 6'9"



These particulars are intended to give a fair and substantially correct overall description.

Measurements have been taken at 1500mm ceiling height.

All dimensions are approximate. Bedroom measurements include the wardrobe if applicable. Room measurements include bay windows if applicable.

Furniture layout is to give an indicative impression. Although all efforts have been made to ensure its accuracy at time of print dimensions, fixtures, fittings, finishes and specifications are subject to change without notice.

The properties are sold unfurnished.

