



## Addiscombe Road, Crowthorne, Berkshire RG45 7JU

£525,000

2 1 2



Boasting character and modern comfort, this charming two-bedroom character home on Addiscombe Road offers nearly 1,000 sq. ft of living space and is situated in a desirable Crowthorne location, close to the High Street and Edgbarrow secondary school.

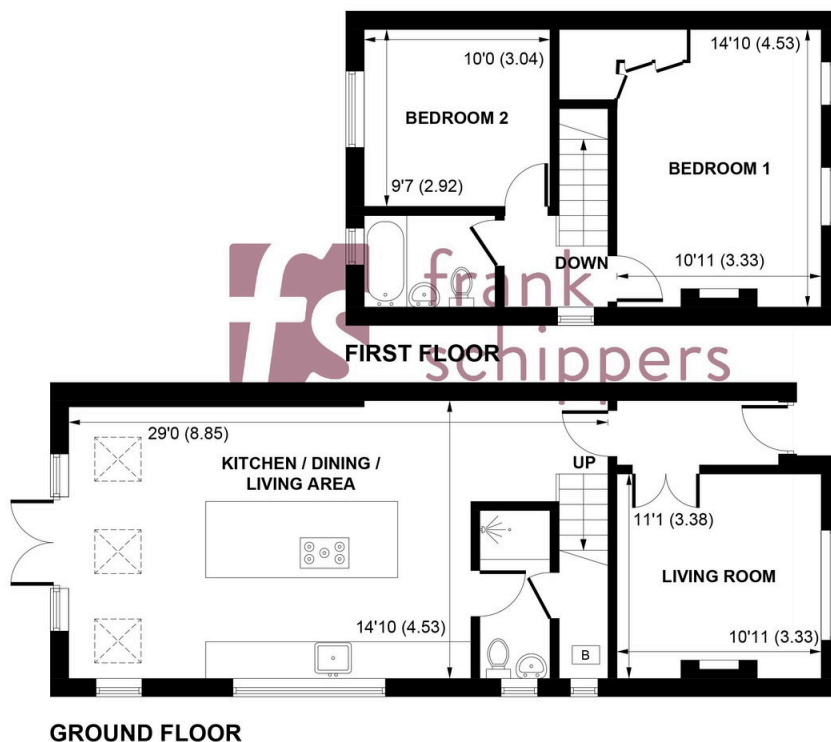


## Key Features

- Boasting character and modern comfort, a charming two-bedroom character home on Addiscombe Road.
- A welcoming reception room with log burner, perfect for relaxation or entertaining.
- Ground floor cloakroom.
- A large, south-facing garden, providing abundant space.
- EPC rating C
- Offering nearly 1,000 sq. ft of living space and is situated in a desirable Crowthorne location.
- A 29' by 14' living/dining room with a modern kitchen.
- Two double bedrooms and a first floor bathroom.
- No onward chain.
- Council tax band D - Bracknell Forest

### Addiscombe Road, Crowthorne

Approximate Gross Internal Area = 967 sq ft / 89.8 sq m



This plan is for layout guidance only. Not drawn to scale unless stated. Windows and door openings are approximate. Whilst every care is taken in the preparation of this plan, please check all dimensions, shapes and compass bearings before making any decisions reliant upon them. (ID 1284372)  
Produced by BlueSky Estate Agency Services on behalf of Frank Schippers