

Property ref: 178358

Stirling House, Reading, RG1 2SU

£1,550 PCM

HASLAM'S
Lettings



Offered to the market is this very well-presented and recently redecorated two bedroom apartment, within close proximity to Central Reading, Reading University and Royal Berkshire Hospital. This spacious apartment is located within a gated development and positioned on the 1st floor (please note - the building does not have a lift).

Reading Borough Council tax band C.

Located within the Article 4 area.

Available Now

- Two double bedrooms; Master with fitted wardrobes
- En-suite shower room to master bedroom; Further main bathroom
- Furnished; Fitted kitchen with appliances
- Electric heating; EPC rating C
- Gated development with an allocated parking space
- Managed by HASLAM'S

*Fees For Assured Shorthold Tenancies: when you rent a property from us you will be required to pay a sum equivalent to one weeks' rent for a holding deposit. Upon successful application, this amount will be off set against your first months' rent. You will also be required to pay a security deposit equivalent to 5 weeks' rent which will be held and protected in line with Deposit legislation. For more information about our fees please visit: www.haslams.net
Fees for all other tenancies (Non Housing Act Tenancies / Company Lets): when you rent a property from us we will charge you a one-off fee per property. This charge is the equivalent of 15 days of the monthly rental charge (+VAT) with a minimum fee of £450 (inc.VAT) up to a maximum of £650 (inc.VAT). Other fees may apply depending on your circumstances.

0118 960 1055

lettings@haslams.net www.haslams.net

Haslams Estate Agents Ltd, 159 Friar Street, Reading, Berkshire, RG1 1HE

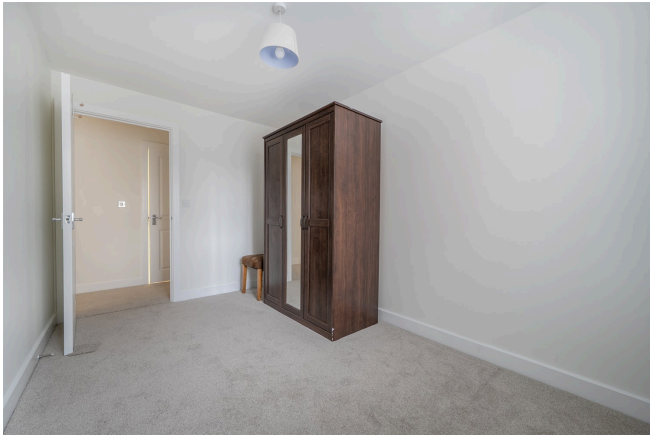
Water supply: Mains

Drainage info: Mains

Electricity supply: Mains

Broadband/Mobile Info: Connections available. For an indication of specific speeds and supply of Broadband and Mobile, we advise applicants go to the Ofcom website Broadband and Mobile Coverage Checker.

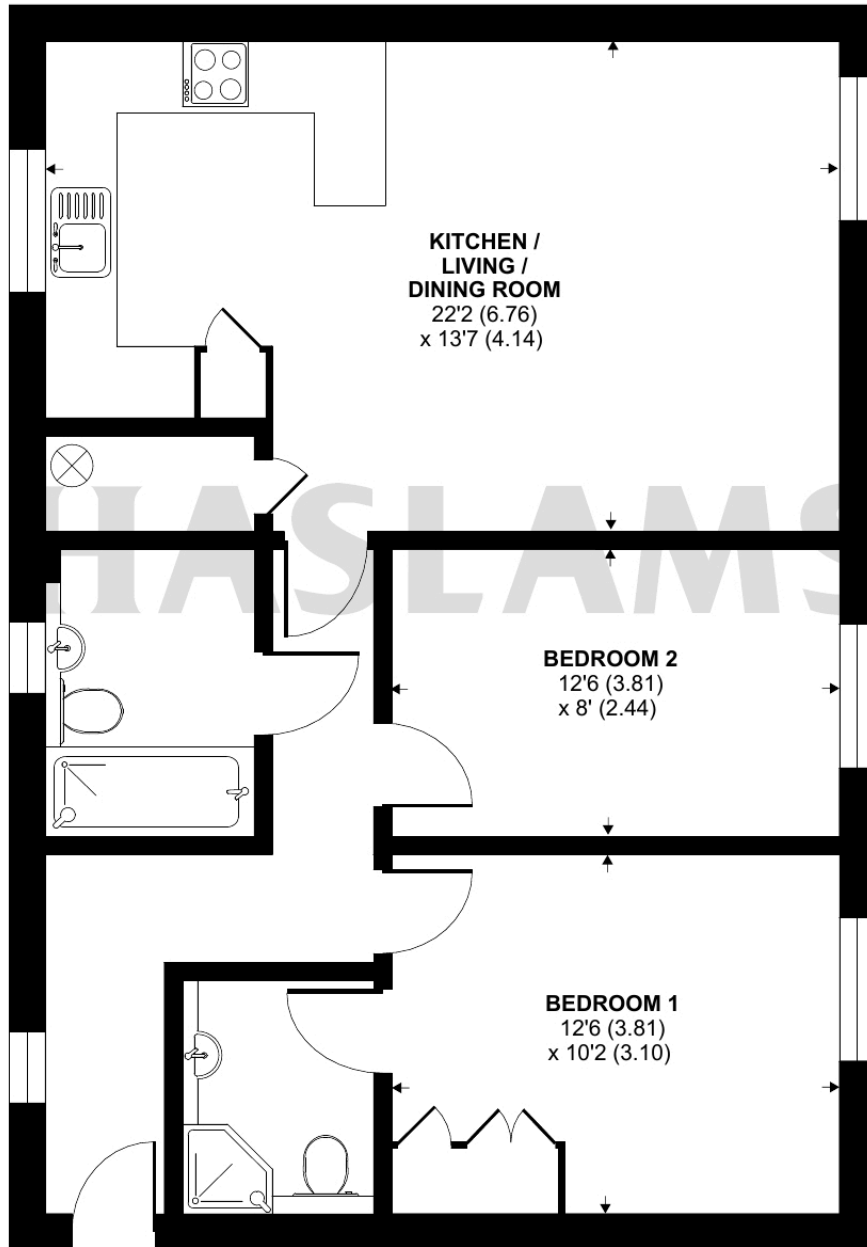




Silver Street, Reading, RG1

Approximate Area = 724 sq ft / 67.2 sq m

For identification only - Not to scale



FIRST FLOOR

 Floor plan produced in accordance with RICS Property Measurement 2nd Edition, Incorporating International Property Measurement Standards (IPMS2 Residential). © n̄checom 2026. Produced for Haslam's. REF: 1408486