

Starboard Way, E16

£525,000

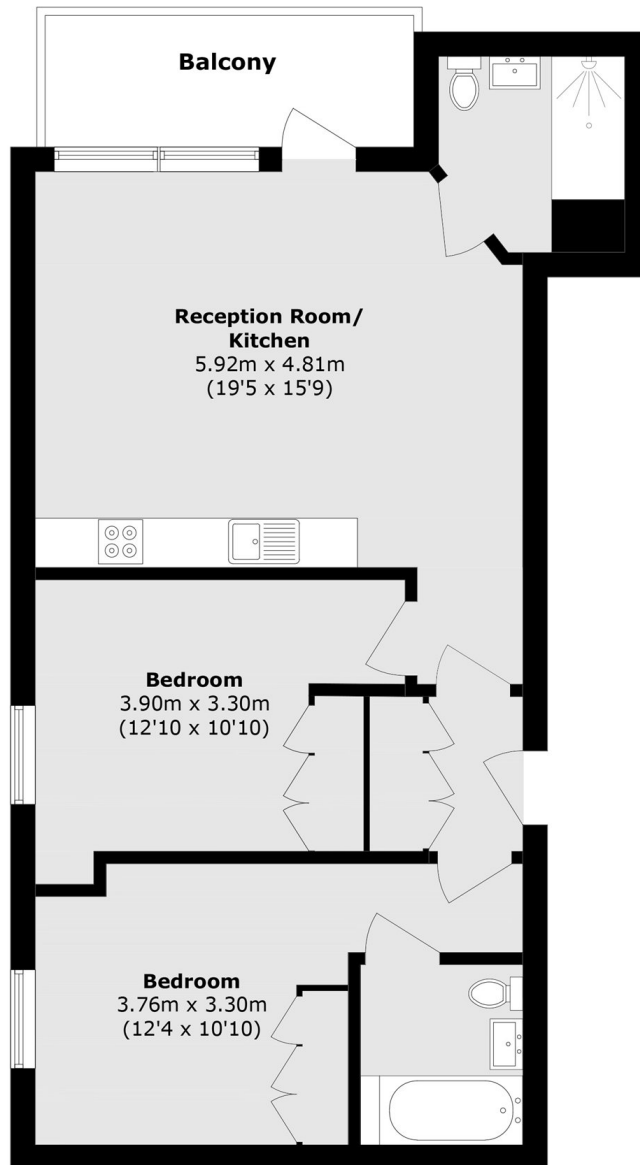
Offered to the market is this spacious two-bedroom apartment, set within the prestigious Royal Wharf development. The property features a modern, south-facing open-plan reception with views overlooking the river. Residents further benefit from exclusive on-site facilities and a 24-hour concierge service.

Corsair House is ideally situated between Pontoon Dock and Custom House DLR stations, offering quick and easy access to Canary Wharf and London City Airport.

Features

- 800 Square Feet
- Concierge services
- River views
- Secure Development
- Resident facilities
- Parking available

Starboard Way, London, E16



Total area (approx.): 74.4 sq. m (800.8 sq. ft)

Balcony area (approx.): 7.1 sq. m (76.4 sq. ft)