



**Guide Price**  
**£350,000**

**Freehold**

3x  2x  2x 

**Dove Close, Hythe,  
Kent, CT21**

**OVER 60?**

Secure this property  
for up to **59% less!**

*Wards*  
Helping you move forwards



## Main features

- Extended home with a very large kitchen/breakfast room
- Separate lounge and dining room
- 3 double bedrooms, 2 with large dressing rooms
- Large jack and jill bathroom accessed via bedrooms 2 and 3
- Separate shower room

## Accommodation

### SPLIT GROUND FLOOR

Entrance Hall

Kitchen/Breakfast Room: 26'6 x 7'11 (8.08m x 2.41m)

Lounge: 22'1 x 15'2 (6.74m x 4.63m)

Dining Room: 15'2 x 9'3 (4.63m x 2.82m)

### FIRST FLOOR

Landing

Bedroom 1: 12'11 x 9'2 (3.94m x 2.80m)

Bedroom 2: 11'10 x 9'4 (3.61m x 2.85m)

Dressing Area: 8'6 x 7'2 (2.59m x 2.19m)

Jack & Jill Bathroom: 8'5 x 4'8 (2.57m x 1.42m)

Bedroom 3: 13'6 x 8'6 (4.12m x 2.59m)

Dressing Room: 9'2 x 7'11 (2.80m x 2.41m)

Shower Room : 6'10 x 5'7 (2.08m x 1.70m)

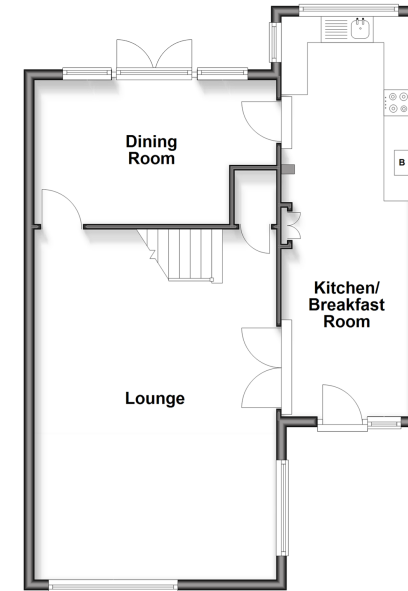
### OUTSIDE

Off Road Parking

Front & Rear Gardens

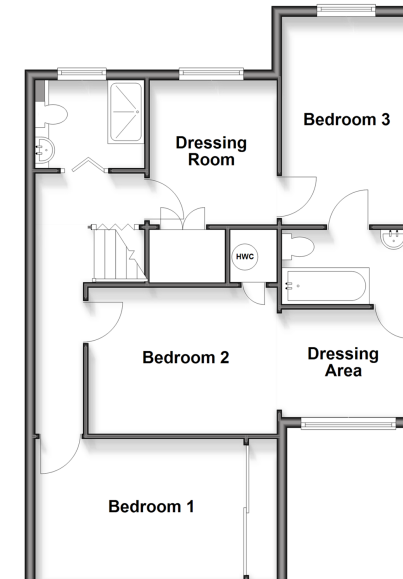
### Split Level Ground Floor

Approx. 64.0 sq. metres (689.3 sq. feet)



### First Floor

Approx. 64.0 sq. metres (689.3 sq. feet)



**Call Hythe - 01303 267473 ■ [wardsof Kent.co.uk](http://wardsof Kent.co.uk)**

- Legal advice should be taken to verify fixtures/fittings, planning, alterations and/or lease details
- Appliances & services are untested, dimensions are approximate and floor plans are not to scale
- Through a Homewise Home For Life Plan people aged 60+ can secure this property for up to 50% less, by purchasing a Lifetime Lease.



12825175/20251023/OH/MIB