

## Wellington Street , Central, Swindon

### Offers over £105,000



Leasehold | EPC rating: C | Council Tax Band: A

- Central location
- Lift access
- Light and airy throughout

# BELVOIR!

Property is personal

Email  
[swindon@belvoir.co.uk](mailto:swindon@belvoir.co.uk)

Phone  
**01793 542060**

## Description

NEW TO THE MARKET is this ideally located larger than average 1 bedroom apartment based in the heart of Swindon town centre, just minutes from the train and bus stations, this property benefits from spacious living throughout and a Juliet balcony in the bedroom.

The entrance hall leads through to large, light and airy rooms including a modern fitted kitchen, lounge/diner, bedroom with Juliet balcony and a bathroom with bath and shower. The property is naturally decorated throughout and the building benefits from a secured interlock door and lift.%

This property is leasehold and has a ground rent and service charge of approximately £1867.68 per year with 980 years left on the lease.

These particulars are issued in good faith but do not constitute representations of fact or form part of any offer or contract. The matters referred to in these particulars should be independently verified by prospective buyers or tenants. Neither Belvoir nor any of its employees or agents has any authority to make or give any representation or warranty whatever in relation to this property. FLOOR PLANS - The floorplans are intended as a guide only. This is NOT TO SCALE and dimensions are approximate. These particulars have been prepared for the guidance of intending purchasers but no guarantee of their accuracy is given, neither do they form a contract of any part thereof.

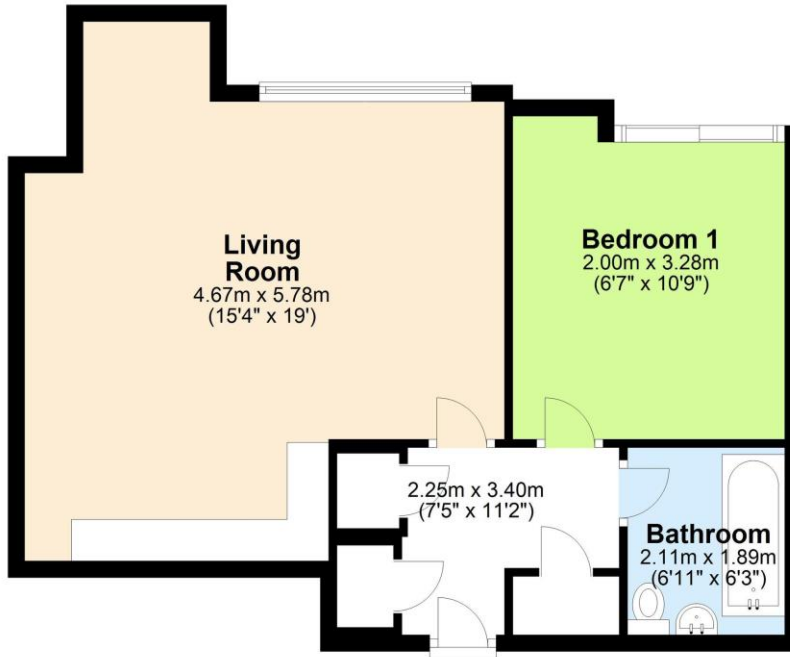
## Photographs



# Floorplan

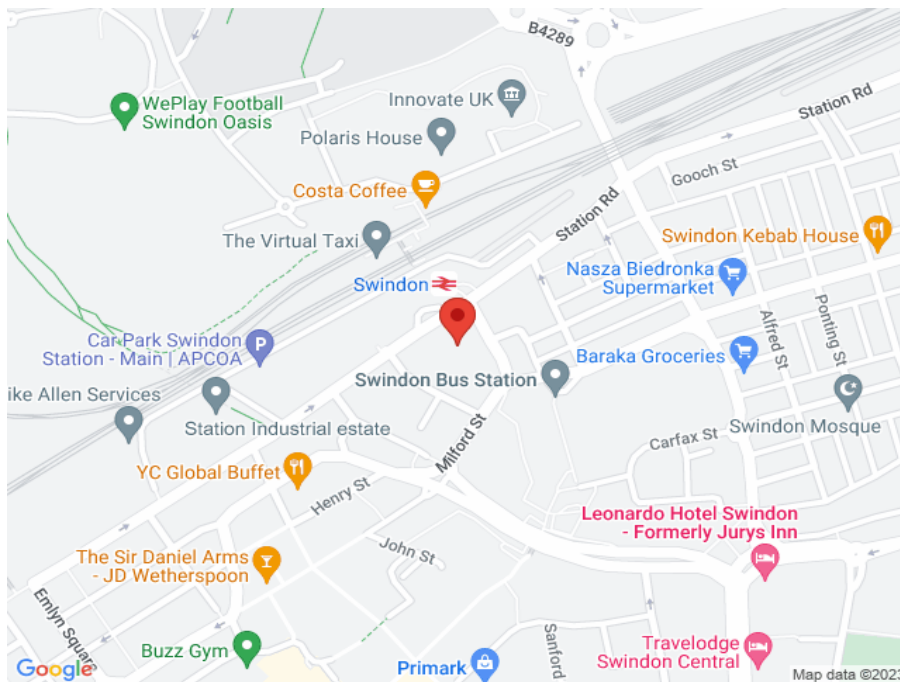
## Ground Floor

Approx. 55.2 sq. metres (594.5 sq. feet)



Total area: approx. 55.2 sq. metres (594.5 sq. feet)

# Map



[www.belvoir.co.uk/offices/swindon](http://www.belvoir.co.uk/offices/swindon)