



Palmers Road, E2

£700,000

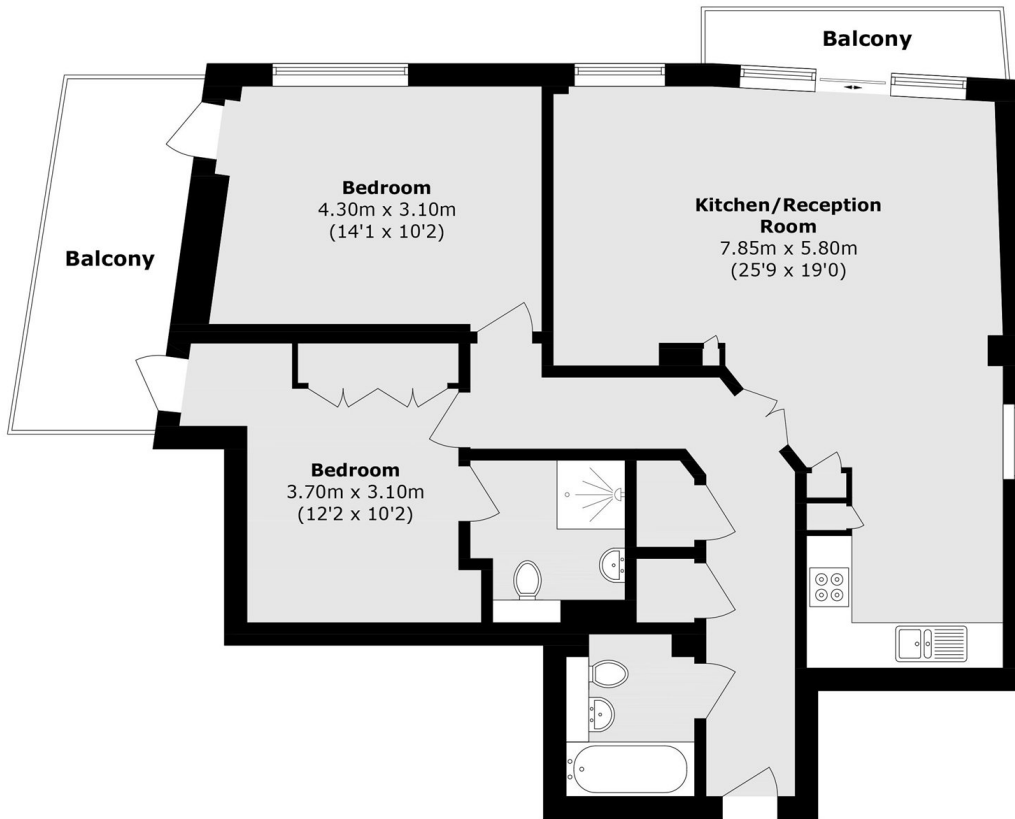
Two bedroom, two bathroom modern apartment with two balconies and panoramic views on the sought after Palmers Road. The apartment has a spacious open plan living room with ample space to dine and a fully integrated kitchen, this area leads out onto the apartments first private balcony with far-reaching views. The property has two double bedrooms, the principle bedroom has in-built wardrobes and is en-suite giving access to a wrap around balcony. The property has one secure underground parking space.

Set on the sought after Palmers Road, the property gives convenient access to the amenities found in the close by Roman Road, Bethnal Green and Bow which include an array of boutique shops, cafe's, pubs, restaurants and many other entertainment venues. The famous Victoria Park and Regents Canal are close by for tranquil walks and Bow Road, Bethnal Green and Cambridge Heath station are nearby.

Features

- Two bedrooms
- Two bathrooms
- Two private balconies
- Bright, modern interiors
- Secure underground parking space
- Panoramic views

Palmers Road, London, E2



Total area (approx.): 82.9 sq. m (892.3 sq. ft)
Balcony total (approx.): 11.8 sq. m (127.0 sq. ft)