



The Foxglove

3 bedroom semi-detached and terraced home with upstairs study and garage*



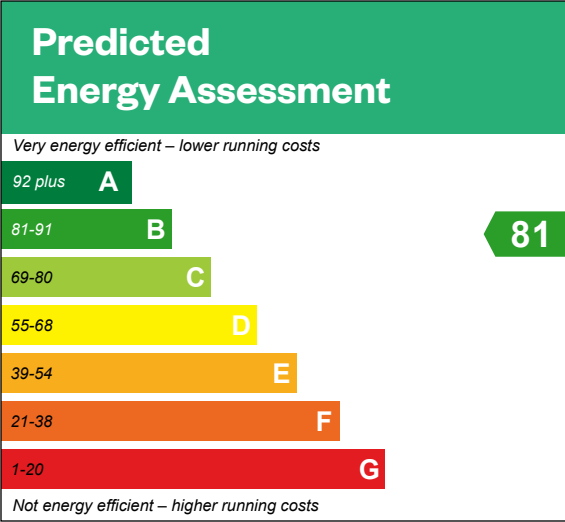
Computer generated image - The Foxglove

The Foxglove

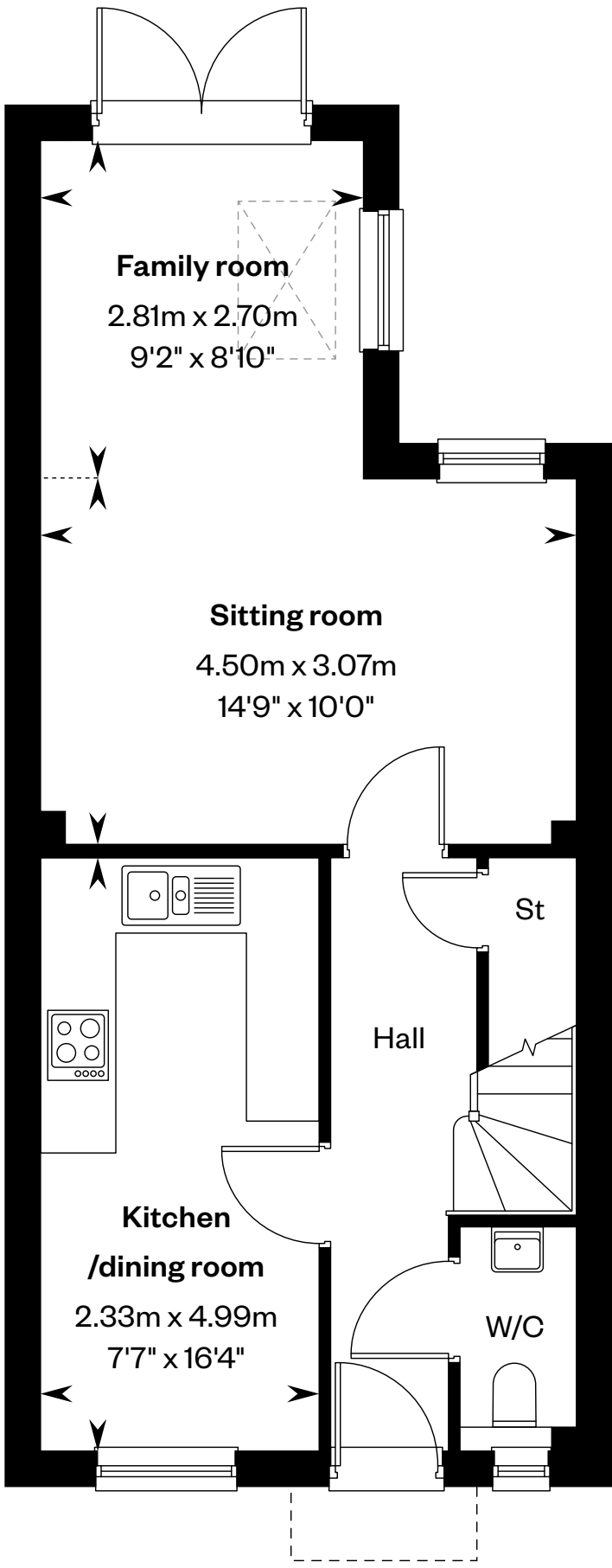
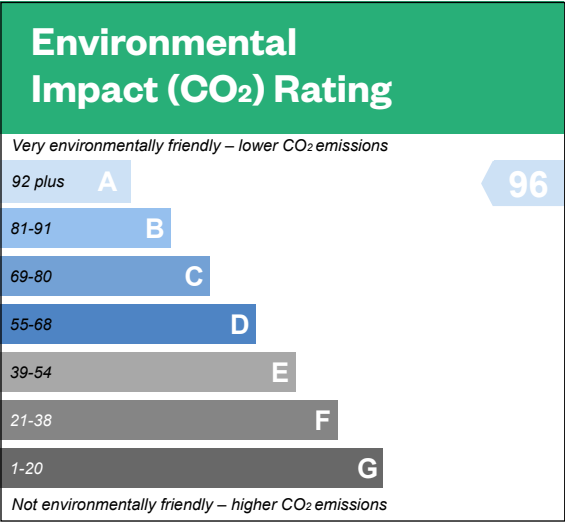
3 bedroom semi-detached and terraced home
with upstairs study and garage*

Plots 10, 15, 19, 82 & 140 – as shown

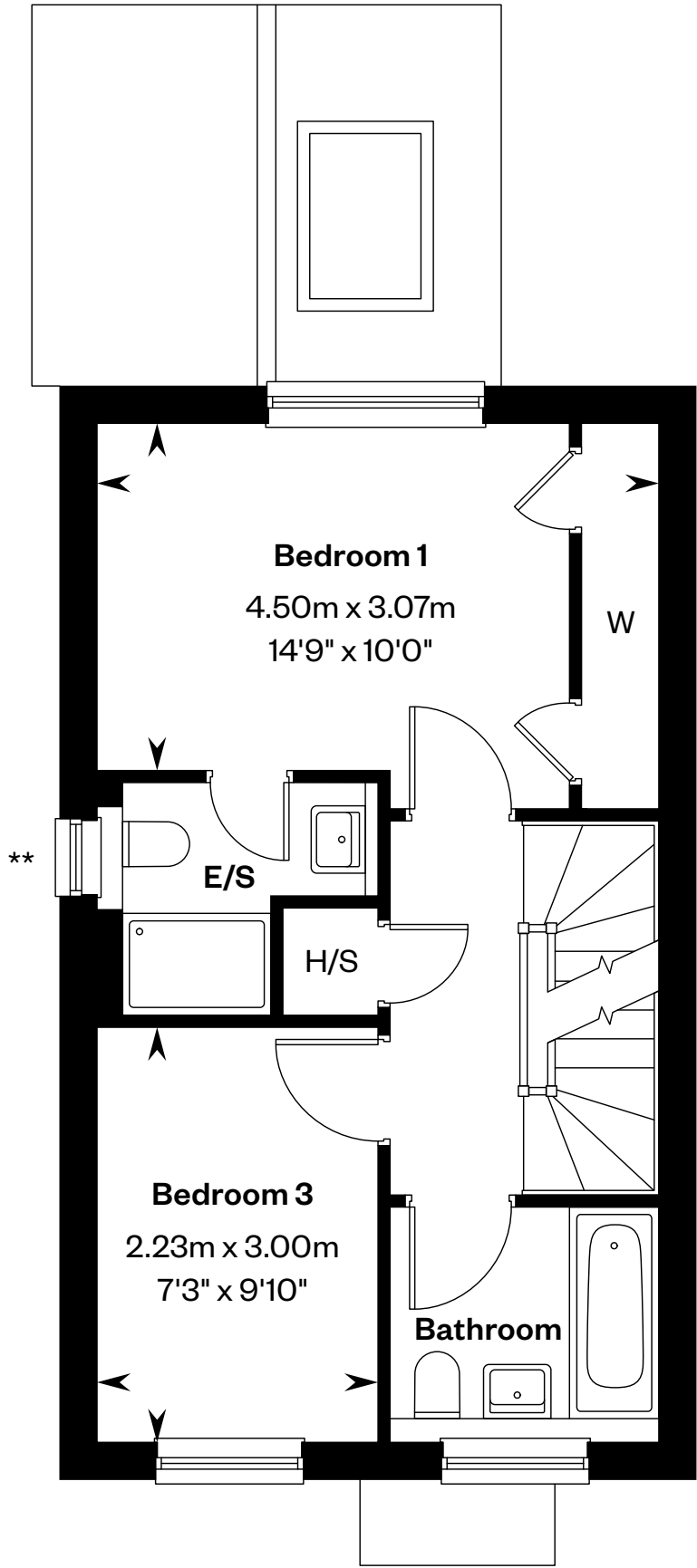
Plots 11, 16, 20, 83 & 139 – handed



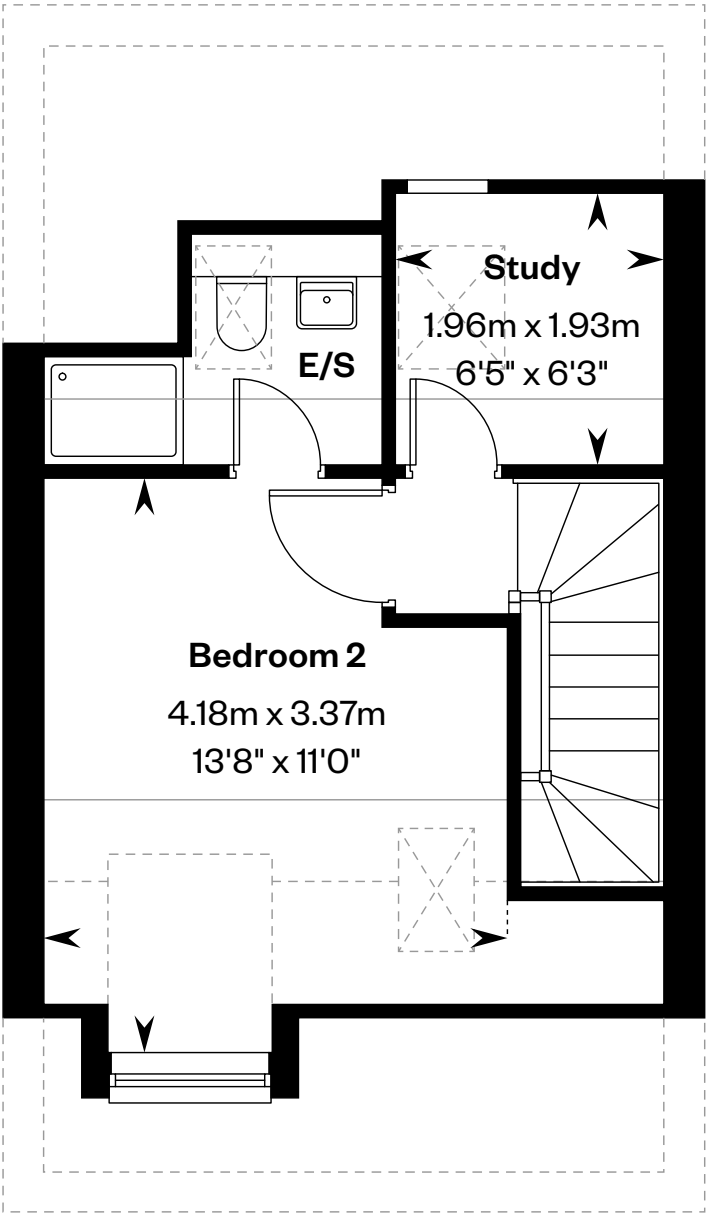
This is a Predicted Energy Assessment for properties that are incomplete. Once the property is completed, this rating will be updated and an official Energy Performance certificate will be created for the property.



Ground floor



First floor



Second floor

*Garage to plots 82 & 83. **Window omitted to plot 25. Please ask your Sales Consultant for further details.

E/S: En-Suite. H/S: Heating source cupboard. St: Store cupboard. W: Wardrobe. : Roof light. - - - -: Dotted lines denote reduced head height. —: Solid lines denote full head height.

IMPORTANT NOTICE TO CUSTOMERS: The Consumer Protection from Unfair Trading Regulations 2008. Cala Homes (North Home Counties) Limited operates a policy of continual product development and the specifications outlined in this brochure are indicative only. The computer generated images and photographs do not necessarily represent the actual finishings/elevation or treatments, landscaping, furnishings and fittings at this development. Information contained is accurate at date of publication on 18.09.25. See the main brochure for the full Consumer Protection statement.