



Connells

Ellys Road
Coventry



Property Description

This double bayed mid terrace property is situated in the popular residential area of Radford being close to Jubilee Crescent and within walking distance of Coventry City Centre. The property briefly comprises: ground floor shower room, lounge with bay window, open plan fitted kitchen/diner. reception room/bedroom with access to the spacious rear garden. On the first floor there are three bedrooms and fitted shower room. Externally there is a small foregarden and low maintenance rear garden.

Approach

Front door.

Entrance Hall

Radiator, laminate flooring.

Lounge

Double glazed bay window to the front elevation, radiator, television point and laminate flooring.

Reception Room/Bedroom

Double glazed window to the rear elevation and radiator.

Shower Room

Tiled, comprising shower cubicle, wash hand basin set into vanity unit, toilet.

Fitted Kitchen

Wall and base mounted units incorporating an inset single drainer stainless steel sink unit with work surfaces and tiled splashbacks over. Electric oven and electric hob with cookerhood over, plumbing for washing machine, space for domestic appliance, radiator, double glazed window to the rear & side elevations.

First Floor Landing

Doors to;

Bedroom One

Double glazed bay window & a further double glazed window to the front elevation, laminate flooring and radiator.

Bedroom Two

Double glazed window to the rear elevation, laminate flooring and radiator.



Bedroom Three

Double glazed window to the side elevation, laminate flooring and radiator.

Shower Room

Tiled, comprising shower cubicle, wash hand basin set into vanity unit, toilet, tiled flooring.

Outside

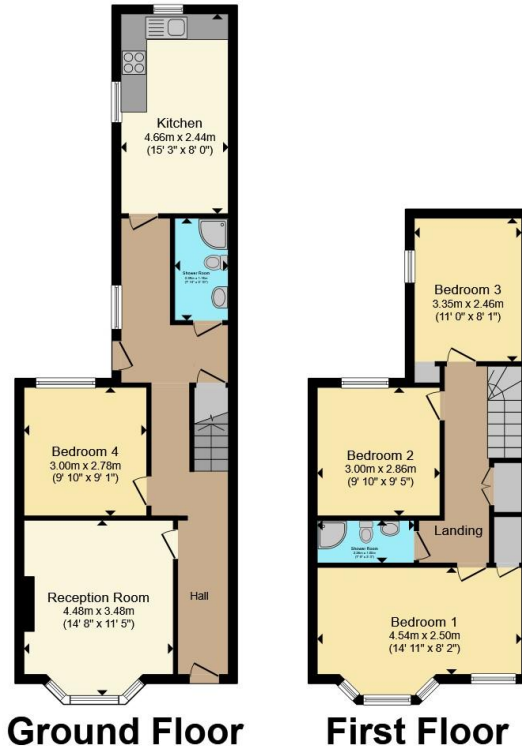
Front Of Property

Paved foregarden with access to front door.

Rear Garden

Paved low maintenance garden with outside shed.





Total floor area 97.1 m² (1,046 sq.ft.) approx

This floor plan is for illustrative purposes only. It is not drawn to scale. Any measurements, floor areas (including any total floor area), openings and orientation are approximate. No details are guaranteed, they cannot be relied upon for any purpose and they do not form part of any agreement. No liability is taken for any error, omission or misstatement. A party must rely upon its own inspection(s). Powered by www.propertybox.io



To view this property please contact Connells on

T 02476 553 093
E coventry@connells.co.uk

38 New Union Street
 COVENTRY CV1 2HN

EPC Rating: D Council Tax
 Band: A

view this property online connells.co.uk/Property/COV323440

Tenure: Freehold



1. MONEY LAUNDERING REGULATIONS Intending purchasers will be asked to produce identification documentation at a later stage and we would ask for your co-operation in order that there will be no delay in agreeing the sale. 2. These particulars do not constitute part or all of an offer or contract. 3. The measurements indicated are supplied for guidance only and as such must be considered incorrect. Potential buyers are advised to recheck measurements before committing to any expense. 4. We have not tested any apparatus, equipment, fixtures, fittings or services and it is in the buyers interest to check the working condition of any appliances.

Connells Residential is registered in England and Wales under company number 1489613, Registered Office is Cumbria House, 16-20 Hockliffe Street, Leighton Buzzard, Bedfordshire, LU7 1GN. VAT Registration Number is 500 2481 05.

See all our properties at www.connells.co.uk | www.rightmove.co.uk | www.zoopla.co.uk

Property Ref: COV323440 - 0003