





Property Description

Situated in a quiet and popular residential area of Goodman Park, this well-presented four-bedroom end-terrace house offers generous living accommodation ideal for growing families.

The property features a bright and spacious reception room, providing an excellent space for both everyday living and entertaining. The modern fitted kitchen offers ample storage and worktop space, with direct access to the rear garden. A ground-floor WC adds further practicality.

Upstairs, the home boasts four well-proportioned bedrooms, including a spacious principal bedroom, all served by a family bathroom.

The layout offers flexibility for home working, guest accommodation, or family life.

Externally, the property benefits from a private large rear garden with gated access for car parking along with the added advantage of being an end-terrace, providing extra privacy and natural light. On-street parking is available nearby along with nearby garage. End of terrace with room to the side for a double storey extension STPP

.Conveniently located close to local schools, shops, parks and excellent transport links, this attractive home combines space, comfort and a sought-after location, making it a fantastic opportunity for families and investors alike.

Entrance Porch

Tiled floor, door to

Entrance Hall

Radiator, tiled floor, stairs to first floor

Cloakroom

Front & side aspect windows, CW, wash hand basin, radiator, fully tiled

Lounge

Front aspect window, radiator

Dining Room

Radiator, wall mounted boiler, patio doors to rear garden

Kitchen

Rear aspect window, range of wall & base units, single bowl sink drainer with mixer tap & cupboard under, four ring gas hob with electric oven, plumbing for washing machine, space for fridge freezer

First Floor

Landing

Access to loft, airing cupboard, radiator

Bedroom One

Rear aspect window, radiator

Bedroom Two

Front aspect window, radiator

Bedroom Three

Side aspect window, radiator

Bedroom Four

Front aspect window, radiator

Outside

To The Front

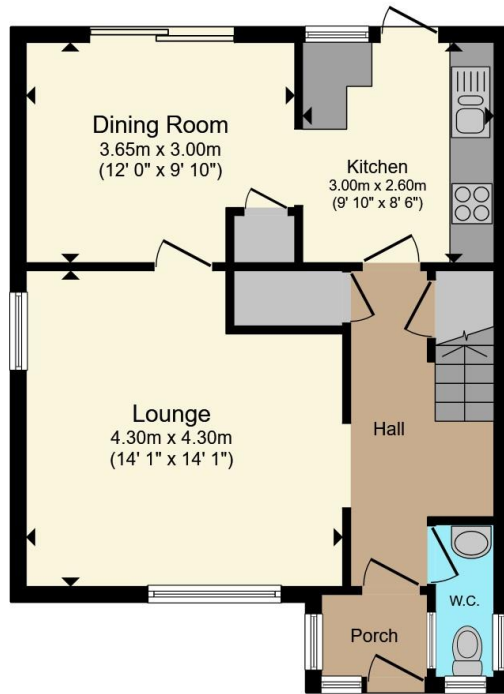
Open plan laid to lawn

Rear Garden

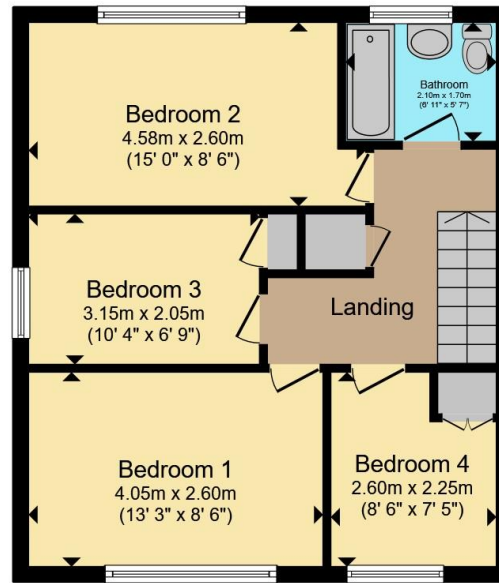
Corner plot, double gates to off-street parking, gate for side access.

End of terrace with room to the side for a double storey extension STPP





Ground Floor



First Floor



Total floor area 96.9 m² (1,043 sq.ft.) approx

This floor plan is for illustrative purposes only. It is not drawn to scale. Any measurements, floor areas (including any total floor area), openings and orientation are approximate. No details are guaranteed, they cannot be relied upon for any purpose and they do not form part of any agreement. No liability is taken for any error, omission or misstatement. A party must rely upon its own inspection(s). Powered by www.propertybox.io



To view this property please contact Connells on

T 01753 810 870
E slough@connells.co.uk

111 High Street
SLOUGH SL1 1DH

check out more properties at connells.co.uk

EPC Rating: Council Tax
Awaited Band: D

Tenure: Freehold



1. MONEY LAUNDERING REGULATIONS Intending purchasers will be asked to produce identification documentation at a later stage and we would ask for your co-operation in order that there will be no delay in agreeing the sale. 2. These particulars do not constitute part or all of an offer or contract. 3. The measurements indicated are supplied for guidance only and as such must be considered incorrect. Potential buyers are advised to recheck measurements before committing to any expense. 4. We have not tested any apparatus, equipment, fixtures, fittings or services and it is in the buyers interest to check the working condition of any appliances.

Connells Residential is registered in England and Wales under company number 1489613, Registered Office is Cumbria House, 16-20 Hockliffe Street, Leighton Buzzard, Bedfordshire, LU7 1GN. VAT Registration Number is 500 2481 05.

See all our properties at www.connells.co.uk | www.rightmove.co.uk | www.zoopla.co.uk

Property Ref: SGH311337 - 0003