



Westbourne Park Villas, London, W2 5EB
£795,000 Share of Freehold





2 x  1 x  1 x 

A beautifully presented two-bedroom flat on the raised ground floor of an imposing stucco-fronted Victorian villa on one of Notting Hill's most charming streets. The elevated position brings in good natural light and a strong sense of privacy, with leafy views from the main windows.

The reception room is centred around a marble fireplace with corncicing, with large windows and a neutral palette throughout with French doors. The kitchen is fitted with integrated appliances and stone-effect worktops. The principal bedroom has built-in mirrored wardrobes, while the second bedroom benefits from French doors — a rare feature at this level. A family bathroom with bath and overhead shower completes the accommodation. Approx. 610 sq ft.

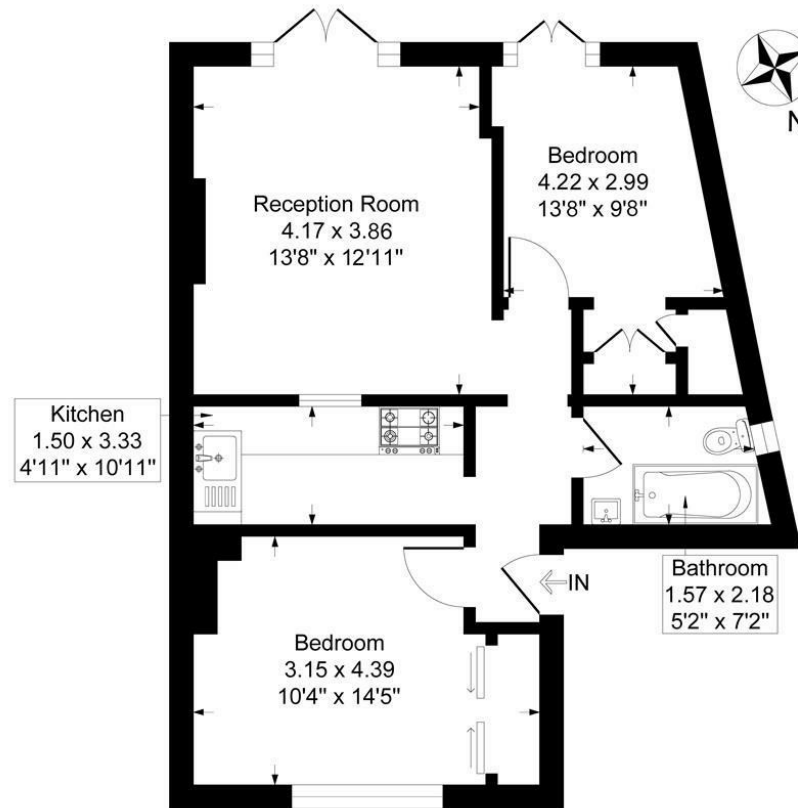
The property further benefits from a secure bike storage at the front of the building.

Westbourne Park Villas sits in the heart of Notting Hill W2, moments from the boutiques, cafés and restaurants of Westbourne Grove and Portobello Road. Westbourne Green open space is just around the corner, and Westbourne Park underground station (Hammersmith & City and Circle lines) provides swift connections into the City and beyond. The area is also within easy reach of Notting Hill Gate (Central, District and Circle lines), Royal Oak (Hammersmith & City Line) and Paddington Station (Bakerloo, Elizabeth Line, Circle and District).



Westbourne Park Villas, London, W2

Approximate Gross Internal Floor Area = 53.6 sq m / 610 sq ft



Raised Ground Floor

Illustration for identification purposes only, measurements are approximate, not to scale.

Important Notice Debussy Property Service Ltd trading as Braithwait for themselves and for the vendor of this property whose agents they are, give notice that (i) these particulars do not constitute any part of an offer or contract, (ii) all statements contained within these particulars are made without responsibility on the part of Braithwait or the vendor, (iii) whilst none in good faith, none of the statements contained within these particulars are to be relied upon as a statement of representation or fact, (iv) any intending purchaser must satisfy him/herself by inspection or otherwise as to the correctness of each of the statements contained within these particulars, (v) the vendor does not make or give either Braithwait or any person within their employment any authority to make or give any representation or warranty whatsoever in relation to this property. Wide angled lenses may be used in photographs.

Call us on 0207 289 8889 or email sales@braithwait.co.uk

